

Opener Solutions for Garage Doors

Version en_2024_02

Valid from 2024-07-15





Feedback is welcome: Write us an e-mail!

If you discover an error, we would be pleased to receive your feedback! We are also happy to receive general suggestions for improvement – for example, regarding the structure. We created the product manuals for you and want you to be able to work with them as much as possible.

Feel free to send your comments, remarks or suggestions for changes to the following mailbox:
produkthandbuch@marantec.com

Thank you for your support!

Image credits:

Teckentrup GmbH & Co. KG, FLEMA sprl, vadim_orlov-stock.adobe.com, O.Fischer-stock.adobe.com, Meier Systems AG, RS Torsysteme GmbH & Co. KG, BEA s.a.

Why Marantec? Because quality comes from experience.

**A family business on
the way to the future**



Experience and innovation



Garage door openers are not only our business, they are our passion. Since 1989, the Marantec Group has been producing garage door openers at its headquarters in East Westphalia. Our goal: to produce the best opener solutions so that you can offer your customers real added value. This requires experience and new ideas. We put our energy into opener and control systems as well as accessory products for all types of garage doors and develop total solutions for the future.

Safety and convenience



We develop patented technologies for maximum safety and convenience. Our company is certified according to DIN ISO 9001.

Nice products



Each of our products shows that technology can be not only functional but also beautiful.

Everywhere



We sell our products in 70 countries around the world. As a family-owned company through and through, our partnerships with our professional customers and from there to our users are of the utmost importance to us. We respond to wishes and requirements, are flexible, fast and reliable.

Top Innovator 2021



Innovation is our everyday life - awards are our joy. Since our founding, experience and innovation have shaped our actions. In 2021 we were awarded honors as a top innovator in the field of electronics/electrical engineering.



Table of contents

Garage door openers

Comfort 260, 270, 280	8
Comfort 260, 270 speed	12
Comfort 260 accu	16
Comfort 360, 370, 380	20
	24

Underground Garage Door Openers

Comfort 390, Comfort 390 plus	28
Comfort 390	30
Comfort 390 plus	32
Comfort 390, Comfort 390 plus	33
	34

SZ Opener rails

Accessories for Opener Rails	36
	41

Safety Systems and Sensors

Light Grids	44
Accessories for Light Grids	46
Closing Edge Safety Devices	48
Wicket Door Contacts	50
Closing Edge Safety Devices	68
Light Barriers	69
Pull-in Safety Devices	70
Sensors	76
License Plate Recognition Systems	78
Accessories for License Plate Recognition Systems	84
	86

Radio Accessories for bi.linked

bi.linked Hand Transmitter	88
Accessories for Hand Transmitters	90
bi.linked Push Button	94
bi.linked Code Switch	95
bi.linked universal station	96
bi.linked Module Receiver	98
bi.linked Universal Receiver	99
	100

Radio Accessories for Multi-Bit

Multi-Bit Hand Transmitter	106
Accessories for Hand Transmitters	108
Multi-Bit Push Button	114
Multi-Bit Code Push Button	116
Multi-Bit Universal Transmitter	118
Multi-Bit Module Antennas	120
Multi-Bit Universal Receiver	121
	123



Radio Accessories for DM7S

DM7S hand transmitter	130
DM7S Universal Receivers	132
DM7S Programmers	134
Accessories for DM7S Programmers	136
	137



Electrical Accessories

Main Switches	138
Programming Devices	140
Push button	141
Ceiling Pull Switches	143
Key Switches	145
Transponder Systems	146
Timers	149
Traffic Lights	152
Signal lights	153
Opener Lightings	156
Garage Lightings	157
Electric Locks	158
Expansion Modules	160
Power Supplies for Expansion Modules	161
Accessories for Expansion Modules	170
Batteries	171
	172



Mechanical Accessories

Interlocks	176
Emergency Operations	178
	179

Garage door openers





Comfort 260, 270, 280



Comfort 260, 270 speed



Comfort 260 accu



Comfort 360, 370, 380



You want your own labeling on our garage door openers?

Almost all of the following products are also available on request as a neutral variant or with your very own labeling.

Technical data

	Comfort 260	Comfort 270	Comfort 280	Comfort 260 speed	Comfort 270 speed	Comfort 260 accu
Width overhead doors (max.) [m]	3.5	5	6	3.5	5	3.5
Width of tipping and canopy gates (max.) [m]	3.5	5	6	3.5	5	3.5
Height of tilt and canopy gates (max.) [m]	2.25					
Width of single-wall sectional doors (max.) [m]	5	5.5	6	5	5.5	5
Width of double-walled sectional doors (max.) [m]	3	5.5	6	3	5.5	3
Gate weight (max.) [kg]	90	165	200	110	185	90
Push and pull force (max.) [N]	550	750	1,000	650	850	550
Running speed (max.) [cm/s]	16			22	23.5	16
Cycles per hour (max.)*	2	4	6	3	4	2
Cycles per day (max.)	16	28	48	20	32	16
Operating voltage [V]	230 V/1~					24 V-DC
Nominal frequency [Hz]	50/60					
Rated current [A]	1.1					
Power consumption [VA/W/kW]	0.25 kW					0.12 kW
Power consumption in standby [VA/W/kW]	4 W					0.1 W
Motor voltage [V]	24 V-DC					
Control voltage [V]	24 V-DC					
Protection class	II					
Protection class	IP20					
Illuminant	8 LED module					
Continuous sound pressure level (max.) [dB(A)]	70					
Temperature (min./max.) [°C]	-20/60					
Dimensions (WxHxD) [mm]	190x125x360					
Weight [kg]	3.2	3.5	3.8		4.4	3.2

* One cycle corresponds to two travels (opening and closing) of the gate.

Technical data

	Comfort 360	Comfort 370	Comfort 380	Comfort 390	Comfort 390 plus
Width overhead doors (max.) [m]	3.5	5	6		
Width of tipping and canopy gates (max.) [m]	3.5	5	6		
Height of tilt and canopy gates (max.) [m]	2.25				
Width of single-wall sectional doors (max.) [m]	5	5.5	6		
Width of double-walled sectional doors (max.) [m]	3	5.5	6		
Gate weight (max.) [kg]	110	185	220	240	
Push and pull force (max.) [N]	650	850	1,100	1,200	
Running speed (max.) [cm/s]	22	23.5	18	16	
Cycles per hour (max.)*	2	4	6	18	
Cycles per day (max.)	20	32	60	300	
Operating voltage [V]	230 V/1~				
Nominal frequency [Hz]	50/60				
Rated current [A]	1.1				
Power consumption [VA/W/kW]	0.25 kW				
Power consumption in standby [VA/W/kW]	0.6 W			3.5 W	
Motor voltage [V]	24 V-DC				
Control voltage [V]	24 V-DC				
Protection class	II				
Protection class	IP20				
Illuminant	2x 10 LED module			Without	
Continuous sound pressure level (max.) [dB(A)]	70				
Temperature (min./max.) [°C]	-20/60				
Dimensions (WxHxD) [mm]	360x135x335				
Weight [kg]	4.3	4.9		5	

* One cycle corresponds to two travels (opening and closing) of the gate.

Comfort 260, 270, 280





Article

Item no.	Description	Price
183501	Comfort 260 Set for garage doors up to 90 kg: 24 V-DC motor, 550 N, 16 cm/s	229.00 €
183502	Comfort 270 Set for garage doors up to 165 kg: 24 V-DC motor, 750 N, 16 cm/s	260.00 €
183503	Comfort 280 Set for garage doors up to 200 kg: 24 V-DC motor, 1.000 N, 16 cm/s	305.00 €

Scope of delivery

- Motor-Aggregat mit integrierter Steuerung
- Digital 921 Modulempfänger, 868 MHz bi.linked
- Digital 572 Micro-Handsender 2-Kanal, 868 MHz bi.linked
- Universal-Einbauset für Schwing- und Sektionaltore
- Netzkabel mit Eurostecker Typ C, 1.500 mm

Features

Opener

- Compact operator, the length of which can be reduced by 143 mm when rotated 90°
- DC motor: soft start and stop are gentle on the door, separately adjustable opening and closing speeds enable fast opening and standard-compliant closing
- Integrated control with illuminated LC display and easy programming
- Connections for push button, light barrier, wicket door contact, battery backup and expansion boards for retrofitting additional functions

Structure and connection

- Connection (conventional) for push button, light barrier and holding circuit
- Connection (MS-Bus) for expansion boards (boards can be integrated)
- Connection (MS bus) for handheld programmer and expansion modules
- Connection for battery backup
- Output 24 V-DC, max. 50 mA

Operation

- Marantec EOS programming
- Programming and status message via LC display
- Programming and diagnostics possible via optional external handheld programmer
- Programming and diagnostics possible via maveo pro by smartphone app

End position setting

- Electronic limit stop

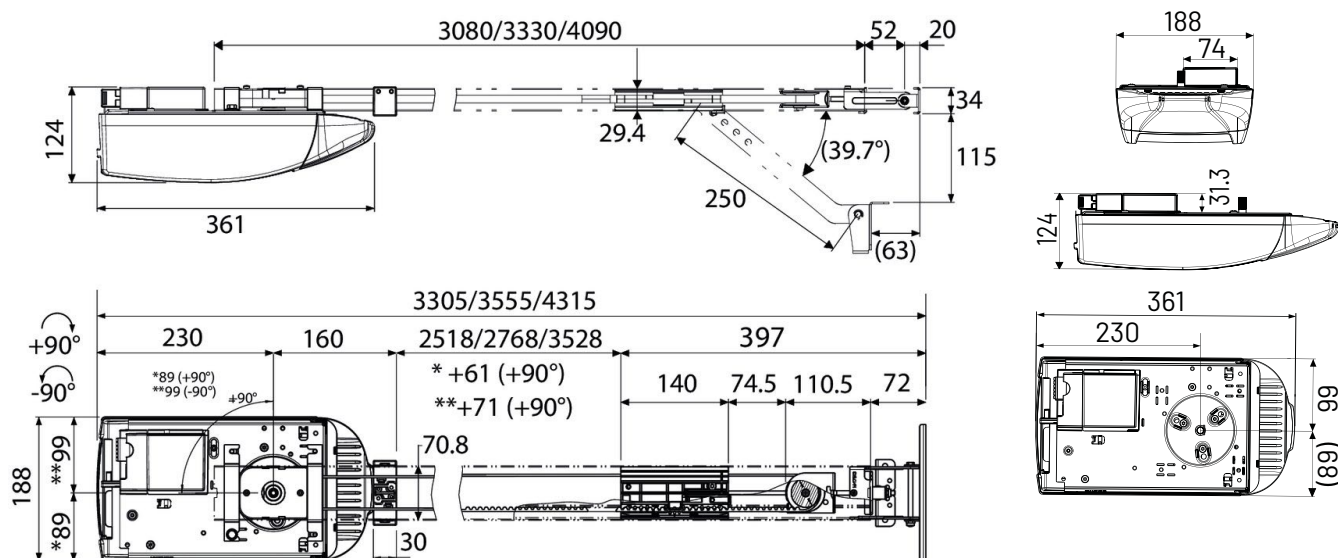
Functions

- Power-saving technology
- Soft start/soft stop/soft run
- Electronic anti-deferral device
- Blocking protection
- Runtime limit
- Reversal of direction of rotation programmable
- Backjump (relief of the closing edge)
- Automatic feed function (can only be used in conjunction with a light barrier)
- Intermediate position OPEN and CLOSED separately programmable
- Gate travel speed OPEN and CLOSE separately programmable
- Soft run position OPEN and CLOSE separately programmable
- Soft run speed OPEN and CLOSE separately programmable
- Frame function (blanking of frame light barriers)
- Programmable impulse input and output
- Cycle counter
- Maintenance interval programmable
- Error signaling with error memory
- Multi-level reset function (control, safety, radio, etc.)

Technical data

	Comfort 260	Comfort 270	Comfort 280
Push and pull force (max.) [N]	550	750	1,000
Running speed (max.) [cm/s]	16		
Cycles per hour (max.)*	2	4	6
Cycles per day (max.)	16	28	48
Operating voltage [V]	230 V/1~		
Illuminant	8 LED module		

Technical drawings



Area of use

	Comfort 260	Comfort 270	Comfort 280
Width overhead doors (max.) [m]	3.5	5	6
Width of tipping and canopy gates (max.) [m]	3.5	5	6
Height of tilt and canopy gates (max.) [m]	2.25	2.25	2.25
Width of single-wall sectional doors (max.) [m]	5	5.5	6
Width of double-walled sectional doors (max.) [m]	3	5.5	6
Gate weight (max.) [kg]	90	165	200

Operator specific accessories



SZ 11

Opener rail for garage door openers, 3.08 m profile length, 0.8 mm thickness, toothed belt, 1-piece

177207
131.00 €



Digital 572

2-channel micro hand transmitter, unidirectional, 868 MHz bi.linked

101115
54.00 €

Comfort 260, 270 speed





Article

Item no.	Description	Price
183442	Comfort 260 speed Set for garage doors up to 110 kg: 24 V-DC motor, 650 N, 22 cm/s	279.00 €
183444	Comfort 270 speed Set for garage doors up to 185 kg: 24 V-DC motor, 850 N, 23.5 cm/s	314.00 €

Scope of delivery

- Motor unit with integrated control
- Digital 921 Module receiver, 868 MHz bi.linked
- 2 Digital 572 Micro hand transmitters 2-channel, 868 MHz bi.linked
- Universal installation set for up-and-over and sectional doors
- Mains cable with Euro plug type C, 1,500 mm

Features

Opener

- Compact operator, the length of which can be reduced by 143 mm when rotated 90°
- DC motor: soft start and stop are gentle on the door, separately adjustable opening and closing speeds enable fast opening and standard-compliant closing
- Integrated control with illuminated LC display and easy programming
- Connections for push button, light barrier, wicket door contact, battery backup and expansion boards for retrofitting additional functions

Structure and connection

- Connection (conventional) for push button, light barrier and holding circuit
- Connection (MS-Bus) for expansion boards (boards can be integrated)
- Connection (MS bus) for handheld programmer and expansion modules
- Connection for battery backup
- Output 24 V-DC, max. 50 mA

Operation

- Marantec EOS programming
- Programming and status message via LC display
- Programming and diagnostics possible via optional external handheld programmer
- Programming and diagnostics possible via maveo pro by smartphone app

End position setting

- Electronic limit stop

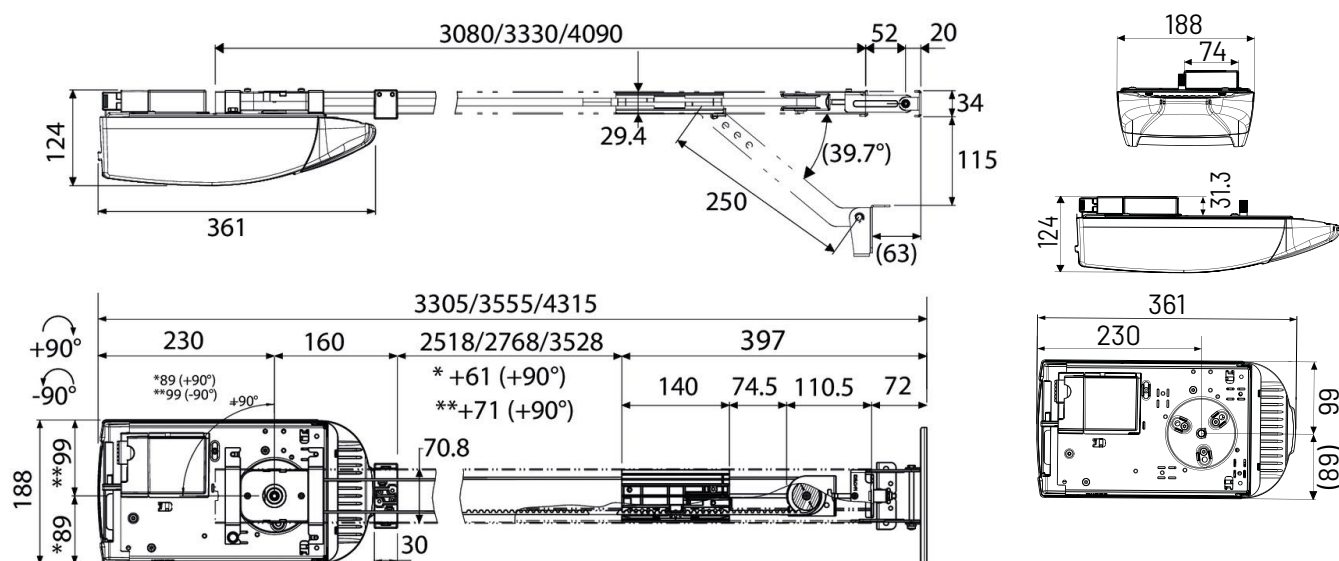
Functions

- Power-saving technology
- Soft start/soft stop/soft run
- Electronic anti-deferral device
- Blocking protection
- Runtime limit
- Reversal of direction of rotation programmable
- Backjump (relief of the closing edge)
- Automatic feed function (can only be used in conjunction with a light barrier)
- Intermediate position OPEN and CLOSED separately programmable
- Gate travel speed OPEN and CLOSE separately programmable
- Soft run position OPEN and CLOSE separately programmable
- Soft run speed OPEN and CLOSE separately programmable
- Frame function (blanking of frame light barriers)
- Programmable impulse input and output
- Cycle counter
- Maintenance interval programmable
- Error signaling with error memory
- Multi-level reset function (control, safety, radio, etc.)

Technical data

	Comfort 260 speed	Comfort 270 speed
Push and pull force (max.) [N]	650	850
Running speed (max.) [cm/s]	22	23.5
Cycles per hour (max.)*	3	4
Cycles per day (max.)	20	32
Operating voltage [V]	230 V/1~	
Illuminant	8 LED module	

Technical drawings



Area of use

	Comfort 260 speed	Comfort 270 speed
Width overhead doors (max.) [m]	3.5	5
Width of tipping and canopy gates (max.) [m]	3.5	5
Height of tilt and canopy gates (max.) [m]	2.25	2.25
Width of single-wall sectional doors (max.) [m]	5	5.5
Width of double-walled sectional doors (max.) [m]	3	5.5
Gate weight (max.) [kg]	110	185

Operator specific accessories



SZ 11

Opener rail for garage door openers, 3.08 m profile length, 0.8 mm thickness, toothed belt, 1-piece

177207
131.00 €



Digital 572

2-channel micro hand transmitter, unidirectional, 868 MHz bi.linked

101115
54.00 €

Comfort 260 accu





Article

Item no.	Description	Price
184076	Comfort 260 accu Set for garage doors up to 90 kg: 24 V-DC motor, 550 N, 16 cm/s	516.00 €

Scope of delivery

- Motor unit with integrated control, pre-wired, 5.000 mm
- Accu 700 battery unit with charge controller
- Charger with Euro plug type C
- Digital 921 Module receiver, 868 MHz bi.linked
- Digital 572 Micro hand transmitter 2-channel, 868 MHz bi.linked
- Universal installation set for up-and-over and sectional doors

Features

Opener

- Compact operator, the length of which can be reduced by 143 mm when rotated 90°
- DC motor: soft start and stop are gentle on the door, separately adjustable opening and closing speeds enable fast opening and standard-compliant closing
- Integrated control with illuminated LC display and easy programming
- Connections for push button, light barrier, wicket door contact, battery backup and expansion boards for retrofitting additional functions

Structure and connection

- Connection (conventional) for push button, light barrier and holding circuit
- Connection (MS-Bus) for expansion boards (boards can be integrated)
- Connection (MS bus) for handheld programmer and expansion modules
- Connection for battery backup
- Output 24 V-DC, max. 50 mA

Operation

- Marantec EOS programming
- Programming and status message via LC display
- Programming and diagnostics possible via optional external handheld programmer
- Programming and diagnostics possible via maveo pro by smartphone app

End position setting

- Electronic limit stop

Functions

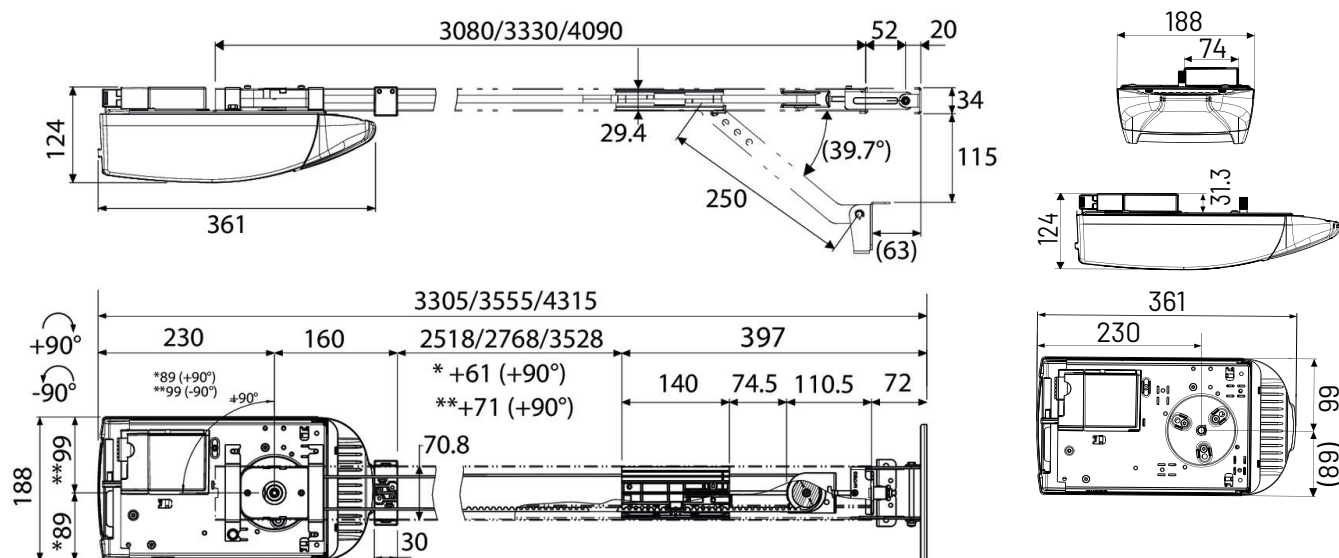
- Power-saving technology
- Soft start/soft stop/soft run
- Electronic anti-deferral device
- Blocking protection
- Runtime limit
- Reversal of direction of rotation programmable
- Backjump (relief of the closing edge)
- Automatic feed function (can only be used in conjunction with a light barrier)
- Intermediate position OPEN and CLOSED separately programmable
- Gate travel speed OPEN and CLOSE separately programmable
- Soft run position OPEN and CLOSE separately programmable
- Soft run speed OPEN and CLOSE separately programmable
- Frame function (blanking of frame light barriers)
- Programmable impulse input and output
- Cycle counter
- Maintenance interval programmable
- Error signaling with error memory
- Multi-level reset function (control, safety, radio, etc.)

Technical data

	Comfort 260 accu
Push and pull force (max.) [N]	550
Running speed (max.) [cm/s]	16
Cycles per hour (max.)*	2
Cycles per day (max.)	16
Operating voltage [V]	24 V-DC
Illuminant	8 LED module

* One cycle corresponds to two travels (opening and closing) of the gate.

Technical drawings



Area of use

	Comfort 260 accu
Width overhead doors (max.) [m]	3.5
Width of tipping and canopy gates (max.) [m]	3.5
Height of tilt and canopy gates (max.) [m]	2.25
Width of single-wall sectional doors (max.) [m]	5
Width of double-walled sectional doors (max.) [m]	3
Gate weight (max.) [kg]	90

Operator specific accessories



SZ 11

Opener rail for garage door openers, 3.08 m profile length, 0.8 mm thickness, toothed belt, 1-piece

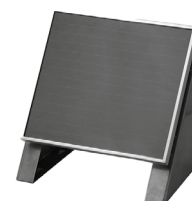
177207
131.00 €



Accu 700

Battery unit 7.2 Ah as exchangeable battery in IP20 housing

87785
291.00 €



Retrofit kit solar panel

with installation brackets and 7.5 m cable for Accu 700

83252
332.00 €

Comfort 360, 370, 380





Article

Item no.	Description	Price
183504	Comfort 360 Set for garage doors up to 110 kg: 24 V-DC motor, 650 N, 22 cm/s	295.00 €
183505	Comfort 370 Set for garage doors up to 185 kg: 24 V-DC motor, 850 N, 23.5 cm/s	330.00 €
183506	Comfort 380 Set for garage doors up to 220 kg: 24 V-DC motor, 1,100 N, 18 cm/s	399.00 €

Scope of delivery

- Motor unit with integrated control
- Digital 921 Module receiver, 868 MHz bi.linked
- Digital 564 Mini hand transmitter 4-channel, 868 MHz bi.linked
- Digital 572 Micro hand transmitter 2-channel, 868 MHz bi.linked
- Universal installation set for up-and-over and sectional doors
- Power cable with Euro plug type C, 1,500 mm

Features

Opener

- DC motor: soft start and stop are gentle on the door, separately adjustable opening and closing speeds enable fast opening and standard-compliant closing
- Integrated control with illuminated LC display and easy programming
- Connections for push button, light barrier, wicket door contact, battery backup and expansion boards for retrofitting additional functions
- 2-sides and to the sides radiating LED illumination
- Fast and powerful
- Battery backup can be integrated in the housing

Structure and connection

- Connection (conventional) for push button, light barrier and holding circuit
- Connection (MS-Bus) for expansion boards (boards can be integrated)
- Connection (MS bus) for handheld programmer and expansion modules
- Connection for battery backup
- Output 24 V-DC, max. 50 mA

Operation

- Marantec EOS programming
- Programming and status message via LC display
- Programming and diagnostics possible via optional external handheld programmer
- Programming and diagnostics possible via maveo pro by smartphone app

End position setting

- Electronic limit stop

Functions

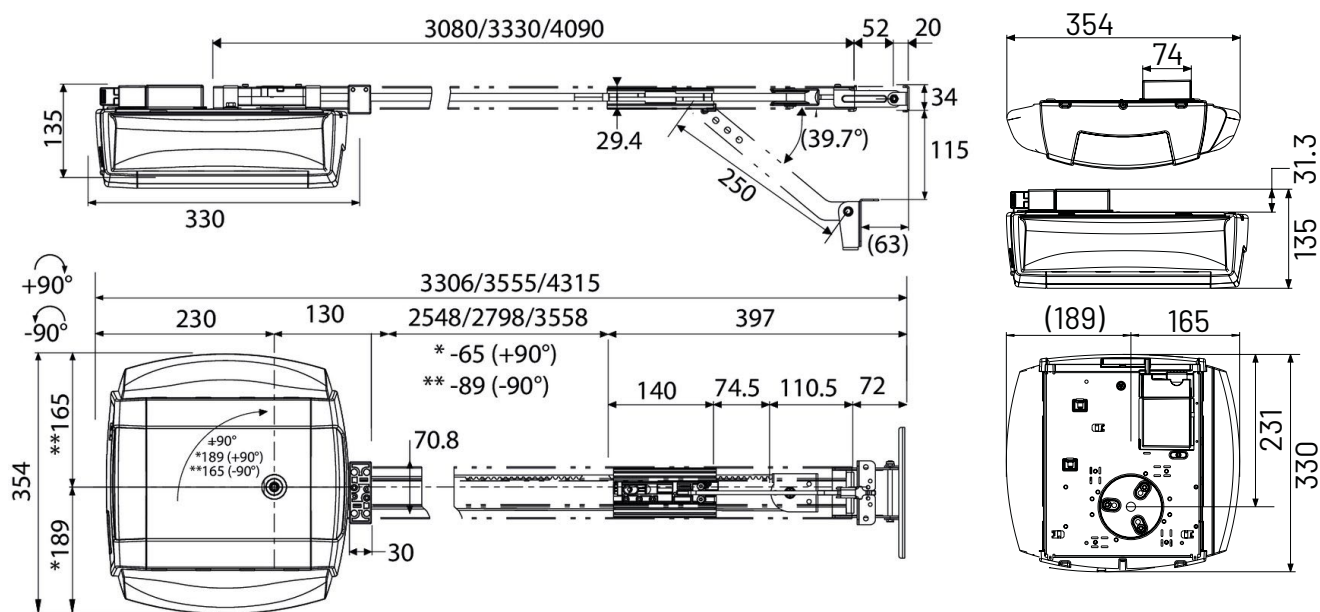
- Power saving technology blueline
- Soft start/soft stop/soft run
- Electronic anti-deferral device
- Blocking protection
- Runtime limit
- Reversal of direction of rotation programmable
- Backjump (relief of the closing edge)
- Automatic feed function (can only be used in conjunction with a light barrier)
- Intermediate position OPEN and CLOSED separately programmable
- Gate travel speed OPEN and CLOSE separately programmable
- Soft run position OPEN and CLOSE separately programmable
- Soft run speed OPEN and CLOSE separately programmable
- Frame function (blanking of frame light barriers)
- Programmable impulse input and output
- Cycle counter
- Maintenance interval programmable
- Error signaling with error memory
- Multi-level reset function (control, safety, radio, etc.)

Technical data

	Comfort 360	Comfort 370	Comfort 380
Push and pull force (max.) [N]	650	850	1,100
Running speed (max.) [cm/s]	22	23.5	18
Cycles per hour (max.)*	2	4	6
Cycles per day (max.)	20	32	60
Operating voltage [V]	230 V/1~		
Illuminant	2x 10 LED module		

* One cycle corresponds to two travels (opening and closing) of the gate.

Technical drawings



Area of use

	Comfort 360	Comfort 370	Comfort 380
Width overhead doors (max.) [m]	3.5	5	6
Width of tipping and canopy gates (max.) [m]	3.5	5	6
Height of tilt and canopy gates (max.) [m]	2.25	2.25	2.25
Width of single-wall sectional doors (max.) [m]	5	5.5	6
Width of double-walled sectional doors (max.) [m]	3	5.5	6
Gate weight (max.) [kg]	110	185	220

Operator specific accessories



SZ 11

Opener rail for garage door openers, 3.08 m profile length, 0.8 mm thickness, toothed belt, 1-piece

177207
131.00 €



Digital 564

4-channel mini hand transmitter, unidirectional, 868 MHz bi.linked

101106
59.00 €



Digital 572

2-channel micro hand transmitter, unidirectional, 868 MHz bi.linked

101115
54.00 €

Underground Garage Door Openers





Comfort 390



Comfort 390 plus

Comfort 390, Comfort 390 plus





Comfort 390



Comfort 390 plus

Article

Item no.	Description	Price
167474	Comfort 390 Set for garage doors up to 240 kg: 24 V-DC motor, 1.200 N, 16 cm/s	405.00 €
167477	Comfort 390 plus Set for garage doors up to 240 kg: 24 V-DC motor, 1.200 N, 16 cm/s	776.00 €

Scope of delivery

Comfort 390

- Motor unit with integrated control
- Universal installation set for up-and-over and sectional doors
- Mains cable with Euro plug type C, 1,500 mm

Comfort 390 plus

- Motor unit with integrated control
- External connection housing with 2 relays, track control and 24 V-DC switching power supply unit
- Universal installation set for up-and-over and sectional doors
- MS-Bus connection cable, 9,500 mm
- Mains connection cable, 9,500 mm
- Mains connection cable with Schuko plug type F, 1,200 mm

Comfort 390 Features

Opener

- Connections for push button, light barrier, wicket door contact, battery backup and expansion boards for retrofitting additional functions
- Entry solution for collective garages with simple connection options
- DC motor: soft start and stop are gentle on the door, separately adjustable opening and closing speeds enable fast opening and standard-compliant closing
- Integrated control with illuminated LC display and easy programming
- Powerful DC gearmotor with high self-locking for gates up to 6.0 m wide and 240 kg weight
- Battery backup can be integrated in the housing

Structure and connection

- Connection (MS-Bus) for expansion boards (boards can be integrated)
- Output 24 V-DC, max. 50 mA
- Connection (conventional) for push button, light barrier and holding circuit
- Connection (MS bus) for handheld programmer and expansion modules
- Connection for battery backup

Operation

- Marantec EOS programming
- Programming and status message via LC display
- Programming and diagnostics possible via optional external handheld programmer
- Programming and diagnostics possible via maveo pro by smartphone app

End position setting

- Electronic limit stop

Functions

- Power-saving technology
- Soft start/soft stop/soft run
- Electronic anti-deferral device
- Blocking protection
- Runtime limit
- Reversal of direction of rotation programmable
- Backjump (relief of the closing edge)
- Automatic feed function (can only be used in conjunction with a light barrier)
- Intermediate position OPEN and CLOSED separately programmable
- Gate travel speed OPEN and CLOSE separately programmable
- Soft run position OPEN and CLOSE separately programmable
- Soft run speed OPEN and CLOSE separately programmable
- Frame function (blanking of frame light barriers)
- Programmable impulse input and output
- Cycle counter
- Maintenance interval programmable
- Error signaling with error memory
- Multi-level reset function (control, safety, radio, etc.)

Technical data

	Comfort 390
Push and pull force (max.) [N]	1,200
Running speed (max.) [cm/s]	16
Cycles per hour (max.)*	18
Cycles per day (max.)	300
Operating voltage [V]	230 V/1~
Illuminant	Without

* One cycle corresponds to two travels (opening and closing) of the gate.

Comfort 390 plus Features

Opener

- External connection housing with connections for wicket door, closing edge safety device, lighting, signal lights, lane control and with relay
- Operating keys and emergency stop push button integrated in housing cover
- Top-hat rail with pre-mounted power supply unit
- Supply of accessories with 230 V-AC/6 A and 24 V-DC/2.5 A
- DC motor: soft start and stop are gentle on the door, separately adjustable opening and closing speeds enable fast opening and standard-compliant closing
- Integrated control with illuminated LC display and easy programming
- Powerful DC gearmotor with high self-locking for gates up to 6.0 m wide and 240 kg weight
- Battery backup can be integrated in the housing

Structure and connection

- Connection (conventional) for 8.2 kOhm contact strip or OSE opto-sensors
- Connection (conventional) for signal light 230 V-AC
- 2 programmable relay contacts for e.g. end position messages
- 2 inputs for push buttons and 4 relay contacts for traffic lights for two-way traffic control
- 2 inputs for push buttons and 2 relay contacts for signal lights for special functions for two-way traffic control
- Switching power supply 24 V-DC max. 2.5 A with 2 outputs
- Connection (conventional) for push button, light barrier and holding circuit
- Connection (MS bus) for handheld programmer and expansion modules
- Connection for battery backup

Operation

- Marantec EOS programming
- Programming and status message via LC display
- Programming and diagnostics possible via optional external handheld programmer
- Programming and diagnostics possible via maveo pro by smartphone app

End position setting

- Electronic limit stop

Functions

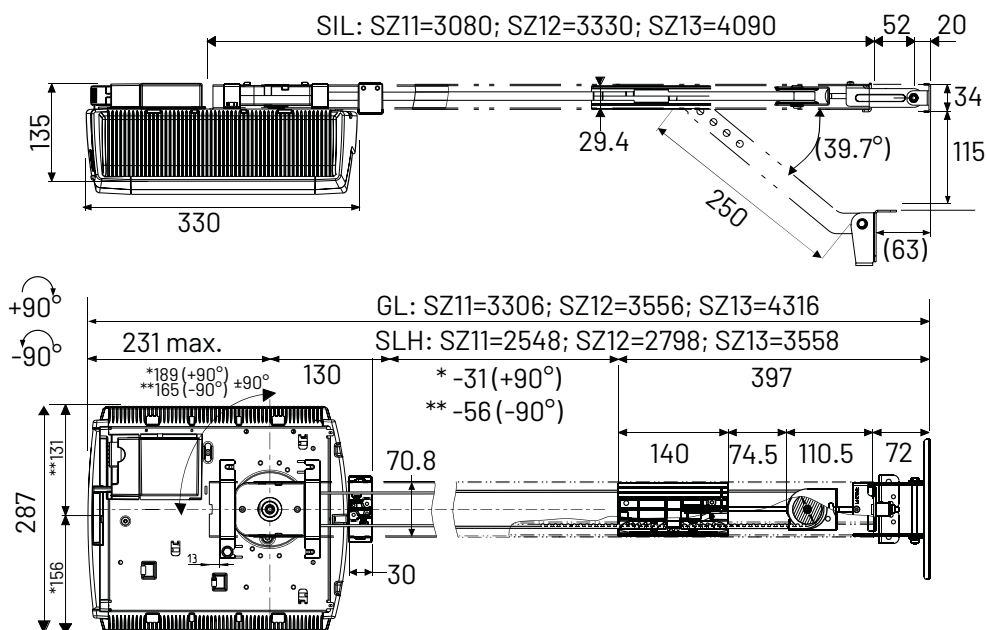
- Power-saving technology
- Soft start/soft stop/soft run
- Electronic anti-deferral device
- Blocking protection
- Runtime limit
- Reversal of direction of rotation programmable
- Backjump (relief of the closing edge)
- Automatic feed function (can only be used in conjunction with a light barrier)
- Intermediate position OPEN and CLOSED separately programmable
- Gate travel speed OPEN and CLOSE separately programmable
- Soft run position OPEN and CLOSE separately programmable
- Soft run speed OPEN and CLOSE separately programmable
- Frame function (blanking of frame light barriers)
- Programmable impulse input and output
- Cycle counter
- Maintenance interval programmable
- Error signaling with error memory
- Multi-level reset function (control, safety, radio, etc.)

Technical data

	Comfort 390 plus
Push and pull force (max.) [N]	1,200
Running speed (max.) [cm/s]	16
Cycles per hour (max.)*	18
Cycles per day (max.)	300
Operating voltage [V]	230 V/1~
Illuminant	Without

Technical drawings

Comfort 390



Area of use

	Comfort 390	Comfort 390 plus
Width overhead doors (max.) [m]	6	6
Width of tipping and canopy gates (max.) [m]	6	6
Height of tilt and canopy gates (max.) [m]	2.25	2.25
Width of single-wall sectional doors (max.) [m]	6	6
Width of double-walled sectional doors (max.) [m]	6	6
Gate weight (max.) [kg]	240	240

Operator specific accessories



SZ 11

Opener rail for garage door openers, 3.08 m profile length, 1.2 mm thickness, ball bearing, toothed belt, 1-piece

177213
159.00 €



MSC-APZ 1-2T/1

Key switch for surface installation, 2-sided momentary contact, metal housing, IP54, 3 keys

184190
54.00 €



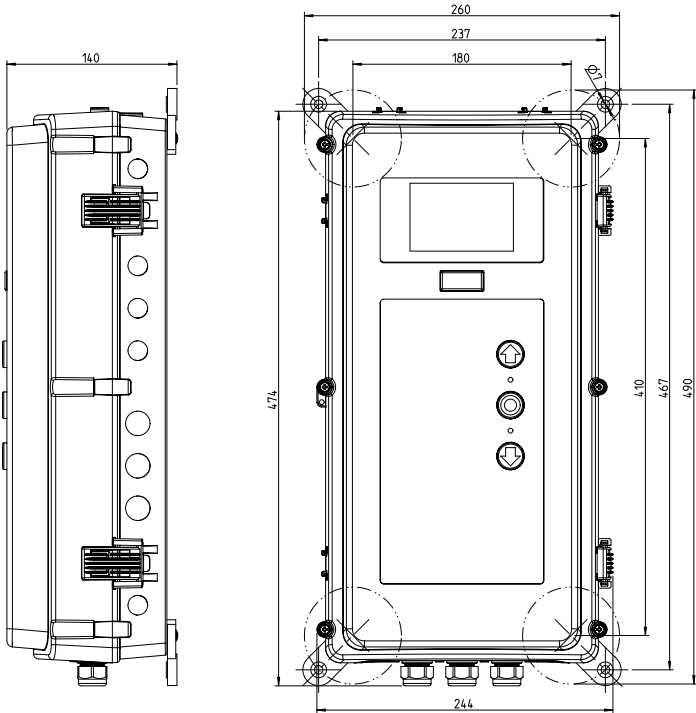
Ceiling pull switch

with slow action and 3.5 m pull rope

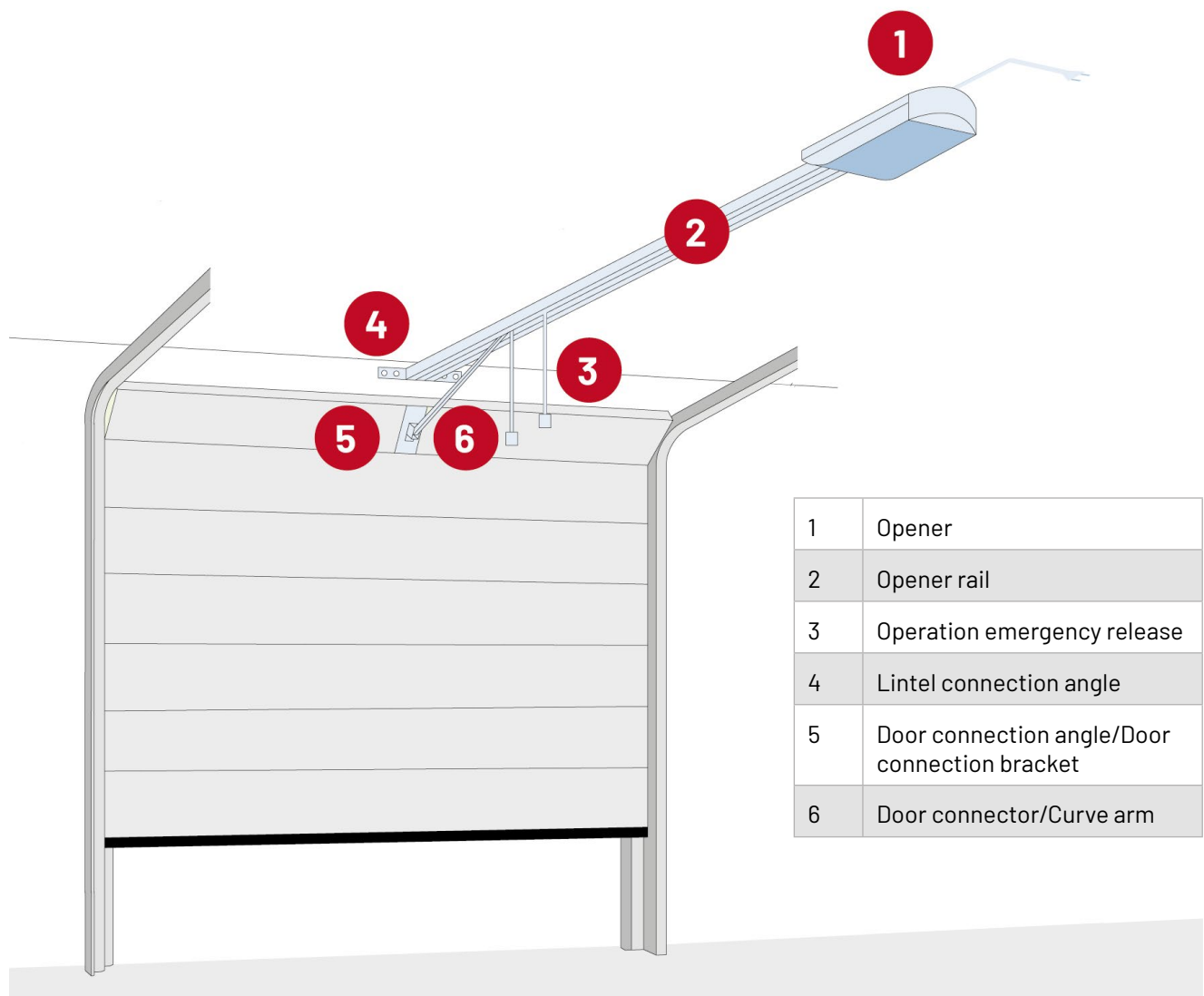
151050
80.00 €

Technical drawings

Comfort 390 plus



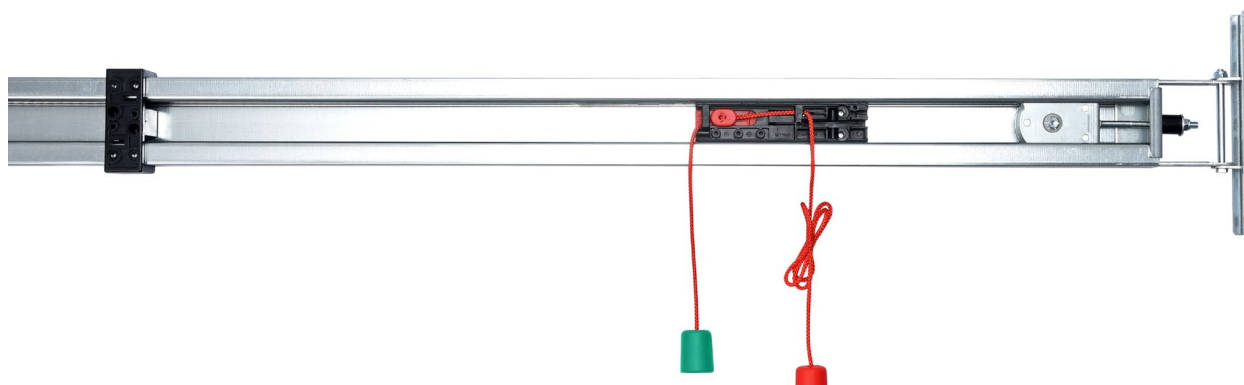
SZ Opener Rails



Order opener rail in special length

1. Determine profile length	
Overhead door	Door height + 580 mm
Sectional door with normal fitting	Door height + 830 mm
Sectional door with low lintel fitting	Door height + 955 mm
Sectional door with tension springs	Door height + 955 mm
2. Transmit order data	
Profile thickness	0.8 mm/1.2 mm
Division	1-piece/2-piece
Determined profile length	XXXX mm

SZ Opener Rails



Article

Item no.	Description	Price
177207	SZ 11 Opener rail for garage door openers, 3.08 m profile length, 0.8 mm thickness, toothed belt, 1-piece	131.00 €
177209	SZ 12 Opener rail for garage door openers, 3.33 m profile length, 0.8 mm thickness, toothed belt, 1-piece	178.00 €
177211	SZ 13 Opener rail for garage door openers, 4.09 m profile length, 0.8 mm thickness, toothed belt, 1-piece	224.00 €
	SZ SL Opener rail for garage door openers, profile length according to customer requirements, 0.8 mm thickness, toothed belt, 1-piece	on request

Usage

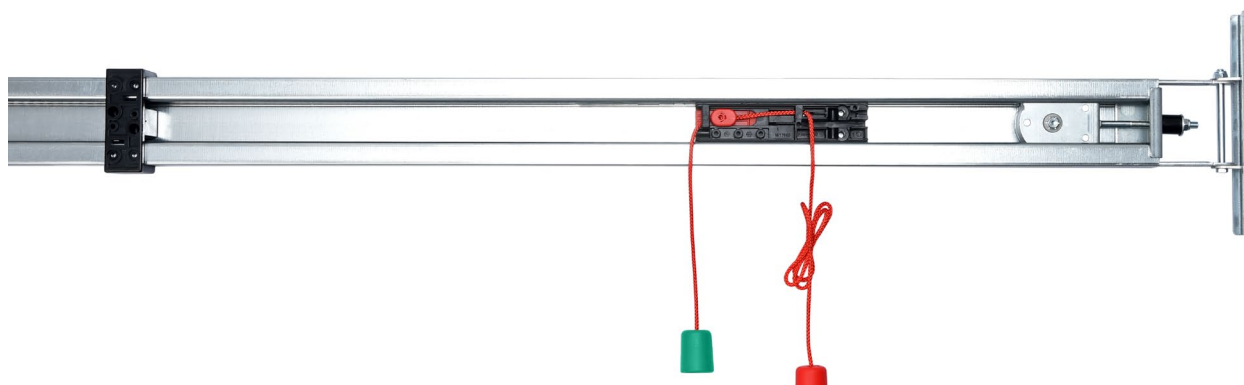
- For Comfort 260 (accu/speed), 270 (speed), 280, 360, 370 and 380

	SZ 11	SZ 12	SZ 13
Height overhead doors (max.) [m]	2.5	2.75	3.5
Height of sectional doors with normal fitting (max.) [m]	2.25	2.5	3.25
Height of sectional doors with low lintel fitting (max.) [m]	2.125	2.375	3.125
Height of sectional doors with tension springs (max.) [m]	2.125	2.375	3.125

Technical data

	SZ 11	SZ 12	SZ 13
Bearing	Plain bearing		
Division	1-piece		
Length [mm]	3,142	3,392	4,152
Profile length [mm]	3,080	3,330	4,090
Movement stroke [mm]	2,518	2,768	3,485
Material thickness [mm]	0.8		
Weight [kg]	5.1	5.4	6.6

SZ Opener Rails



Article

Item no.	Description	Price
177208	SZ 11 Opener rail for garage door openers, 3.08 m profile length, 0.8 mm thickness, toothed belt, 2-piece	131.00 €
177210	SZ 12 Opener rail for garage door openers, 3.33 m profile length, 0.8 mm thickness, toothed belt, 2-piece	178.00 €
177212	SZ 13 Opener rail for garage door openers, 4.09 m profile length, 0.8 mm thickness, toothed belt, 2-piece	224.00 €
	SZ SL Opener rail for garage door openers, profile length according to customer requirements, 0.8 mm thickness, toothed belt, 2-piece	on request

Usage

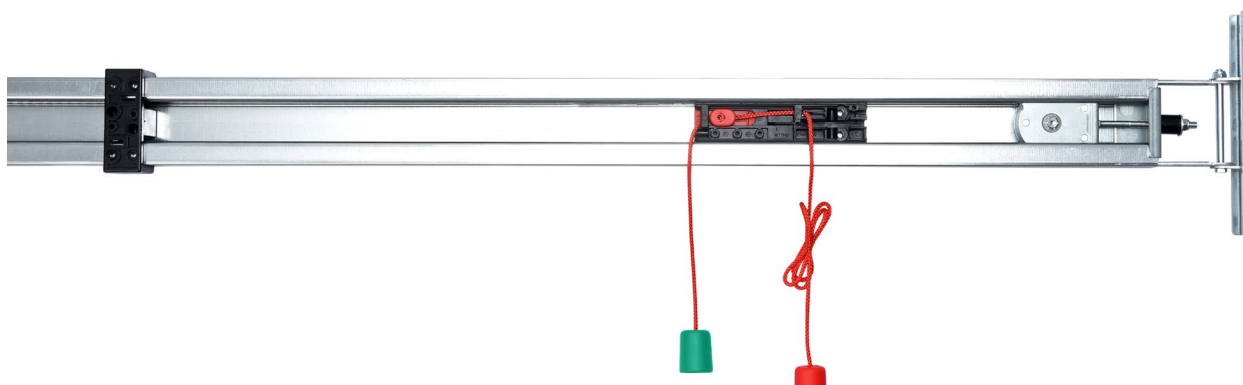
- For Comfort 260 (accu/speed), 270 (speed), 280, 360, 370 and 380

	SZ 11	SZ 12	SZ 13
Height overhead doors (max.) [m]	2.5	2.75	3.5
Height of sectional doors with normal fitting (max.) [m]	2.25	2.5	3.25
Height of sectional doors with low lintel fitting (max.) [m]	2.125	2.375	3.125
Height of sectional doors with tension springs (max.) [m]	2.125	2.375	3.125

Technical data

	SZ 11	SZ 12	SZ 13
Bearing	Plain bearing		
Division	2-piece		
Length [mm]	3,142	3,392	4,152
Profile length [mm]	3,080	3,330	4,090
Movement stroke [mm]	2,475	2,725	3,485
Material thickness [mm]	0.8		
Weight [kg]	5.8	6	7.2

SZ Opener Rails



Article

Item no.	Description	Price
177213	SZ 11 Opener rail for garage door openers, 3.08 m profile length, 1.2 mm thickness, ball bearing, toothed belt, 1-piece	159.00 €
177215	SZ 12 Opener rail for garage door openers, 3.33 m profile length, 1.2 mm thickness, ball bearing, toothed belt, 1-piece	210.00 €
177217	SZ 13 Opener rail for garage door openers, 4.09 m profile length, 1.2 mm thickness, ball bearing, toothed belt, 1-piece	261.00 €
	SZ SL Opener rail for garage door openers, profile length according to customer requirements, 1.2 mm thickness, ball bearing, toothed belt, 1-piece	on request

Usage

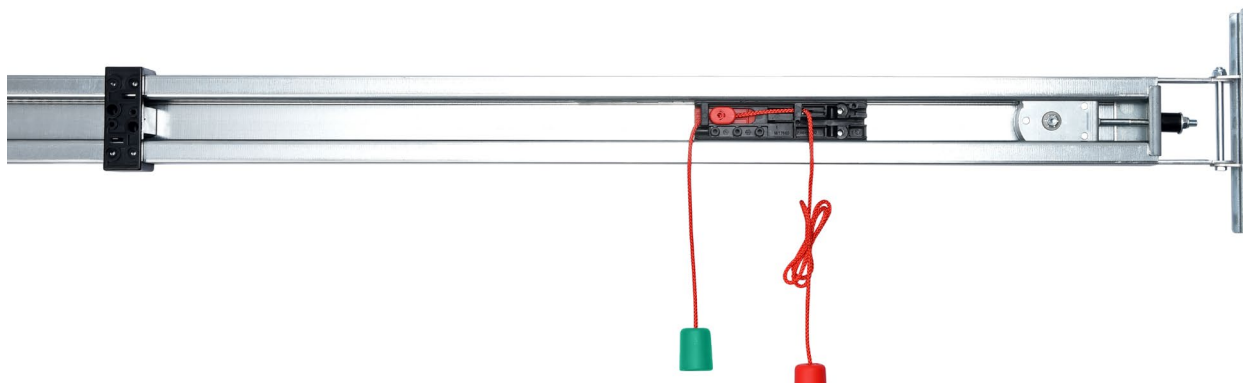
- For Comfort 260 (accu/speed), 270 (speed), 280, 360, 370, 380 and 390 (plus)

	SZ 11	SZ 12	SZ 13
Height overhead doors (max.) [m]	2.5	2.75	3.5
Height of sectional doors with normal fitting (max.) [m]	2.25	2.5	3.25
Height of sectional doors with low lintel fitting (max.) [m]	2.125	2.375	3.125
Height of sectional doors with tension springs (max.) [m]	2.125	2.375	3.125

Technical data

	SZ 11	SZ 12	SZ 13
Bearing	Ball bearing		
Division	1-piece		
Length [mm]	3,142	3,392	4,152
Profile length [mm]	3,080	3,330	4,090
Movement stroke [mm]	2,475	2,725	3,485
Material thickness [mm]	1.2		
Weight [kg]	7.2	7.6	9.2

SZ Opener Rails



Article

Item no.	Description	Price
177214	SZ 11 Opener rail for garage door openers, 3.08 m profile length, 1.2 mm thickness, ball bearing, toothed belt, 2-piece	159.00 €
177216	SZ 12 Opener rail for garage door openers, 3.33 m profile length, 1.2 mm thickness, ball bearing, toothed belt, 2-piece	210.00 €
177218	SZ 13 Opener rail for garage door openers, 4.09 m profile length, 1.2 mm thickness, ball bearing, toothed belt, 2-piece	261.00 €
	SZ SL Opener rail for garage door openers, profile length according to customer requirements, 1.2 mm thickness, ball bearing, toothed belt, 2-piece	on request

Usage

- For Comfort 260 (accu/speed), 270 (speed), 280, 360, 370, 380 and 390 (plus)

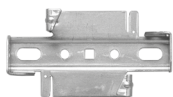
	SZ 11	SZ 12	SZ 13
Height overhead doors (max.) [m]	2.5	2.75	3.5
Height of sectional doors with normal fitting (max.) [m]	2.25	2.5	3.25
Height of sectional doors with low lintel fitting (max.) [m]	2.125	2.375	3.125
Height of sectional doors with tension springs (max.) [m]	2.125	2.375	3.125

Technical data

	SZ 11	SZ 12	SZ 13
Bearing	Ball bearing		
Division	2-piece		
Length [mm]	3,142	3,392	4,152
Profile length [mm]	3,080	3,330	4,090
Movement stroke [mm]	2,475	2,725	3,485
Material thickness [mm]	1.2		
Weight [kg]	7.8	8.2	9.8

Accessories for Opener Rails

Fastening Materials



Suspension clamp set

Additional suspension clips for opener rails with special length, 10 pcs

For opener rails SZ

90870
22.00 €



Cable holder set

Holder for round and flat cable on opener rail, 50 pieces

For opener rails SZ. For round and flat cable

76728
10.00 €



Accessories bag „Old opener rail“

Installation components for opener rails SZ to 03.2020

For Comfort 260 (accu/speed), 270 (speed), 280, 360, 370, 380 and 390 (plus) from 10.2020 in conjunction with SZ operator rails until 03.2020

184839
5.80 €

Fastening Materials



Detolux accessory bag

Connecting elements for Alulux Detolux doors with operator rails SZ as of 04.2020

For operator rails SZ from 04.2020. For Alulux Detolux doors

184568
10.00 €



Cross rail tethering set

Connecting element for fastening the opener rail to the cross rail of the gate, 10 pcs

For opener rails SZ

87577
56.00 €



Extension set crossbar

Extension plates 30-50 mm for cross rail connection, 10 pieces

For cross rail connection

97105
85.00 €

Accessories for Opener Rails

Fasteners



Special 112

Door connection element for sectional doors, 0.37 m, extendable to 0.43 to 0.62 m

For opener rails SZ. For sectional doors

180030
47.00 €



Special 102

Curved door arm for retractable up-and-over doors, 0.86 m

For opener rails SZ. For retractable up-and-over doors

118627
104.00 €



Installation bracket cam valve arm

Installation bracket for curved gate arm, 1.15 m

For Curve gate arm Special 102

119058
28.00 €

Fasteners



Special 103

Hinged gate fitting, 2.6 m

For opener rails SZ. For swing gates

564867
228.00 €



Special 104

Extension for door connector, 0.24 m extension

For opener rails SZ

119478
5.20 €



Special 104

Extension for door connector, 1.06 m extension

For opener rails SZ

150082
49.00 €

Accessories for Opener Rails

Fasteners



Special 104

Extension for door connector, 2.625 m extension

For opener rails SZ

564868
72.00 €

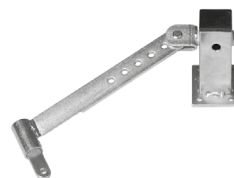


Special 104

Extension for door connector, 3.5 m extension

For opener rails SZ

564871
94.00 €



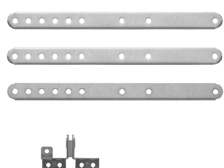
Special 105

Door connection element for side sectional doors, with hinge

For opener rails SZ. For side sectional doors

8055637
124.00 €

Fasteners



Special 106

Door connection element for side sectional doors, multi-adjustable

For opener rails SZ. For side sectional doors

68990
18.00 €

Security Elements



Special 109

Anti-shear device for garage doors as an additional anti-burglary device

For opener rails SZ from 04.2020

182006
20.00 €

Safety Systems and Sensors





Light Grids



Closing Edge Safety Devices



Wicket Door Contacts



Light Barriers



Pull-in Safety Devices



Sensors



License Plate Recognition Systems

Light Grids



Article

Item no.	Description	Price
182309	GridScan/Pro 1.960 Light curtain with 1.96 m protective field height, PNP/NPN/OSE, 10 m synchronization cable and 5 m connection cable	387.00 €
179491	GridScan/Pro 2.500 Light curtain with 2.5 m protective field height, PNP/NPN/OSE, 10 m synchronization cable and 5 m connection cable	387.00 €

Scope of delivery

- Light curtain transmitter with M8 plug (4-pin)
- Light grid receiver with M8 plug (4-pin)
- 5.000 mm Connection cable 6x0.14 mm² AWG 26 with M8 plug (4-pin)
- 10.000 mm Synchronization cable 4x0.14 mm² AWG 26 with M8 plug (4-pin)

Features

- Type-tested
- When one device is installed on the inside and one on the outside, it is possible to use it as an electrical device to secure the door
- Direct installation in the door frame possible (integrated door blanking)
- PNP/NPN and OSE interface in one product
- Pluggable cable connections simplify assembly
- For gates with a max. closing speed of 1.6 m/s and a max. opening speed of 3 m/s
- Contactless protection of gate, persons or objects by presence detection

Area of use

For all Marantec controls and third-party products with OSE or PNP connection. For garage door openers and VTA, extension module EM 185 is additionally required

Technical data

	GridScan/Pro 1,960	GridScan/Pro 2.500
Range [m]	10	
Protective field height (max.) [m]	1.96	2.5
Gate closing speed (max.) [m/s]	1.6	
Number of beams	19	22
Safety category	2	
Operating voltage [V]	10-30 V-DC	
Rated current [A]	0.05	
Interfaces	OSE; PNP	
Protection class	IP67	
Dimensions (WxHxD) [mm]	12x1,900x14.5	12x2,438x14.5

Accessories for Light Grids

Fastening Materials



Fastening set 90

Mounting set with 90° angles for lateral mounting of a light grid

For GridScan/Pro light grid

182310
51.00 €



Fastening set clips

Installation clips for rear wall mounting of a light grid

For GridScan/Pro light grid

182312
28.00 €

Cables



Connection cable

for light grid, 10 m

For GridScan/Pro light grid

182322
56.00 €

Cables



Extension cable

for synchronization cable for light grid, 3 m

For GridScan/Pro light grid

182323
39.00 €



Extension cable

for synchronization cable for light grid, 5 m

For GridScan/Pro light grid

182324
55.00 €



Extension cable

for synchronization cable for light grid, 10 m

For GridScan/Pro light grid

182325
59.00 €

Accessories for Light Grids

Covers



Protective cover set

for GridScan/Pro 1,960 mm

For GridScan/Pro 1,960 mm. The range of the light grid is reduced by 20%

182917
90.00 €



Protective cover set

for GridScan/Pro 2,500 mm

For GridScan/Pro 2,500 mm. The range of the light grid is reduced by 20

182918
92.00 €

Spiral Cables



Article

Item no.	Description	Price
140488	Spiral cable 5x0.25 mm² - 1,600 mm with plug for door leaf junction boxes, turning length: 800-3,200 mm	43.00 €
140489	Spiral cable 5x0.25 mm² - 3,000 mm with plug for door leaf junction boxes, turning length: 800-3,200 mm	49.00 €
150801	Spiral cable 5x0,25 mm² - 5.000 mm with plug for door leaf junction boxes, turning length: 800-3,200 mm	58.00 €
184468	Spiral cable 5x0,25 mm² - 5.000 mm with plug for door leaf junction boxes, turning length: 1,250-5,000 mm	69.00 €

Scope of delivery

140488

- Spiral cable 5x0,25 mm² with cable glands, connection terminals for the control and plug for the door leaf connection box, 1,600 mm uncoiled/800-3.200 mm turning length
- Mounting bracket

150801

- Spiral cable 5x0,25 mm² with cable glands, connection terminals for the control and plug for the door leaf connection box, 5,000 mm uncoiled/800-3.200 mm turning length
- Mounting bracket

140489

- Spiral cable 5x0.25 mm² with cable glands, connection terminals for the control and plug for the door leaf junction box, 3,000 mm uncoiled/800-3,200 mm coiled length
- Bracket for the spiral cable

184468

- Spiral cable 5x0.25 mm² with cable glands, connection terminals for the control and plug for the door leaf connection box, 5,000 mm uncoiled/1,250-5,000 mm coiled length
- Mounting bracket

Technical data

	140488	140489	150801	184468
Wire cross-section [mm²]	0.25			
Turning length retracted [mm]	800			1,250
Turning length extended [mm]	3,200			5,000
Length uncoiled - control [mm]	1,600	3,000	5,000	
Cable receptacle control housing	CS housing			

Door Leaf Junction Boxes



166666



166667



140486



158153

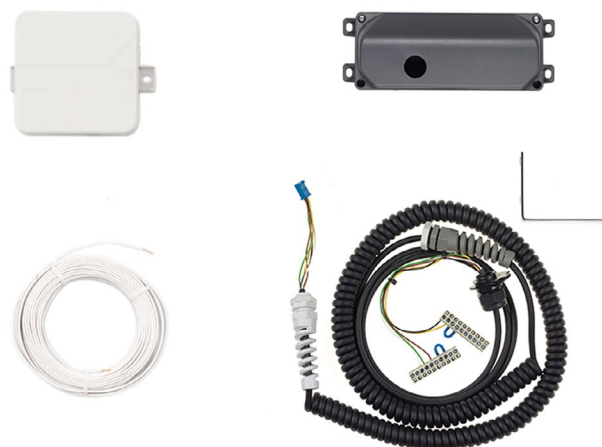
Article

Item no.	Description	Price
166666	Door leaf junction box OSE/8.2 kOhm Circuit board with connections for conventional and pluggable safety elements, IP54, with cover opening for pluggable spiral cables	14.00 €
166667	Door leaf junction box Circuit board with connections for conventional and pluggable safety elements, IP54, without cover opening for spiral cable	14.00 €
140486	Door leaf junction box OSE/8.2 kOhm with circuit board with connections for conventional safety elements, IP54, with cover opening for pluggable spiral cables	13.00 €
158153	Door leaf junction box with circuit board with connections for conventional safety elements, IP54, without cover opening for spiral cable	13.00 €

Technical data

	166666	166667	140486	158153
Connection type	Pluggable			
Inputs	1 input for conventionally wired contact strips or opto-sensors 2 inputs for conventionally wired slack rope switches or wicket door contacts 2 inputs with socket (Molex 3-pole) for optosensors with plug (Molex 3-pole) 2 inputs with socket (Molex 2-pole) for slack rope switches with plug (Molex 2-pole)		1 input for conventionally wired contact strips or opto-sensors 2 inputs for conventionally wired slack rope switches or wicket door contacts	
Outputs	1 output with socket (Molex 6-pin) for spiral cable with plug (Molex 6-pin)		1 output with socket (Molex 6-pin) for spiral cable with plug (Molex 6-pin)	
Protection class	IP54			
Dimensions (WxHxD)[mm]	165x60x40			

Door Leaf Junction Boxes



Article

Item no.	Description	Price
177767	Protect-Switch 190 Door leaf junction box for wicket door contacts for garage door openers, consisting of door leaf junction box IP54, spiral cable 5x0,25 mm ² , 1.600 mm uncoiled and 800-3.200 mm coiled length, pluggable; junction box and 10.000 mm connection cable	81.00 €

Area of use

For Comfort 260 (speed), 270 (speed), 280, 360, 370, 380 and 390

Scope of delivery

- Spiral cable 5x0,25 mm² with cable glands, connection terminals for the control and plug for the door leaf connection box, 1.600 mm uncoiled/800-3.200 mm coiled length
- Bracket for spiral cable
- Gate connection box with board OSE/8,2 kOhm
- Junction box
- Connecting cable 2-core, 10.000 mm
- Installation material

Technical data

	Spiral cable 5x0.25 mm ² - 1,600 mm	Door leaf junction box OSE/8.2 kOhm	Junction box
Turning length retracted [mm]	800		
Turning length extended [mm]	3,200		
Length uncoiled - control [mm]	1,600		
Inputs		1 input for conventionally wired contact strips or opto-sensors 2 inputs for conventionally wired slack rope switches or wicket door contacts	
Outputs		1 output with socket (Molex 6-pin) for spiral cable with plug (Molex 6-pin)	
Protection class		IP54	IP55
Dimensions (WxHxD)[mm]		165x60x40	85x85x37

Accessories for Door Leaf Junction Boxes

Connecting Cables



Connecting cable

for connecting 2 door leaf junction boxes, 10 m

For door leaf junction boxes

158154
20.00 €



Connecting cable pluggable

for connecting 2 door leaf junction boxes, 4.5 m

For door leaf junction boxes

Cable length [m]	Item no.	Price
4.5	179139	18.80 €
6.5	179140	18.80 €
8.5	179141	18.80 €

Sealing sets



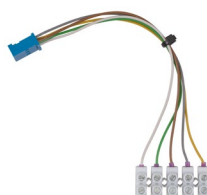
Dichtset IP65

for increasing the protection class of door leaf junction boxes

For door leaf junction boxes

166621
13.00 €

Adapters



Adapter

for connecting pluggable door leaf junction boxes to conventional spiral cables

For pluggable door leaf junction boxes. For conventional spiral cable 5x0.25 mm² or 5x0.5 mm²

167780
18.00 €

Opto-sensors



Article

Item no.	Description	Price
188052	Special 712 Opto-sensor set for garage door openers, consisting of opto-sensor set, adapter sleeves 11/22 mm, door leaf junction box, spiral cable, junction box, 10.0 m connection cable and EP 143 expansion board	197.00 €

Area of use

For Comfort 260 (speed), 270 (speed), 280, 360, 370, 380 and 390

Scope of delivery

- Spiral cable 5x0,25 mm² with cable glands, connection terminals for the control and plug for the door leaf connection box, 1.600 mm uncoiled/800-3.200 mm coiled length
- Bracket for spiral cable
- Gate leaf junction box with board and opening for spiral cable
- 4 cable entries for door leaf junction box
- F photoelectric sensor transmitter with 10,500 mm cable
- F photoelectric sensor receiver with 1,000 mm cable
- 2 F-distance sleeves 11/22 mm
- EP 143 Extension board
- Junction box
- Connecting cable 7x0,25 mm², 10.000 mm
- Installation material

Technical data

	F-Transmitter	F-receiver
Range [m]	10	
Connection type	Conventional	
Operating voltage [V]	4-28 V-DC	
Interfaces	OSE	
Diameter [mm]	11	
Cable length [m]	10.5	1

Opto-sensor Sets



121685



160264



160265

Article

Item no.	Description	Price
121685	Opto-sensor set consisting of transmitter with 15 m cable, receiver with 0.4 m cable, adapter sleeves 11/22 mm	68.00 €
160264	Opto-sensor set consisting of transmitter with 10.5 m cable, receiver with 1 m cable, adapter sleeves 11/22 mm	52.00 €
160265	Opto-sensor set consisting of transmitter with 10.5 m cable, receiver with 0.4 m cable, adapter sleeves 11/22 mm with steel reinforcement	54.00 €

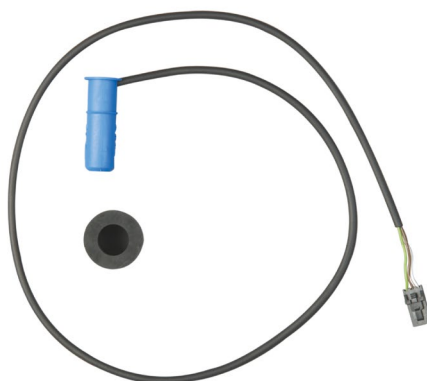
Area of use

For controls with connection for the OSE opto-sensors. For door leaf junction boxes with connection for conventional safety elements

Technical data

	F-Transmitter	F-receiver	F spacer sleeve set 11/22 mm
Range [m]	13		
Connection type	Conventional		
Operating voltage [V]	4-28 V-DC		
Interfaces	OSE		
Protection class	IP68		
Diameter [mm]	11		
Length [mm]	37		30

Receivers for Opto-sensors



Article

Item no.	Description	Price
119200	F receiver pluggable 0.4 m cable, pluggable, OSE	28.00 €

Area of use

For controls with connection for OSE opto-sensors. For door leaf junction boxes with connection for pluggable safety elements

Technical data

	119200
Range [m]	10
Connection type	Pluggable
Operating voltage [V]	4-28 V-DC
Interfaces	OSE
Protection class	IP68
Diameter [mm]	11
Length [mm]	37
Cable length [m]	0.4

Transmitters for Opto-sensors



Article

Item no.	Description	Price
163195	F transmitter pluggable 0.5 m cable, pluggable, OSE	40.00 €
163194	F transmitter pluggable 4 m cable, pluggable, OSE	42.00 €
147975	F transmitter pluggable 6 m cable, pluggable, OSE	45.00 €
160157	F transmitter pluggable 10.5 m cable, pluggable, OSE	47.00 €

Area of use

For controls with connection for OSE opto-sensors. For door leaf junction boxes with connection for pluggable safety elements

Technical data

	163195	163194	147975	160157
Range [m]	10			
Connection type	Pluggable			
Operating voltage [V]	4-28 V-DC			
Interfaces	OSE			
Protection class	IP68			
Diameter [mm]	11			
Length [mm]	37			
Cable length [m]	0.5	4	6	10.5

Accessories for Opto-sensors

Adapter Sleeves



F spacer sleeve set 11/14 mm

for opto-sensors, 2 pieces

Length [mm]	30
Outer diameter [mm]	14
Diameter inside [mm]	11

166375
3.50 €



F spacer sleeve set 11/22 mm

for opto-sensors, 2 pieces

Length [mm]	30
Outer diameter [mm]	22
Diameter inside [mm]	11

79834
4.10 €



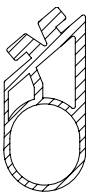
F spacer sleeve 11/22 mm

with steel insert for opto-sensors

Length [mm]	35
Outer diameter [mm]	22
Diameter inside [mm]	11

165235
4.10 €

Bottom Door Profiles

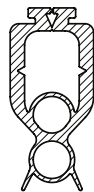


Bottom door profile (1 chamber)

Bottom door profile 30,2x40 mm for 22 mm opto-sensors, specify desired length when ordering, price per meter

Dimensions (WxHxL) [mm]	30.2x40x
Diameter inside [mm]	20
Weight per meter [kg]	0.5

152658
12.00 €/m

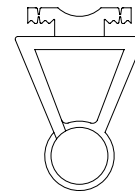


Bottom door profile (2 chambers)

Bottom door profile 29x58 mm for 14 mm opto-sensors, specify desired length when ordering, price per meter

Dimensions (WxHxL) [mm]	29x58x
Diameter inside [mm]	13
Weight per meter [kg]	0.9

63823
14.00 €/m



F profile P1

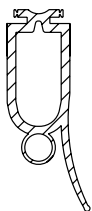
Bottom door profile 24,5x29,5 mm for 11 mm opto-sensors, 50 m roll, price per meter

Dimensions (WxHxL) [mm]	24.5x35x50,000
Diameter inside [mm]	11
Weight per meter [kg]	0.2

121454
9.40 €/m

Accessories for Opto-sensors

Bottom Door Profiles



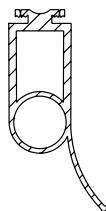
F profile P2

Bottom door profile 25x56,3 mm for 11 mm opto-sensors, with sealing lip, 25 m roll, price per meter

Dimensions (WxHxL)[mm]	25x74.5x25,000
Diameter inside [mm]	11
Weight per meter [kg]	0.7

114678

12.00 €/m



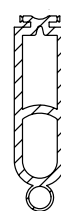
F profile P4

Bottom door profile 25x52 mm for 22 mm opto-sensors, with sealing lip, 25 m roll, price per meter

Dimensions (WxHxL)[mm]	25x75.25x25,000
Diameter inside [mm]	21
Weight per meter [kg]	0.9

114677

15.00 €/m



F profile P6

Bottom door profile 25x90 mm for 11 mm opto-sensors, 25 m roll, price per meter

Dimensions (WxHxL)[mm]	25x90x25,000
Diameter inside [mm]	11
Weight per meter [kg]	1.2

115811

19.00 €/m

Stop Buffers



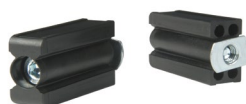
F-stop buffer 1

Stop buffer, 25 mm high, with T-nut, 2 pieces

	F-stop buffer 1
Material	PP
Dimensions (WxHxD) [mm]	18x25x30

156609

7.60 €



F stop buffer 2

Stop buffer, 55 mm high, with T-nut, 2 pieces

	F stop buffer 2
Material	PP
Dimensions (WxHxD) [mm]	18x55x30

100893

6.80 €



F stop buffer 3

Stop buffer, 46 mm high, with T-nut, 2 pieces

	F stop buffer 3
Material	PP
Dimensions (WxHxD) [mm]	25x46x45

122954

13.00 €

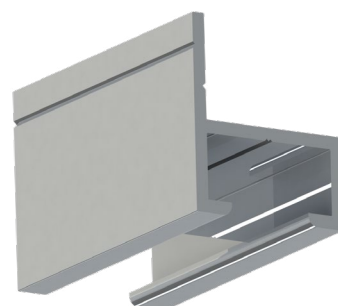
Accessories for Opto-sensors



Aluminum profile 24x8 mm



Aluminum profile 25x18 mm

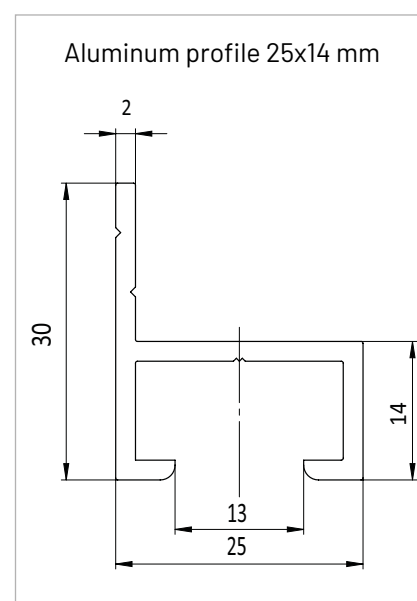
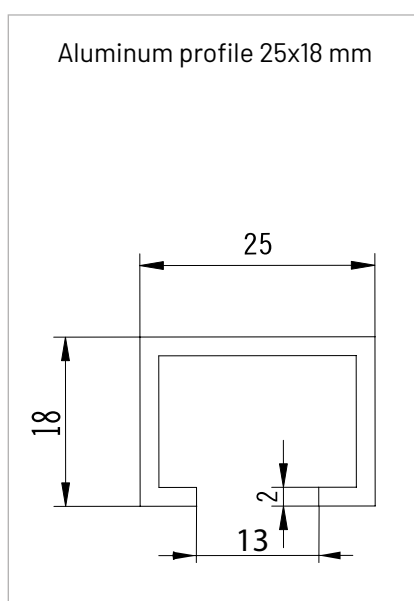
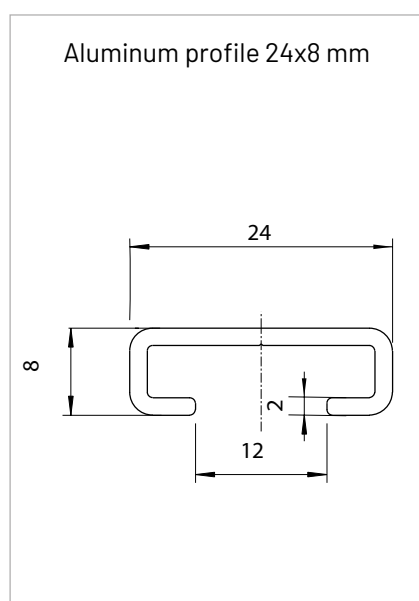


Aluminum profile 25x14 mm

Article

Item no.	Description	Price
99590	Aluminum profile 24x8 mm 2 m	26.00 €
177309	Aluminum profile set 24x8 mm 5 m, 10 pieces	348.00 €
115798	Aluminum profile 25x18 mm 2 m	18.00 €
169153	Aluminum profile 25x14 mm 2 m, for fastening in front of the gate	37.00 €

Technical drawings

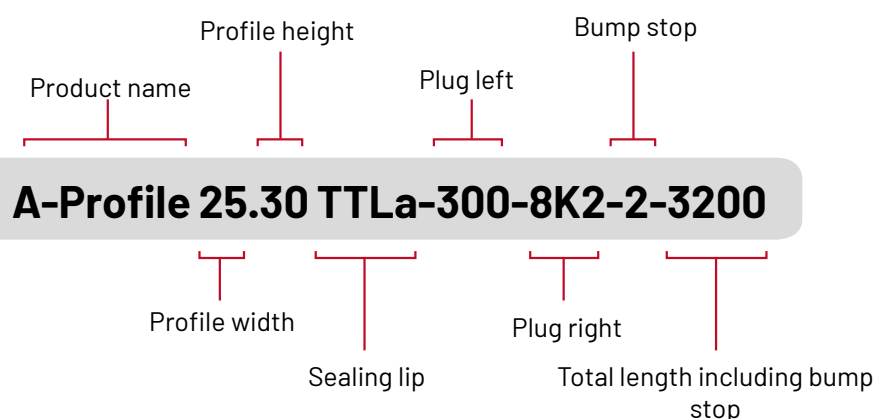




Electrical Contact Strips

Order contact strip

1. Determine gate width	
2. Transmit order data	
Profile type	25.30 TT/25.45 TT/35.55 TsT
Sealing lip	without/with sealing lip (La)
Plug left	without/300/1,000/2,500/5,000/10,000 mm cable/8.2 kOhm resistor
Plug right	without/300/1,000/2,500/5,000/10,000 mm cable/8.2 kOhm resistor
Bump stop	without/with 2 stop buffers
Aluminum profile	without/24x8/25x18/AL 25-14
Determined door width	XXXX mm
Mounting	Cut profile to size 27.00 €/Cut profile and mount ready for connection with accessories 48.00 €



* The side information is always given from the inside view of the door.

** The gate width is the width of the gate wing/section and should not be confused with the clear passage width

Electrical Contact Strips

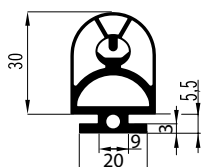


Article

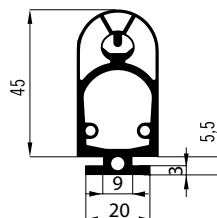
Item no.	Description	Price
186946	A profile 25.30 TT Kontaktleistenprofil, 25x30 mm, 30 m Rolle, Preis pro Meter	36.00 €/m
186947	A profile 25.30 TTLa Kontaktleistenprofil, 25x30 mm, mit Dichtlippe, 30 m Rolle, Preis pro Meter	36.00 €/m
186948	A profile 25.45 TT Contact strip profile, 25x45 mm, 30 m roll, price per meter	46.00 €/m
186949	A profile 25.45 TTLa Contact strip profile, 25x45 mm, with sealing lip, 30 m roll, price per meter	47.00 €/m
186950	A profile 35.55 TsT Contact strip profile, 35x55 mm, 30 m roll, price per meter	40.00 €/m
186951	A profile 35.55 TsTLa Contact strip profile, 35x55 mm, with sealing lip, 30 m roll, price per meter	40.00 €/m

Technical drawings

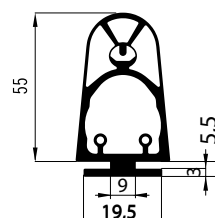
186946



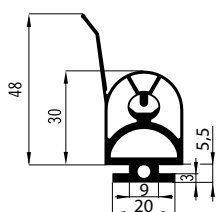
186948



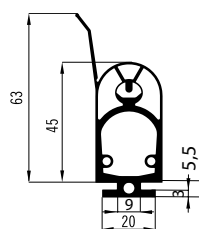
186950



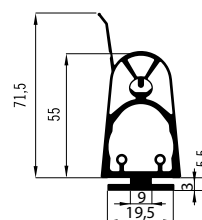
186947



186949

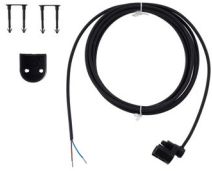


186951



Accessories for Electrical Contact Strips

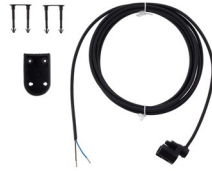
Connector Plugs



Anschlussstecker 25.30

Use for	For A profile 25.30 TT(La)
Protection class	IP67
Dimensions (WxHxD)[mm]	28x31x17

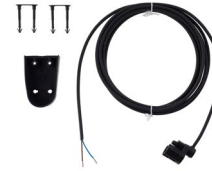
Cable length [m]	Item no.	Price
0.3	186952	17.00 €
1	186955	19.00 €
2.5	186958	20.00 €
5	186961	28.00 €
10	186964	42.00 €



Anschlussstecker 25.45

Use for	For A profile 25.45 TT(La)
Protection class	IP67
Dimensions (WxHxD)[mm]	28x46x17

Cable length [m]	Item no.	Price
0.3	186953	18.00 €
1	186956	19.00 €
2.5	186959	21.00 €
5	186962	26.00 €
10	186965	40.00 €



Anschlussstecker 35.55

Use for	For A profile 35.55 TsT(La)
Protection class	IP67
Dimensions (WxHxD)[mm]	38x57x17

Cable length [m]	Item no.	Price
0.3	186954	18.00 €
1	186957	22.00 €
2.5	186960	20.00 €
5	186963	33.00 €
10	186966	42.00 €

Terminating Plugs



A connector 25.30 - 8.2 kOhm

Termination plug with 8.2 kOhm resistor

Use for	For A profile 25.30 TT(La)
Protection class	IP67
Dimensions (WxHxD)[mm]	28x31x17

186943
16.00 €



A connector 25.45 - 8.2 kOhm

Termination plug with 8.2 kOhm resistor

Use for	For A profile 25.45 TT(La)
Protection class	IP67
Dimensions (WxHxD)[mm]	28x46x17

186944
16.00 €



A connector 35.55 - 8.2 kOhm

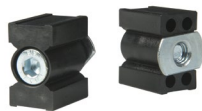
Termination plug with 8.2 kOhm resistor

Use for	For A profile 35.55 TsT(La)
Protection class	IP67
Dimensions (WxHxD)[mm]	38x57x17

186945
16.00 €

Accessories for Electrical Contact Strips

Stop Buffers



F-stop buffer 1

Stop buffer, 25 mm high, with T-nut, 2 pieces

	F-stop buffer 1
Material	PP
Dimensions (WxHxD)[mm]	18x25x30

156609
7.60 €



F stop buffer 2

Stop buffer, 55 mm high, with T-nut, 2 pieces

	F stop buffer 2
Material	PP
Dimensions (WxHxD)[mm]	18x55x30

100893
6.80 €



F stop buffer 3

Stop buffer, 46 mm high, with T-nut, 2 pieces

	F stop buffer 3
Material	PP
Dimensions (WxHxD)[mm]	25x46x45

122954
13.00 €

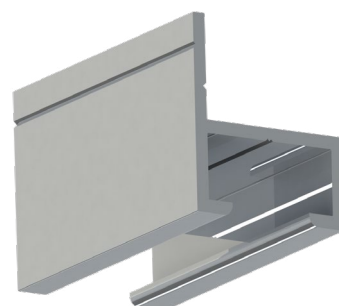
Accessories for Electrical Contact Strips



Aluminum profile 24x8 mm



Aluminum profile 25x18 mm

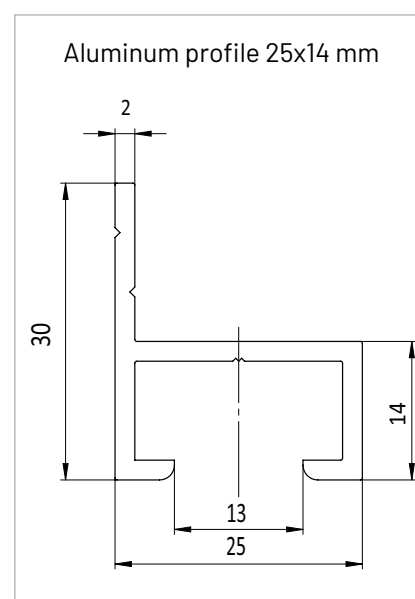
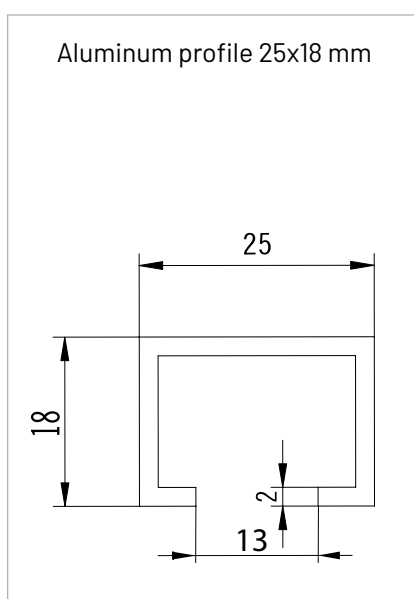
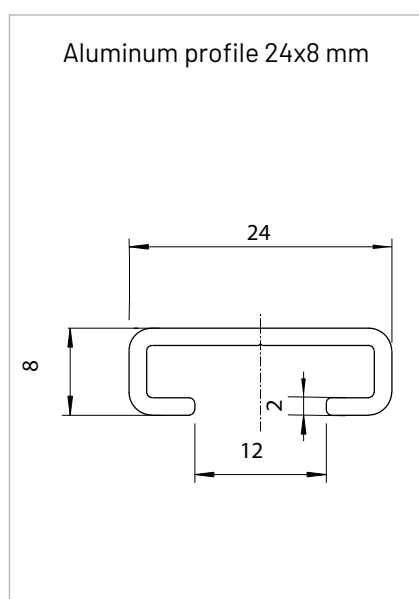


Aluminum profile 25x14 mm

Article

Item no.	Description	Price
99590	Aluminum profile 24x8 mm 2 m	26.00 €
177309	Aluminum profile set 24x8 mm 5 m, 10 pieces	348.00 €
115798	Aluminum profile 25x18 mm 2 m	18.00 €
169153	Aluminum profile 25x14 mm 2 m, for fastening in front of the gate	37.00 €

Technical drawings



Leading Closing Edge Safety Devices



Article

Item no.	Description	Price
140539	Protect-Opto 602 Leading light barrier, consisting of DUO receiver and transmitter with 1 m cable, IP54, conventional	247.00 €

Area of use

For controls with connection for OSE opto-sensors

Scope of delivery

- F photoelectric sensor DUO transmitter with 1,000 mm cable
- F-Light barrier DUO receiver with 1.000 mm cable
- 2 installation brackets
- 2 floor installation plates
- Installation material

Technical drawings

	Protect-Opto 602
Range [m]	6
Connection type	Conventional
Operating voltage [V]	4-28 V-DC
Power consumption [VA/W/kW]	0.12 W
Protection class	IP54
Dimensions (WxHxD)[mm]	52x331x153

Leading Closing Edge Safety Devices



Article

Item no.	Description	Price
177766	Protect-Opto 603 DUO leading photoelectric sensor for garage door openers, consisting of DUO opto-sensor set with mounting brackets, 2 door leaf junction boxes, 10 m door leaf connecting cable, spiral cable, junction box, 10 m connecting cable and EP 144 expansion board	393.00 €

Area of use

For Comfort 260 (speed), 270 (speed), 280, 360, 370, 380 and 390

Scope of delivery

- F photoelectric sensor DUO transmitter with 1,000 mm cable
- F-Light barrier DUO receiver with 1.000 mm cable
- 2 installation brackets and 2 floor installation plates
- EP 144 expansion board
- Junction box
- Connection cable 7x0,25 mm², 10.000 mm
- Spiral cable 5x0,25 mm², 1.600 mm uncoiled
- 2 gate leaf junction boxes with board OSE/8,2 kOhm
- Gate leaf connecting cable 7x0,25 mm², 10.000 mm
- Installation material

Technical data

	Protect-Opto 602	EP 144	Door leaf junction box OSE/8.2 kOhm	Junction box
Range [m]	6			
Connection type	Conventional	Pluggable		
Operating voltage [V]	4-28 V-DC	24 V-DC		
Power consumption [VA/W/kW]	0.12 W			
Protection class	IP54	IP00	IP54	IP55
Dimensions (WxHxD) [mm]	52x331x153	30x50x20	165x60x40	85x85x37

Wired Wicket Door Contacts



Special 411



Wicket door contact for installation

Article

Item no.	Description	Price
152839	Special 411 Wicket door contact in housing for garage door openers, system wiring, NC	114.00 €
116025	Wicket door contact for installation with 5 m cable, conventional, 8.2 kOhm, for installation in the frame, complies with DIN EN 13849-1 PI c cat 2.	19.00 €

Area of use

152839

For Comfort 260 (speed), 270 (speed), 280, 360, 370, 380 and 390. Can only be used in conjunction with EP 141 expansion circuit board

116025

For controls with connection for 8.2 kOhm slack rope switch

Scope of delivery

152839

- Wicket door contact
- Spiral cable with connectors for system cabling, 2,500/7,000 mm uncoiled and 600-2,400 mm coiled length
- Holder for spiral cable
- Installation material

116025

- Wicket door contact with 5.000 mm connection cable
- Magnet

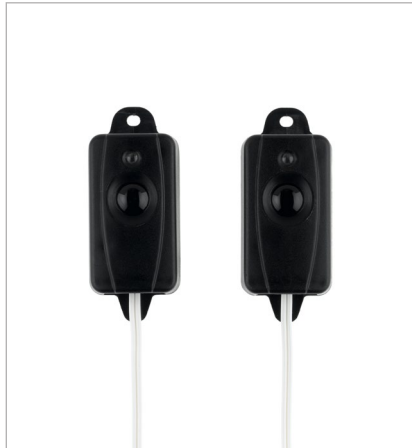
Technical data

	Special 411	Wicket door contact for installation
Safety category		2
Connection type	Conventional	
Number of contacts	1	
Contact type	1 NC	8K2
Protection class	IP65	IP68
Dimensions (WxHxD) [mm]	60x105x44	18.5x37.5x3
Cable length [m]		5

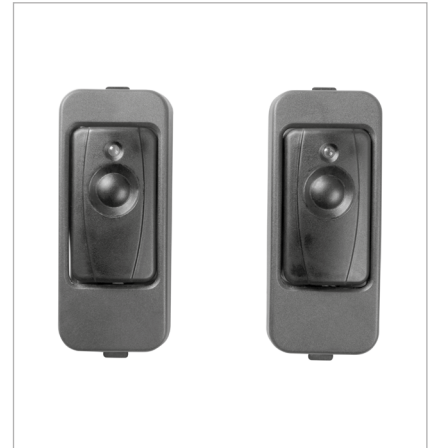
Through-beam Light Barriers



97725



88176



86424, 90457

Article

Item no.	Description	Price
97725	Special 630 with installation bracket set Through beam photoelectric sensor with 8 m range, 2-wire, IP54, with installation brackets, with 10 m cable	72.00 €
88176	Special 630 Through beam photoelectric sensor with 8 m range, 2-wire, IP54, with 2x 10 m cable	58.00 €
86424	Special 630 One-way photocell for door frames with 1 mm sheet thickness, 8 m range, 2-wire, IP54, with 2x 10 m cable	58.00 €
90457	Special 630 One-way light barrier for door frames with 2 mm sheet thickness, 8 m range, 2-wire, IP54, with 2x 10 m cable	58.00 €

Features

97725, 88176

Special 630

Installation bracket set

- Function and contamination signaling by LED
- 2-wire technology: supply, signal and testing via only 2 polarity reversal protected and connectable wires
- Suitable for installation in the CH-51N and CH-101N pedestals
- Optical safety device to protect against personal injury and damage to property
- Allows installing on the floor, wall or door frame

86424

- Function and contamination signaling by LED
- 2-wire technology: supply, signal and testing via only 2 polarity reversal protected and connectable wires
- Suitable for clipping into matching cutouts in the door frame
- Suitable for installation in the CH-51N and CH-101N pedestals
- Optical safety device to protect against personal injury and damage to property

90457

- Function and contamination signaling by LED
- 2-wire technology: supply, signal and testing via only 2 polarity reversal protected and connectable wires
- Suitable for clipping into matching cutouts in the door frame
- Suitable for installation in the CH-51N and CH-101N pedestals
- Optical safety device to protect against personal injury and damage to property

Technical drawings



Area of use

For controls with connection for 2-wire light barriers

Technical data

	Special 630		Installation bracket set
Range [m]	8		
Operating voltage [V]	24 V-DC		
Interfaces	2-wire		
Protection class	IP54		
Dimensions (WxHxD)[mm]	27x64.5x19		38x170x35

	88176	86424	90457
Range [m]	8		
Range (min./max.)[m]	1/8		
Operating voltage [V]	24 V-DC		
Interfaces	2-wire		
Protection class	IP54		
Dimensions (WxHxD)[mm]	27x64.5x19	35x85x19	

Specific accessories

Installation bracket set

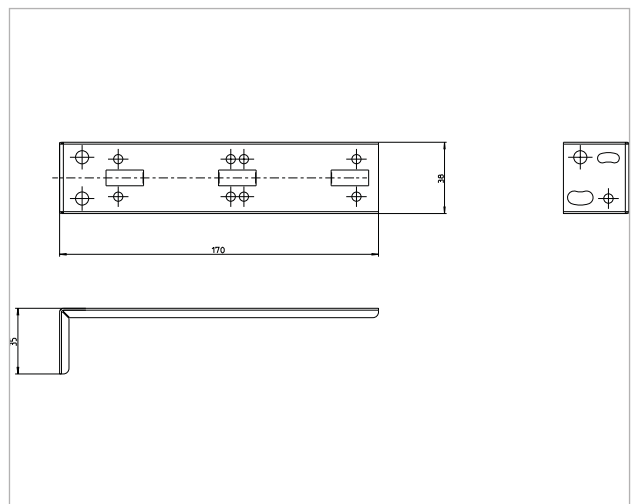
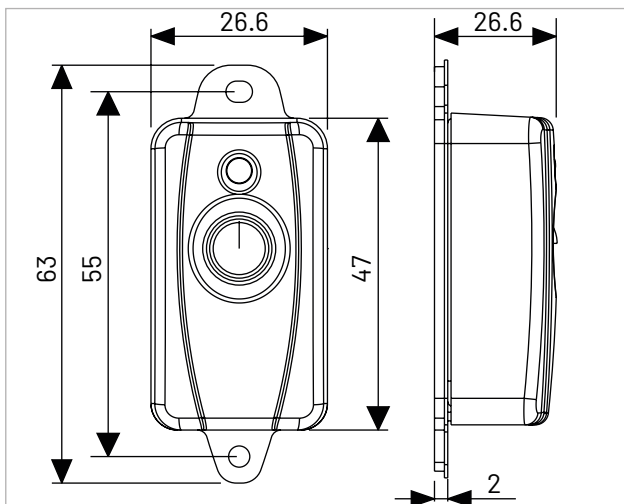
for Special 630 light barrier

88175
14.00 €

Special 670

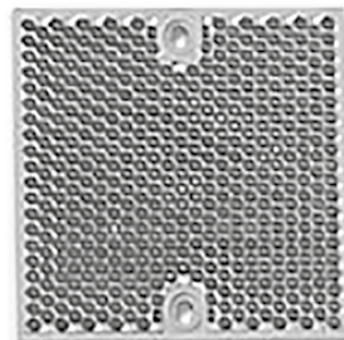
Light barrier expander for connecting 2 pieces of 2-wire light barriers to one input

97559
36.00 €





Retro-reflective Photoelectric Sensors



Article

Item no.	Description	Price
85295	Special 613-2 Reflex light barrier with 8 m range, 2-wire, IP65, with 7.5 m cable	150.00 €

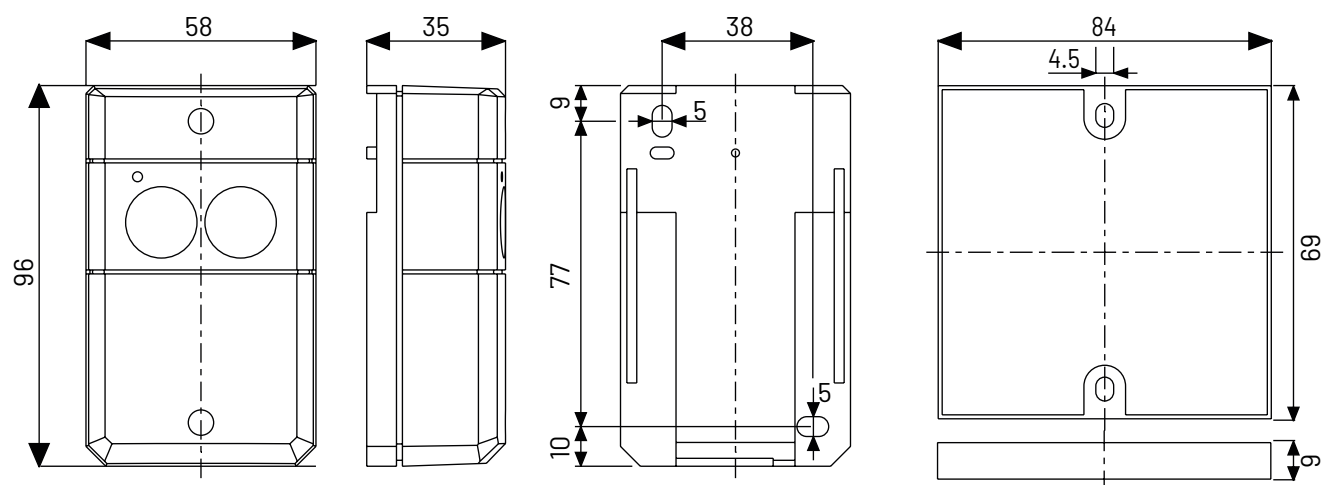
Area of use

For controls with connection for 2-wire light barriers

Features

- 2-wire technology: supply, signal and testing via only 2 polarity reversal protected and connectable wires
- The reflector saves the laying of a cable from the control to the opposite side of the gate
- Optical safety device to protect against personal injury and damage to property

Technical drawings



Technical data

	Special 613-2
Range [m]	8
Range (min./max.) [m]	1/8
Operating voltage [V]	24 V-DC
Interfaces	2-wire
Protection class	IP65
Dimensions (WxHxD) [mm]	59x96x55
Cable length [m]	7.5

Specific accessories



Installation bracket set

for Special 613-2 photoelectric sensor and reflector

85314
34.00 €



Special 670

Light barrier expander for connecting 2 pieces of 2-wire light barriers to one input

97559
36.00 €

Pull-in Safety Devices



Article

Item no.	Description	Price
96150	Draw-in protection with 10 m range, 24 V-DC, OSE, IP68, with 10.5/10.5 cable pre-mounted	176.00 €

Area of use

For controls with connection for OSE pull-in safety devices

Scope of delivery

- Transmitter with pull in safety device, 10,500 mm connection cable
- Receiver with pull in safety device , 10,500 mm connection cable
- 2 installation brackets

Technical data

	Draw-in protection
Range [m]	10
Range (min./max.)[m]	0/10
Operating voltage [V]	24 V-DC
Rated current [A]	0.06
Interfaces	OSE
Protection class	IP68
Dimensions (WxHxD)[mm]	73x40x20
Cable length [m]	10.5



Loop Detectors



Control 403

Article

Item no.	Description	Price
104057	Control 403 Induction loop detector, 2-channel, 230 V-AC, DIN rail installation	318.00 €
184379	Control 403 Induction loop detector, 2-channel, 230 V-AC, in housing 181x100x145 mm	390.00 €

Features

- Contactless operation by passing over an induction loop
- Directional detection avoids false openings and saves energy costs
- Automatic measurement and display of loop inductance
- Immediate error detection on the illuminated LC display
- Easy programming and simulation possibility
- Max. detectable vehicle speed of 50 km/h (with appropriate loop)
- Installation on a top-hat rail

184379

- Weather resistant housing

Technical data

	104057	184379
Loop inductance	Max. 20-1,000 μ H, ideally 80-300 μ H	max. 20-1.000 μ H, ideal 80-300 μ H
Connection type	Conventional	
Operating voltage [V]	100-240 V/1~	
Power consumption [VA/W/ kW]	2.9 W	
Number of contacts	3	
Contact type	3 CO	
Contact load (max.)	Loop output: 240 V-AC/2 A; 30 V-DC/1 A Alarm output: 40 V-AC/40 V-DC/0.3 A	
Protection class	IP20	IP65
Dimensions (WxHxD)[mm]	22.5x94x88	100x181x145
Width (pitch units)	1.5	

Accessories for Loop Detectors

Loop Cables



Loop cable

for laying and grouting in the ground, 50 m

Number of wires	1
Wire cross-section [mm ²]	1.5
Continuous temperature [°C]	180
Short-term temperature [°C]	210
Cable length [m]	50

8001745
54.00 €



Loop cable

for laying and grouting in the ground, 100 m

Number of wires	1
Wire cross-section [mm ²]	1.5
Continuous temperature [°C]	180
Short-term temperature [°C]	210
Cable length [m]	100

121881
106.00 €

Motion Sensors



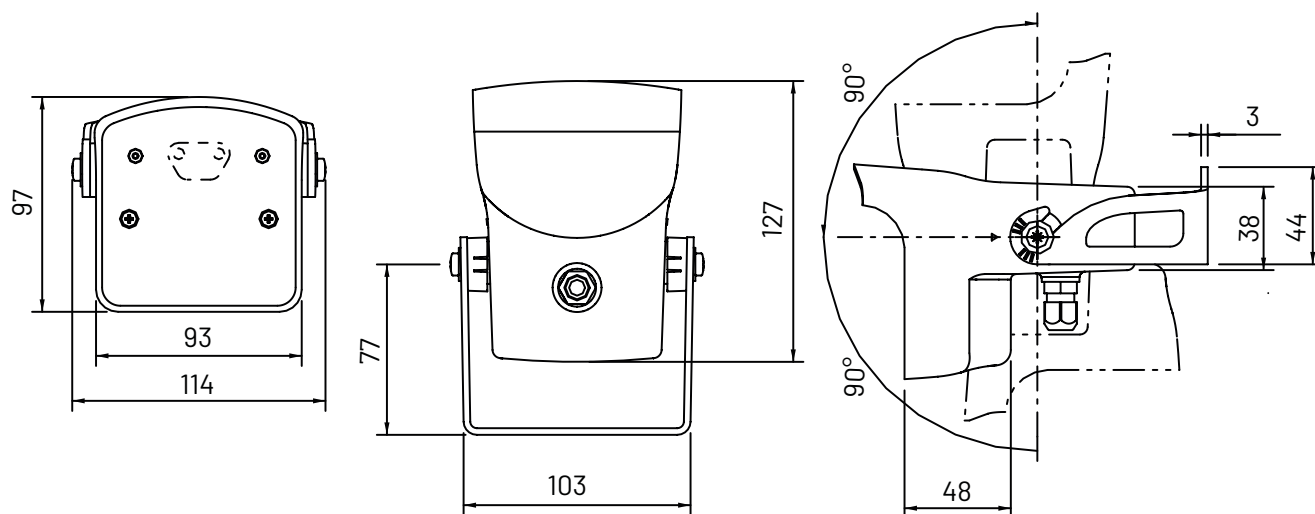
Article

Item no.	Description	Price
159708	FALCON XL Radar motion detector, 2.0-3.5 m installation height, IP65, with 10 m cable	304.00 €
122432	FALCON Radar motion detector, 3.5-7.0 m installation height, IP65 with 10 m cable	304.00 €

Features

- Non-contact opening of doors by entering the detection area
- Directional detection avoids false openings and saves energy costs
- Capture filter to distinguish between people and vehicles

Technical drawings



Technical data

	FALCON XL	FALCON
Detection field radar (WxL max.) [m]	4x2	4x5
Detection field active infrared (WxL max.) [mm]	0x0	
Installation height (min./max.) [m]	2/3.5	3.5/7
Operating voltage [V]	12-24 V-AC; 12-24 V-DC	
Power consumption [VA/W/kW]	2 W	
Outputs	1 potential-free relay contact (C0)	
Contact type	1 C0	
Contact load (max.)	60 VA/30 W	
Sensoren	Radar	
Radio frequency	2.4 GHz	
Protection class	IP65	
Dimensions (WxHxD) [mm]	127x102x96	

Specific accessories



Remote control

Infrared remote control for setting radar motion detectors and laser scanners

148657
35.00 €



Spotfinder

Detector for infrared light curtains, presence sensor

148764
159.00 €

Motion Sensors



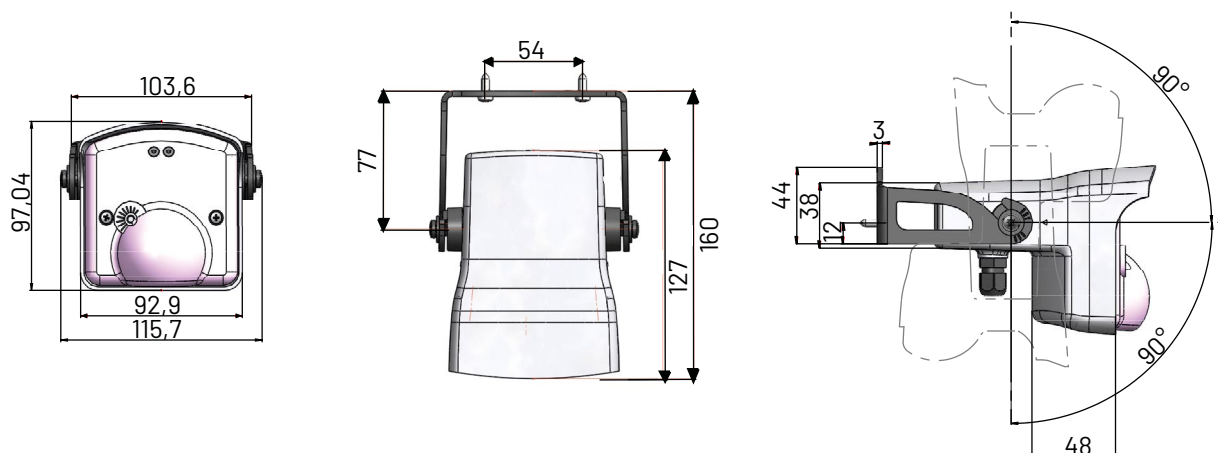
Article

Item no.	Description	Price
162041	CONDOR XL Radar motion detector and active infrared presence sensor, 2.0-3.5 m installation height, IP65, with 10 m cable	658.00 €
157270	CONDOR Radar motion detector and active infrared presence sensor, 3.5-7.0 m installation height, IP65, with 10 m cable	658.00 €

Features

- Non-contact opening of doors by entering the detection area
- Contactless protection of gate, persons or objects by presence detection in the entrance of the gate
- Directional detection avoids false openings and saves energy costs
- Capture filter to distinguish between people and vehicles
- Customizable detection field and minimum size of objects to be detected

Technical drawings



Technical data

	CONDOR XL	CONDOR
Detection field radar (WxL max.) [m]	4x2	4x5
Detection field active infrared (WxL max.) [mm]	4x4	
Installation height (min./max.) [m]	2/3.5	3.5/6
Operating voltage [V]	12-24 V-AC; 12-24 V-DC	
Power consumption [VA/W/kW]	3.5 W	
Outputs	2 potential-free relay contacts (C0)	
Contact type	2 C0	
Contact load (max.)	1 A (resistive)/48 VA/30 W	
Sensoren	Radar; Active infrared	
Wave length [nm]	875	
Radio frequency	2.4 GHz	
Protection class	IP65	
Dimensions (WxHxD) [mm]	102x96x127	

Specific accessories



Remote control

Infrared remote control for setting radar motion detectors and laser scanners

148657
35.00 €



Spotfinder

Detector for infrared light curtains, presence sensor

148764
159.00 €

License Plate Recognition Systems



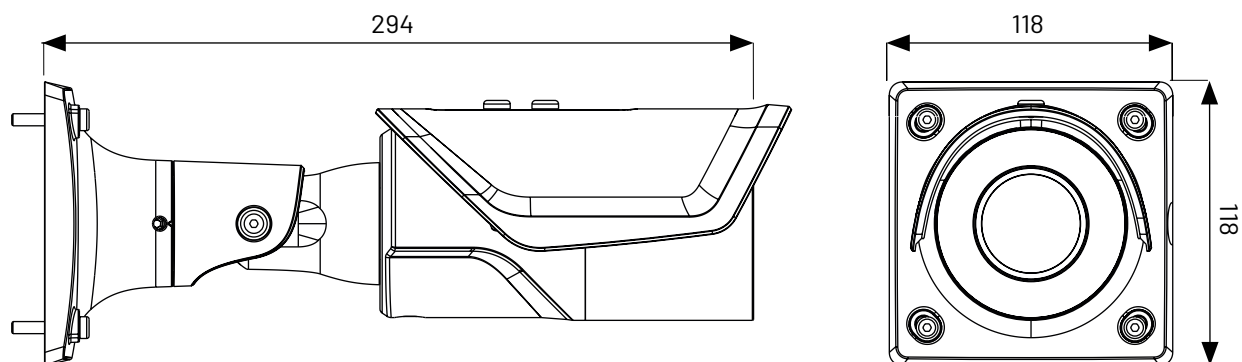
Article

Item no.	Description	Price
179994	IB9387-LPR LPR camera for license plate recognition with integrated software, 2-6 m range, 12 V-DC or PoE, IP66	1755.00 €

Features

- License plate recognition camera
- Recognizes a license plate, compares it with an access list and can switch an output (e.g. opening impulse for a control)
- License plates are detected by day and night (integrated infrared emitters)
- Works in over 80 countries worldwide
- All camera settings remotely changeable via LAN (image, zoom, focus, detection, access lists)
- Simultaneous access of up to 10 persons possible
- License plate images are stored on an SD card or on a server, automatic deletion adjustable
- Supply via 12 V DC or Power over Ethernet (PoE)

Technical drawings



Technical data

	IB9387-LPR
Range (min./max.) [m]	2/6
Installation height (min./max.) [m]	1/3
Resolution	2.560x1,920 (5 MP)
Operating voltage [V]	12 V-DC; 36-57 V-DC (PoE)
Power consumption [VA/W/ kW]	12 W
Inputs	1 PoE (802.3af) 1 voltage input with DC socket 5.5x2.1 mm 1 programmable potential-free input
Outputs	1 floating output, 5 V-DC, with Wiegand interface
Interfaces	PoE (802.3af); RJ45; DC socket (5.5x2.1 mm)
Protection class	IP66
Dimensions (WxHxD) [mm]	118x118x294

Specific accessories

See next double page.

Accessories for License Plate Recognition Systems

Junction box



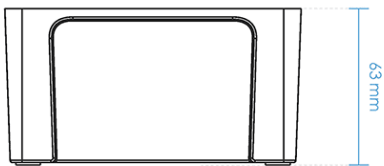
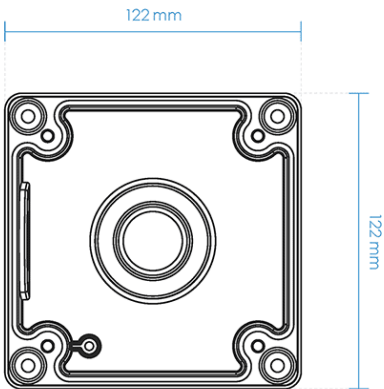
Junction box

for waterproof connection of a LPR camera

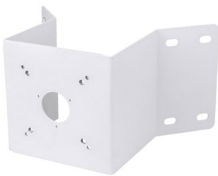
Material	Aluminum die casting
Dimensions (WxHxD)[mm]	122x122x63
Weight [kg]	0.55

178732

56.00 €



Corner adapter



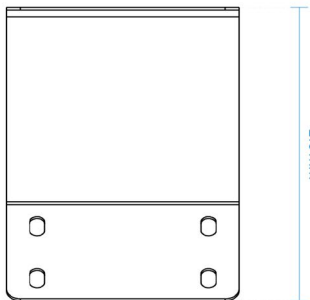
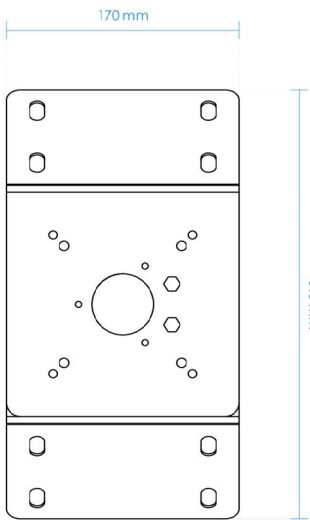
Corner adapter

for installation an LPR camera on a corner

Material	Steel (galvanized)
Dimensions (WxHxD)[mm]	315x170x216
Weight [kg]	2.19

178731

176.00 €



Mast adapter



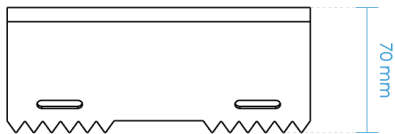
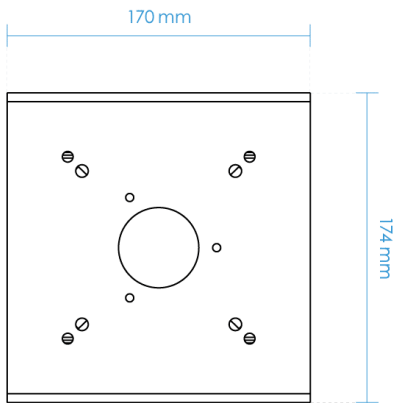
Mast adapter

for installation an LPR camera on a 90-152 mm round post

Material	Steel (galvanized)
Dimensions (WxHxD)[mm]	174x170x70
Weight [kg]	1

178730

139.00 €



Accessories for License Plate Recognition Systems

Power supply and adapter plug



Power supply 12 V-DC/2.5 A with adapter plug

for supply of up to 2 LPR cameras, DIN rail installation, with adapter plug for LPR camera

Input voltage [V]	85-264 V/1~
Output voltage [V]	12 V-DC
Output power [kW]	0.024

183341
56.00 €



Adapter plug

Adapter plug with screw terminals for LPR camera

Interfaces	DC socket (5.5x2.1 mm)
------------	------------------------

183811
19.00 €

PoE Injector



PoE Injector 1-Port 15 W

for supplying an LPR camera via the network cable

Inputs	1 LAN port (10/100 MBit/s)
Outputs	1 PoE port (802.3af)
Input voltage [V]	100-240 V/1~
Output voltage [V]	36-57 V-DC (PoE)
Output power [kW]	0.0154

183755
80.00 €

PoE switch



PoE switch 4 port 60 W

for supplying up to 4 LPR cameras via the network cable

Inputs	2 LAN ports (10/100 MBit/s)
Outputs	4 PoE(+) ports (802.3af/at)
Input voltage [V]	100-240 V/1~
Output voltage [V]	36-57 V-DC (PoE)
Output power [kW]	0.06

183756
146.00 €

Radio Accessories for bi.linked

Our bi.linked wireless technology works on the basis of 128-bit encryption, such as is used in online banking.

At the same time, it works with a so-called rolling code, i.e. the code generated when the button is pressed changes with each actuation, making it virtually impossible to copy or decrypt the signal.

The radio technology is known exclusively to our engineers, and we also produce all our bi.linked radio products in our own factories.



You want your own labeling on our radio accessories?

Almost all of the following products are also available on request as a neutral variant or with your very own labeling.



bi.linked Hand Transmitter



bi.linked Push Button



bi.linked Code Switch



bi.linked universal station



bi.linked Module Receiver



bi.linked Universal Receiver

bi.linked Hand Transmitter



Article

Item no.	Description	Price
101106	Digital 564 4-channel mini hand transmitter, unidirectional, 868 MHz bi.linked	59.00 €
160383	Digital 564 4-channel mini hand transmitter, unidirectional, 868 MHz bi.linked, set of 10	552.00 €
160390	Digital 564 4-channel mini hand transmitter, unidirectional, 868 MHz bi.linked, set of 25	1323.00 €
160397	Digital 564 4-channel mini hand transmitter, unidirectional, 868 MHz bi.linked, set of 50	2474.00 €
101105	Digital 564 4-channel mini hand transmitter, unidirectional, 433 MHz bi.linked	59.00 €

Features

- 4 function keys for free assignment
- Signaling by red LED
- Eyelet for attachment to keychain or lanyard
- High security through 128-bit AES-encrypted radio transmission and constantly changing radio code (rolling code method)

Technical data

	Digital 564	
Number of freely programmable keys	4	
battery type	CR2032, 3 V	
Radio frequency	868 MHz	433 MHz
Radio technology	bi.linked	
Radio coding	Marantec	
Communication direction	Unidirectional	
Color	RAL 9005; RAL 9016	
Dimensions (WxHxD)[mm]	39x92x12	

bi.linked Hand Transmitter



Article

Item no.	Description	Price
101115	Digital 572 2-channel micro hand transmitter, unidirectional, 868 MHz bi.linked	54.00 €
160382	Digital 572 2-channel micro hand transmitter, unidirectional, 868 MHz bi.linked, set of 10	507.00 €
160389	Digital 572 2-channel micro hand transmitter, unidirectional, 868 MHz bi.linked, set of 25	1215.00 €
160396	Digital 572 2-channel micro hand transmitter, unidirectional, 868 MHz bi.linked, set of 50	2272.00 €
101114	Digital 572 2-channel micro hand transmitter, unidirectional, 433 MHz bi.linked	54.00 €

Features

- 2 function keys for free assignment
- Signaling by red LED
- Eyelet for attachment to keychain or lanyard
- High security through 128-bit AES-encrypted radio transmission and constantly changing radio code (rolling code method)

Technical data

	Digital 572	
Number of freely programmable keys	2	
battery type	CR2032, 3 V	
Radio frequency	868 MHz	433 MHz
Radio technology	bi.linked	
Radio coding	Marantec	
Communication direction	Unidirectional	
Color	RAL 9005; RAL 9016	
Dimensions (WxHxD)[mm]	39x60x12	

bi.linked Hand Transmitter



Article

Item no.	Description	Price
114484	Digital 506 10-channel maxi hand transmitter, unidirectional, 868 MHz bi.linked	70.00 €
114485	Digital 506 10-channel maxi hand transmitter, unidirectional, 433 MHz bi.linked	70.00 €

Features

- 10 function keys for free assignment
- Signaling by red LED
- High security through 128-bit AES-encrypted radio transmission and constantly changing radio code (rolling code method)

Technical data

	Digital 506	
Number of freely programmable keys	10	
battery type	CR2032, 3 V	
Radio frequency	868 MHz	433 MHz
Radio technology	bi.linked	
Radio coding	Marantec	
Communication direction	Unidirectional	
Color	RAL 9003; RAL 9005	
Dimensions (WxHxD)[mm]	39x112x17	

bi.linked Hand Transmitter



Digital 517



Digital 518

Article

Item no.	Description	Price
123052	Digital 517 999-channel multi-hand transmitter, unidirectional, 868 MHz bi.linked	119.00 €
123062	Digital 518 999-channel multi-hand transmitter with direction keys, unidirectional, 868 MHz bi.linked	119.00 €

Features

Digital 517

- 999 channels for free assignment
- Operation by entering the channel number and pressing the enter key (IMPULSE)
- Indication by LC display
- High security through 128-bit AES-encrypted radio transmission and constantly changing radio code (rolling code method)

Digital 518

- 999 channels for free assignment
- Operation by entering the channel number and pressing a direction key (OPEN/STOP/CLOSE)
- Indication by LC display
- High security through 128-bit AES-encrypted radio transmission and constantly changing radio code (rolling code method)

Technical data

	Digital 517	Digital 518
Number of freely programmable keys	999	
battery type	CR2032, 3 V	
Radio frequency	868 MHz	
Radio technology	bi.linked	
Radio coding	Marantec	
Communication direction	Unidirectional	
Color	LY7P (metallic titanium gray)	
Dimensions (WxHxD) [mm]	60x150x22	

Accessories for Hand Transmitters

Wall holder



Wall mount mini

for mini hand transmitters Digital 564, 663, 382 and 384, 5 pieces

For Digital 564, 663, 382 and 384

140224
25.00 €



Wall mount multi

for Digital 517, 518, 317 and 318 multi-hand transmitters

For Digital 517, 518, 317 and 318

72819
15.00 €

Accessories for Hand Transmitters

bi.linked Push Button



Article

Item no.	Description	Price
161336	Digital 520 2-channel radio indoor push button, unidirectional, 868 MHz bi.linked	36.00 €

Features

- 2 function keys for free assignment
- Signaling by red LED
- High security through 128-bit AES-encrypted radio transmission and constantly changing radio code (rolling code method)

Technical data

	Digital 520
Number of freely programmable keys	2
battery type	CR2032, 3 V
Channels	2
Radio frequency	868 MHz
Radio technology	bi.linked
Radio coding	Marantec
Communication direction	Unidirectional
Protection class	IP20
Color	Black
Dimensions (WxHxD)[mm]	80x80x25

bi.linked Code Switch



Article

Item no.	Description	Price
101149	Digital 525 4-channel radio code push button with 3 permanent PINs, one temporary PIN and one light button, unidirectional, 868 MHz bi.linked	67.00 €
101148	Digital 525 4-channel radio code push button with 3 permanent PINs, one temporary PIN and one light button, unidirectional, 433 MHz bi.linked	67.00 €

Features

- Operation by entering a 4-digit PIN
- 3 freely selectable user PINs for free assignment with functions
- 1 freely selectable temporary user PIN (can be used 3 times)
- 1 changeable master PIN for management
- 1 function key for free assignment
- Signaling by red LED
- High security through 128-bit AES-encrypted radio transmission and constantly changing radio code (rolling code method)

Technical data

	Digital 525	
Number of permanent PIN codes	3	
Number of temporary PIN codes	1	
battery type	AAA, 1.5 V	
Channels	4	
Radio frequency	868 MHz	433 MHz
Radio technology	bi.linked	
Radio coding	Marantec	
Communication direction	Unidirectional	
Protection class	IP54	
Color	RAL 9006	
Dimensions (WxHxD)[mm]	80x102x35	

bi.linked Code Switch



Article

Item no.	Description	Price
101163	Digital 526 4-channel radio code push button with 3 permanent PINs, one temporary PIN, one light button and one protection cover, unidirectional, 868 MHz bi.linked	80.00 €
101162	Digital 526 4-channel radio code push button with 3 permanent PINs, one temporary PIN, one light button and one protection cover, unidirectional, 433 MHz bi.linked	80.00 €

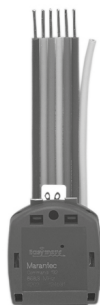
Features

- Operation by entering a 4-digit PIN
- 3 freely selectable user PINs for free assignment with functions
- 1 freely selectable temporary user PIN (can be used 3 times)
- 1 changeable master PIN for management
- Signaling by red LED
- Sliding cover protects the keypad from dirt
- High security through 128-bit AES-encrypted radio transmission and constantly changing radio code (rolling code method)

Technical data

	Digital 526	
Number of permanent PIN codes	3	
Number of temporary PIN codes	1	
battery type	AAA, 1.5 V	
Channels	4	
Radio frequency	868 MHz	433 MHz
Radio technology	bi.linked	
Radio coding	Marantec	
Communication direction	Unidirectional	
Protection class	IP54	
Color	RAL 9006	
Dimensions (WxHmin./Hmax.xD)[mm]	81x118/189x35	

bi.linked universal station



Article

Item no.	Description	Price
122036	Digital 890 4-channel flush-mounted transmitter, unidirectional, 868 MHz bi.linked	52.00 €

Features

- 4 potential-free inputs for connection for e.g. push buttons - wired pushbuttons thus become wireless push buttons
- High security through 128-bit AES-encrypted radio transmission and constantly changing radio code (rolling code method)

Technical data

	Digital 890
battery type	CR2032, 3 V
Inputs	4 potential-free inputs for push buttons (NO)
Channels	4
Radio frequency	868 MHz
Radio technology	bi.linked
Radio coding	Marantec
Communication direction	Unidirectional
Protection class	IP20
Dimensions (WxHxD)[mm]	37x30x10

bi.linked Module Receiver



Article

Item no.	Description	Price
101180	Digital 921 Module receiver with 200 memory locations, bidirectional, 868 MHz bi.linked	67.00 €
101179	Digital 921 Module receiver with 200 memory locations, bidirectional, 433 MHz bi.linked	67.00 €

Area of use

For Comfort 260 (accu/speed), 270 (speed), 280, 360, 370, 380 and 390 (plus) from control box R10. For Control x.52, CS 255 AC and VTA

Features

- IMPULSE function
- Generous memory for up to 200 keys
- Directly pluggable into the control system
- Compact size

Technical data

	Digital 921	
Operating voltage [V]	5 V-DC	
Rated current [A]	0.002	
Radio frequency	868 MHz	433 MHz
Radio technology	bi.linked	
Radio coding	Marantec	
Communication direction	Bidirectional	
Number of memory locations	200	
Protection class	IP00	
Dimensions (WxHxD)[mm]	23x7.7x48.4	

bi.linked Module Receiver



Article

Item no.	Description	Price
101185	Digital 941 Module receiver with 200 memory locations and magnetic base antenna with 5 m cable, bidirectional, 868 MHz bi.linked	79.00 €
101184	Digital 941 Module receiver with 200 memory locations and magnetic base antenna with 5 m cable, bidirectional, 433 MHz bi.linked	79.00 €

Area of use

For Comfort 260 (accu/speed), 270 (speed), 280, 360, 370, 380 and 390 (plus) from control box R10. For Control x.52, x.82, CS 255 AC and VTA

Features

Digital 941

- IMPULSE function
- Generous memory for up to 200 keys
- Directly pluggable into the control system
- Compact size

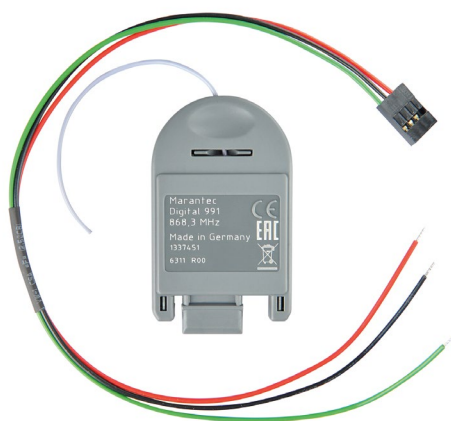
Magnetic foot antenna

- Mounting of the weatherproof antenna with magnetic foot on the housing or door/gate or by screwing using the enclosed wall bracket

Technical data

	Digital 941	Magnetic foot antenna
Connection type	Pluggable	Conventional
Operating voltage [V]	5 V-DC	
Rated current [A]	0.002	
Radio frequency	868 MHz	
Radio technology	bi.linked	
Radio coding	Marantec	
Communication direction	Bidirectional	
Number of memory locations	200	
Protection class	IP00	IP65
Dimensions (WxHxD)[mm]	23x7.7x48.4	27x95x27

bi.linked Universal Receiver



Article

Item no.	Description	Price
118726	Digital 991 Module receiver with 200 memory locations and 1 open collector output, 24 V, unidirectional, 868 MHz bi.linked	68.00 €
118727	Digital 991 Module receiver with 200 memory locations and 1 open collector output, 24 V, unidirectional, 433 MHz bi.linked	68.00 €

Area of use

For CS 320. For other makes (in conjunction with the enclosed connection cable)

Features

- 1 channel for free assignment
- 1 potential-free relay contact for switching an electrical device, e.g. impulse input of a gate control system
- IMPULSE function
- Generous memory for up to 200 keys
- Compact size

Technical data

	Digital 991	
Operating voltage [V]	12-24 V-DC	
Outputs	1 Open collector output (PNP)	
Contact type	1 NO	
Contact load (max.)	24 V-DC/0.1 A	
Channels	1	
Radio frequency	868 MHz	433 MHz
Radio technology	bi.linked	
Radio coding	Marantec	
Communication direction	Unidirectional	
Number of memory locations	200	
Protection class	IP00	
Dimensions (WxHxD)[mm]	37x53x13	

bi.linked Universal Receiver



Article

Item no.	Description	Price
105257	Digital 992 IP20 2-channel universal receiver with 100 memory locations per relay, 24 V, IP20, unidirectional, 868 MHz bi.linked	60.00 €
160386	Digital 992 IP20 2-channel universal receiver with 100 memory locations per relay, 24 V, IP20, unidirectional, 868 MHz bi.linked, set of 10	552.00 €
160393	Digital 992 IP20 2-channel universal receiver with 100 memory locations per relay, 24 V, IP20, unidirectional, 868 MHz bi.linked, 25-piece set	1323.00 €
160400	Digital 992 IP20 2-channel universal receiver with 100 memory locations per relay, 24 V, IP20, unidirectional, 868 MHz bi.linked, set of 50	2474.00 €
114462	Digital 992 IP20 2-channel universal receiver with 100 memory locations per relay, 24 V, IP20, unidirectional, 433 MHz bi.linked	60.00 €

Features

- Compact size
- 2 channels for free assignment
- 2 potential-free relay contacts for switching electrical devices, e.g. impulse input of a gate control system
- IMPULSE or ON/OFF function separately adjustable for each channel
- Generous memory for up to 100 keys per channel
- Connection with conventional wiring for external push buttons for direct switching of each relay

Technical data

	Digital 992 IP20	
Operating voltage [V]	12-24 V-AC; 12-24 V-DC	
Inputs	2 inputs for potential-free push buttons (NO)	
Outputs	2 potential-free relay contacts (CO)	
Contact type	2 CO	
Contact load (max.)	24 V-AC/1 A/24 VA; 30 V-DC/1 A/30 W	
Radio frequency	868 MHz	433 MHz
Radio technology	bi.linked	
Radio coding	Marantec	
Communication direction	Unidirectional	
Number of memory locations	100	
Protection class	IP20	
Dimensions (WxHxD) [mm]	70x64x35	

bi.linked Universal Receiver



Article

Item no.	Description	Price
116881	Digital 992 IP65 2-channel universal receiver with 100 memory locations per relay, 24 V, IP65, unidirectional, 868 MHz bi.linked	94.00 €
116913	Digital 992 IP65 2-channel universal receiver with 100 memory locations per relay, 24 V, IP65, unidirectional, 433 MHz bi.linked	94.00 €

Features

- Weather resistant housing
- 2 channels for free assignment
- 2 potential-free relay contacts for switching electrical devices, e.g. impulse input of a gate control system
- IMPULSE or ON/OFF function separately adjustable for each channel
- Generous memory for up to 100 keys per channel
- Connection with conventional wiring for external push buttons for direct switching of each relay

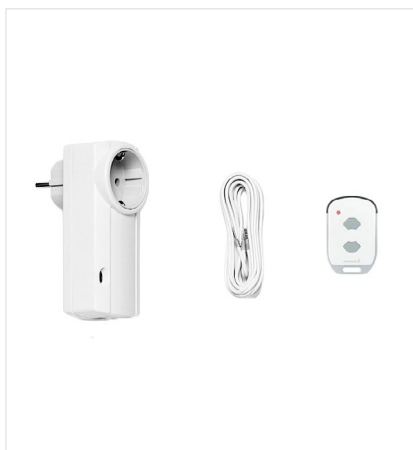
Technical data

	Digital 992 IP65	
Operating voltage [V]	12-24 V-AC; 12-24 V-DC	
Inputs	2 inputs for potential-free push buttons (NO)	
Outputs	2 potential-free relay contacts (CO)	
Contact type	2 CO	
Contact load (max.)	24 V-AC/1 A/24 VA; 30 V-DC/1 A/30 W	
Radio frequency	868 MHz	433 MHz
Radio technology	bi.linked	
Radio coding	Marantec	
Communication direction	Unidirectional	
Number of memory locations	100	
Protection class	IP65	
Dimensions (WxHxD)[mm]	70x113x35	

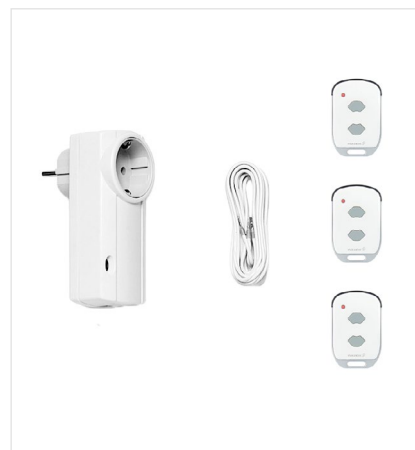
bi.linked Universal Receiver



Digital 993



Digital 993 conversion set



Digital 993 conversion set

Article

Item no.	Description	Price
122715	Digital 993 1-channel socket receiver with 200 memory locations, Schuko type F, unidirectional, 868 MHz bi.linked	101.00 €
122798	Digital 993 conversion set consisting of Digital 993 EU (type F) and Digital 572, unidirectional, 868 MHz bi.linked	155.00 €
158107	Digital 993 conversion set consisting of Digital 993 EU (type F) and 3 Digital 572, unidirectional, 868 MHz bi.linked	263.00 €

Features

- 1 channel for free assignment
- 1 potential-free relay contact for switching an electrical device, e.g. impulse input of a gate control system
- IMPULSE function
- Generous memory for up to 200 keys
- Power supply via the mains socket of the operator without blocking it
- Easy conversion of third-party operators to Marantec hand transmitters or to change the radio frequency

Technical data

	Digital 993
Operating voltage [V]	230 V/1~
Outputs	1 potential-free relay contact (NO)
Contact type	1 NO
Contact load (max.)	24 V-DC/1 A
Channels	1
Radio technology	bi.linked
Radio coding	Marantec
Communication direction	Unidirectional
Number of memory locations	200
Protection class	IP20
Dimensions (WxHxD)[mm]	50x120x75

bi.linked Universal Receiver



Article

Item no.	Description	Price
160280	Digital 994 1-channel flush-mounted receiver with 200 memory locations and one potential-loaded relay, 230 V, unidirectional, 868 MHz bi.linked	62.00 €

Features

- 1 channel for free assignment
- 1 potential-loaded relay contact for direct switching of an electrical device, e.g. outdoor lamp
- ON/OFF function
- Generous memory for up to 200 keys
- Compact size

Technical data

	Digital 994
Operating voltage [V]	230 V/1~
Outputs	1 potential-free relay contact (N.O.)
Contact type	1 NO
Contact load (max.)	230 V-AC/10 A/2,300 VA
Channels	1
Radio frequency	868 MHz
Radio technology	bi.linked
Radio coding	Marantec
Communication direction	Unidirectional
Number of memory locations	200
Protection class	IP00
Dimensions (WxHxD)[mm]	48x48x25

Accessories for Universal Receivers



Magnetic foot antenna

Magnetic foot antenna with 5 m cable, conventional, 868 MHz

For Digital 992, 711, 712 and 713

102957

15.00 €

Radio Accessories for Multi-Bit

Multi-Bit is a proven and very secure radio system that Marantec has developed for controlling operators. The signals from the hand transmitters, code push buttons and co. to the operator are reliably transmitted via 48-bit encryption.

The use of a total of around 70 million different transmission codes ensures special security - each operator uses a different code. If, for example, a hand transmitter is lost, a new code can easily be programmed for all other devices. In this way, the lost hand transmitter loses its function if a stranger finds it.

Multi-Bit is a unidirectional radio system, which means that communication only goes in one direction: the hand transmitter sends a command, the operator executes it and opens the door, for example.



You want your own labeling on our radio accessories?

Almost all of the following products are also available on request as a neutral variant or with your very own labeling.



Multi-Bit Hand Transmitter



Multi-Bit Push Button



Multi-Bit Code Push Button



Multi-Bit Universal Transmitter



Multi-Bit Module Antennas



Multi-Bit Universal Receiver

Multi-Bit Hand Transmitter



Article

Item no.	Description	Price
122419	Digital 382 2-channel mini hand transmitter, unidirectional, 868 MHz Multi-Bit	49.00 €
160380	Digital 382 2-channel mini hand transmitter, unidirectional, 868 MHz Multi-Bit, set of 10	463.00 €
160387	Digital 382 2-channel mini hand transmitter, unidirectional, 868 MHz Multi-Bit, set of 25	1107.00 €
160394	Digital 382 2-channel mini hand transmitter, unidirectional, 868 MHz Multi-Bit, set of 50	2070.00 €
122421	Digital 382 2-channel mini hand transmitter, unidirectional, 433 MHz Multi-Bit	49.00 €

Features

- 2 function keys for free assignment
- Signaling by red LED
- Eyelet for attachment to keychain or lanyard
- Simple and direct copying of a hand transmitter key to another hand transmitter by means of plug-in contacts

Technical data

	Digital 382	
Number of freely programmable keys	2	
battery type	CR2032, 3 V	
Radio frequency	868 MHz	433 MHz
Radio technology	Multi-Bit	
Radio coding	Marantec	
Communication direction	Unidirectional	
Color	RAL 7011; RAL 7016	RAL 7011
Dimensions (WxHxD)[mm]	39x86x12	

Multi-Bit Hand Transmitter



Article

Item no.	Description	Price
122459	Digital 384 4-channel mini hand transmitter, unidirectional, 868 MHz Multi-Bit	51.00 €
160381	Digital 384 4-channel mini hand transmitter, unidirectional, 868 MHz Multi-Bit, set of 10	473.00 €
160388	Digital 384 4-channel mini hand transmitter, unidirectional, 868 MHz Multi-Bit, set of 25	1134.00 €
160395	Digital 384 4-channel mini hand transmitter, unidirectional, 868 MHz Multi-Bit, set of 50	2121.00 €
122461	Digital 384 4-channel mini hand transmitter, unidirectional, 433 MHz Multi-Bit	51.00 €

Features

- 4 function keys for free assignment
- Signaling by red LED
- Eyelet for attachment to keychain or lanyard
- Simple and direct copying of a hand transmitter key to another hand transmitter by means of plug-in contacts

Technical data

	Digital 384	
Number of freely programmable keys	4	
battery type	CR2032, 3 V	
Radio frequency	868 MHz	433 MHz
Radio technology	Multi-Bit	
Radio coding	Marantec	
Communication direction	Unidirectional	
Color	RAL 7011; RAL 7016	RAL 7011
Dimensions (WxHxD)[mm]	39x86x12	

Multi-Bit Hand Transmitter



Article

Item no.	Description	Price
165103	Digital 392 2-channel micro hand transmitter, unidirectional, 868 MHz Multi-Bit	52.00 €
168172	Digital 392 2-channel micro hand transmitter, unidirectional, 868 MHz Multi-Bit, set of 25	1188.00 €
168173	Digital 392 2-channel micro hand transmitter, unidirectional, 868 MHz Multi-Bit, set of 50	2222.00 €
165099	Digital 392 2-channel micro hand transmitter, unidirectional, 433 MHz Multi-Bit	52.00 €

Features

- 2 function keys for free assignment
- Signaling by red LED
- Eyelet for attachment to keychain or lanyard
- Simple and direct copying of a hand transmitter key to another hand transmitter by means of plug-in contacts

Technical data

	Digital 392	
Number of freely programmable keys	2	
battery type	CR2032, 3 V	
Radio frequency	868 MHz	433 MHz
Radio technology	Multi-Bit	
Radio coding	Marantec	
Communication direction	Unidirectional	
Color	RAL 7011; RAL 7016	RAL 7011
Dimensions (WxHxD)[mm]	39x54x14	

Multi-Bit Hand Transmitter



Article

Item no.	Description	Price
80474	Digital 323 3-channel car transmitter, 12 V, unidirectional, 868 MHz Multi-Bit	77.00 €
81788	Digital 323 3-channel car transmitter, 12 V, unidirectional, 433 MHz Multi-Bit	77.00 €

Features

- 3 function keys for free assignment
- Signaling by red LED
- Maintenance-free supply via 12 V vehicle socket
- Simple and direct copying of a hand transmitter key to another hand transmitter by means of plug-in contacts

Technical data

	Digital 323	
Number of freely programmable keys	3	
battery type	Without	
Radio frequency	868 MHz	433 MHz
Radio technology	Multi-Bit	
Radio coding	Marantec	
Communication direction	Unidirectional	
Color	RAL 7011; RAL 7016	
Dimensions (WxHxD)[mm]	37x37x64	

Multi-Bit Hand Transmitter



Article

Item no.	Description	Price
82499	Digital 306 10-channel maxi hand transmitter, unidirectional, 868 MHz Multi-Bit	77.00 €
82501	Digital 306 10-channel maxi hand transmitter, unidirectional, 433 MHz Multi-Bit	77.00 €

Features

- 10 function keys for free assignment
- Signaling by red LED
- Simple and direct copying of a hand transmitter key to another hand transmitter by means of plug-in contacts

Technical data

	Digital 306	
Number of freely programmable keys	10	
battery type	CR2032, 3 V	
Radio frequency	868 MHz	433 MHz
Radio technology	Multi-Bit	
Radio coding	Marantec	
Communication direction	Unidirectional	
Color	RAL 7011; RAL 7016	RAL 7011
Dimensions (WxHxD)[mm]	38x110x14	

Multi-Bit Hand Transmitter



Digital 317



Digital 318

Article

Item no.	Description	Price
88990	Digital 317 999-channel multi-hand transmitter, unidirectional, 868 MHz Multi-Bit	119.00 €
88734	Digital 317 999-channel multi-hand transmitter, unidirectional, 433 MHz Multi-Bit	119.00 €
89214	Digital 318 999-channel multi hand transmitter with direction keys, unidirectional, 868 MHz Multi-Bit	119.00 €
89000	Digital 318 999-channel multi hand transmitter with direction keys, unidirectional, 433 MHz Multi-Bit	119.00 €

Features

Digital 317

- 999 channels for free assignment
- Operation by entering the channel number and pressing the enter key (IMPULSE)
- Indication by LC display
- Simple and direct copying of a hand transmitter key to another hand transmitter by means of plug-in contacts

Digital 318

- 999 channels for free assignment
- Operation by entering the channel number and pressing a direction key (OPEN/STOP/CLOSE)
- Indication by LC display
- Simple and direct copying of a hand transmitter key to another hand transmitter by means of plug-in contacts

Technical data

	Digital 317		Digital 318	
Number of freely programmable keys	999			
battery type	CR2032, 3 V			
Radio frequency	868 MHz	433 MHz	868 MHz	433 MHz
Radio technology	Multi-Bit			
Radio coding	Marantec			
Communication direction	Unidirectional			
Color	LY7P (metallic titanium gray)			
Dimensions (WxHxD) [mm]	60x150x22			

Accessories for Hand Transmitters

Wall Holders



Wall mount mini

for mini hand transmitters Digital 564, 663, 382 and 384, 5 pieces

For Digital 564, 663, 382 and 384

140224
25.00 €



Wall mount multi

for Digital 517, 518, 317 and 318 multi-hand transmitters

For Digital 517, 518, 317 and 318

72819
15.00 €



Multi-Bit Push Button



Article

Item no.	Description	Price
64812	Command 131 2-channel radio interior push button with 2 inputs for key switch, unidirectional, 868 MHz Multi-Bit	58.00 €
65694	Command 131 2-channel radio indoor push button with 2 inputs for key switch, unidirectional, 433 MHz Multi-Bit	58.00 €

Features

- 2 function keys for free assignment
- Connection with conventional wiring for external push buttons for direct switching of each function key
- Signaling by red LED
- Simple and direct copying of a hand transmitter key to another hand transmitter by means of plug-in contacts

Technical data

	Command 131	
Number of freely programmable keys	2	
battery type	CR2032, 3 V	
Inputs	2 inputs for push buttons	
CHANNEL	2	
Radio frequency	868 MHz	433 MHz
Radio technology	Multi-Bit	
Radio coding	Marantec	
Communication direction	Unidirectional	
Protection class	IP20	
Color	RAL 7011; RAL 7016	
Dimensions (WxHxD)[mm]	80x80x27	

Multi-Bit Push Button



Article

Item no.	Description	Price
161310	Command 133 2-channel radio indoor push button, unidirectional, 868 MHz Multi-Bit	46.00 €

Features

- 2 function keys for free assignment
- Signaling by red LED
- Simple and direct copying of a hand transmitter key to another hand transmitter by means of plug-in contacts

Technical data

	Command 133
Number of freely programmable keys	2
battery type	CR2032, 3 V
Channels	2
Radio frequency	868 MHz
Radio technology	Multi-Bit
Radio coding	Marantec
Communication direction	Unidirectional
Protection class	IP20
Color	RAL 9005
Dimensions (WxHxD)[mm]	80x80x25

Multi-Bit Code Push Button



Article

Item no.	Description	Price
72873	Command 222 4-channel radio code push button for 3 permanent PINs, one temporary PIN and one light button, vandalism-proof, unidirectional, 868 MHz Multi-Bit	174.00 €
75167	Command 222 4-channel radio code push button for 3 permanent PINs, one temporary PIN and one light button, vandalism-proof, unidirectional, 433 MHz Multi-Bit	174.00 €

Features

- Operation by entering a 4-digit PIN
- 3 freely selectable user PINs for free assignment with functions
- 1 freely selectable temporary user PIN (can be used 3 times)
- 1 changeable master PIN for management
- 1 key for querying the gate position
- Metal keys and security screw protect against vandalism

Technical data

	Command 222	
Number of permanent PIN codes	3	
Number of temporary PIN codes	1	
battery type	Block, 9 V	
Channels	4	
Radio frequency	868 MHz	433 MHz
Radio technology	Multi-Bit	
Radio coding	Marantec	
Communication direction	Unidirectional	
Protection class	IP65	
Color	RAL 9006	
Dimensions (WxHxD)[mm]	60x142x30	

Multi-Bit Code Push Button



Article

Item no.	Description	Price
69533	Command 231 4-channel radio code push button with 3 permanent PINs, one temporary PIN, one light button and one protection cover, unidirectional, 868 MHz Multi-Bit	110.00 €
69534	Command 231 4-channel radio code push button with 3 permanent PINs, one temporary PIN, one light button and one protection cover, unidirectional, 433 MHz Multi-Bit	110.00 €

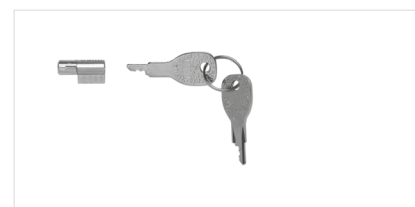
Features

- Operation by entering a 4-digit PIN
- 3 freely selectable user PINs for free assignment with functions
- 1 freely selectable temporary user PIN (can be used 3 times)
- 1 function key for free assignment
- Signaling by red LED
- Hinged cover protects the keypad from dirt

Technical data

	Command 231	
Number of permanent PIN codes	3	
Number of temporary PIN codes	1	
battery type	CR2032, 3 V	
Channels	4	
Radio frequency	868 MHz	433 MHz
Radio technology	Multi-Bit	
Radio coding	Marantec	
Communication direction	Unidirectional	
Protection class	IP54	
Color	LY7P (metallic titanium gray)	
Dimensions (WxHxD)[mm]	70x198x48	
Dimensions (WxHmin./Hmax.xD)[mm]	70x110/198x48	

Accessories for Code Switches



Mortise lock

with 2 keys to secure the protective cover for Command 231

For Command 231

97908

8.20 €

Multi-Bit Universal Transmitter



Article

Item no.	Description	Price
70028	Command 132 4-channel flush-mounted transmitter, unidirectional, 868 MHz Multi-Bit	53.00 €
70710	Command 132 4-channel flush-mounted transmitter, unidirectional, 433 MHz Multi-Bit	53.00 €

Features

- 4 potential-free inputs for connection for e.g. push buttons - wired pushbuttons thus become wireless push buttons

Technical data

	Command 132	
battery type	CR2032, 3 V	
Inputs	4 potential-free inputs for push buttons (NO)	
Channels	4	
Radio frequency	868 MHz	433 MHz
Radio technology	Multi-Bit	
Radio coding	Marantec	
Communication direction	Unidirectional	
Protection class	IP20	
Dimensions (WxHxD)[mm]	36x30x10	

Multi-Bit Module Antennas



Article

Item no.	Description	Price
101966	Digital 168 Module antenna with 200 memory locations, unidirectional, 868 MHz Multi-Bit	68.00 €
102049	Digital 168 Module antenna with 200 memory locations, unidirectional, 433 MHz Multi-Bit	68.00 €

Area of use

For Comfort 260 (accu/speed), 270 (speed), 280, 360, 370, 380, 390 (plus), Control x.52, VTA and CS 255 AC

Features

- IMPULSE function
- Directly pluggable into the control system
- Compact size

Technical data

	Digital 168	
Operating voltage [V]	5 V-DC	
Rated current [A]	0.002	
Channels	1	
Radio frequency	868 MHz	433 MHz
Radio technology	Multi-Bit	
Radio coding	Marantec	
Communication direction	Unidirectional	
Protection class	IP00	
Dimensions (WxHxD)[mm]	23x7.7x48.4	

Multi-Bit Module Antennas



Article

Item no.	Description	Price
102053	Digital 179 Module antenna with 200 memory locations and magnetic base antenna with 5 m cable, unidirectional, 868 MHz Multi-Bit	81.00 €
102051	Digital 179 Module antenna with 200 memory locations and magnetic base antenna with 5 m cable, unidirectional, 433 MHz Multi-Bit	81.00 €

Area of use

For Comfort 260 (accu/speed), 270 (speed), 280, 360, 370, 380, 390 (plus), Control x.52, x.82, VTA and CS 255 AC

Features

Digital 179

- IMPULSE function
- Directly pluggable into the control system
- Compact size

Magnetic foot antenna

- Mounting of the weatherproof antenna with magnetic foot on the housing or door/gate or by screwing using the enclosed wall bracket

Technical data

	Digital 179	Magnetic foot antenna
Operating voltage [V]	5 V-DC	
Rated current [A]	0.002	
Channels	1	
Radio frequency	868 MHz	
Radio technology	Multi-Bit	
Radio coding	Marantec	
Communication direction	Unidirectional	
Protection class	IP00	IP65
Dimensions (WxHxD) [mm]	23x7.7x48.4	27x95x27

Multi-Bit Universal Receiver



Article

Item no.	Description	Price
104962	Digital 339.2 1-channel universal receiver with one relay, IP20, unidirectional, 868 MHz Multi-Bit	59.00 €
160385	Digital 339.2 1-channel universal receiver with one relay, IP20, unidirectional, 868 MHz Multi-Bit, set of 10	541.00 €
160392	Digital 339.2 1-channel universal receiver with one relay, IP20, unidirectional, 868 MHz Multi-Bit, set of 25	1296.00 €
160399	Digital 339.2 1-channel universal receiver with one relay, IP20, unidirectional, 868 MHz Multi-Bit, set of 50	2424.00 €
104958	Digital 339.2 1-channel universal receiver with one relay, IP20, unidirectional, 433 MHz Multi-Bit	59.00 €

Features

- 1 channel for free assignment
- 1 potential-free relay contact for switching an electrical device, e.g. impulse input of a gate control system
- IMPULSE or ON/OFF function separately adjustable for each channel
- Connection with conventional wiring for external push buttons for direct switching of each relay
- Compact size

Technical data

	Digital 339.2	
Operating voltage [V]	12-24 V-AC; 12-24 V-DC	
Inputs	1 input for potential-free push buttons (NO)	
Outputs	1 potential-free relay contact (CO)	
Contact type	1 CO	
Contact load (max.)	24 V-AC/1 A/24 VA; 30 V-DC/1 A/30 W	
Channels	1	
Radio frequency	868 MHz	433 MHz
Radio technology	Multi-Bit	
Radio coding	Marantec	
Communication direction	Unidirectional	
Number of memory locations	1	
Protection class	IP20	
Dimensions (WxHxD) [mm]	70x64x35	

Multi-Bit Universal Receiver



Article

Item no.	Description	Price
104963	Digital 340.2 1-channel universal receiver with one relay, IP65, unidirectional, 868 MHz Multi-Bit	96.00 €
104959	Digital 340.2 1-channel universal receiver with one relay, IP65, unidirectional, 433 MHz Multi-Bit	96.00 €

Features

- 1 channel for free assignment
- 1 potential-free relay contact for switching an electrical device, e.g. impulse input of a gate control system
- IMPULSE or ON/OFF function separately adjustable for each channel
- Connection with conventional wiring for external push buttons for direct switching of each relay
- Weather resistant housing

Technical data

	Digital 340.2	
Operating voltage [V]	12-24 V-AC; 12-24 V-DC	
Inputs	1 input for potential-free push buttons (NO)	
Outputs	1 potential-free relay contact (CO)	
Contact type	1 CO	
Contact load (max.)	24 V-AC/1 A/24 VA; 30 V-DC/1 A/30 W	
Channels	1	
Radio frequency	868 MHz	433 MHz
Radio technology	Multi-Bit	
Radio coding	Marantec	
Communication direction	Unidirectional	
Number of memory locations	1	
Protection class	IP65	
Dimensions (WxHxD) [mm]	70x113x35	

Multi-Bit Universal Receiver



Digital 343.2



Digital 343.2 conversion set

Article

Item no.	Description	Price
104964	Digital 343.2 2-channel universal receiver with 2 relays, 24 V, IP20, unidirectional, 868 MHz Multi-Bit	68.00 €
104960	Digital 343.2 2-channel universal receiver with 2 relays, 24 V, IP20, unidirectional, 433 MHz Multi-Bit	68.00 €
78074	Digital 343.2 conversion set consisting of Digital 343.2 and Digital 384, unidirectional, 868 MHz multi-bit	115.00 €

Features

- 2 channels for free assignment
- 2 potential-free relay contacts for switching electrical devices, e.g. impulse input of a gate control system
- IMPULSE or ON/OFF function separately adjustable for each channel
- Connection with conventional wiring for external push buttons for direct switching of each relay
- Compact size

Technical data

	Digital 343.2	
Operating voltage [V]	12-24 V-AC; 12-24 V-DC	
Inputs	2 inputs for potential-free push buttons (NO)	
Outputs	2 potential-free relay contacts (CO)	
Contact type	2 CO	
Contact load (max.)	24 V-AC/1 A/24 VA; 30 V-DC/1 A/30 W	
Channels	2	
Radio frequency	868 MHz	433 MHz
Radio technology	Multi-Bit	
Radio coding	Marantec	
Communication direction	Unidirectional	
Number of memory locations	2	
Protection class	IP20	
Dimensions (WxHxD) [mm]	70x64x35	

Multi-Bit Universal Receiver



Article

Item no.	Description	Price
104966	Digital 344.2 2-channel universal receiver with 2 relays, 24 V, IP65, unidirectional, 868 MHz Multi-Bit	107.00 €
104961	Digital 344.2 2-channel universal receiver with 2 relays, 24 V, IP65, unidirectional, 433 MHz Multi-Bit	107.00 €

Features

- 2 channels for free assignment
- 2 potential-free relay contacts for switching electrical devices, e.g. impulse input of a gate control system
- IMPULSE or ON/OFF function separately adjustable for each channel
- Connection with conventional wiring for external push buttons for direct switching of each relay
- Weather resistant housing

Technical data

	Digital 344.2	
Operating voltage [V]	12-24 V-AC; 12-24 V-DC	
Inputs	2 inputs for potential-free push buttons (NO)	
Outputs	2 potential-free relay contacts (CO)	
Contact type	2 CO	
Contact load (max.)	24 V-AC/1 A/24 VA; 30 V-DC/1 A/30 W	
Channels	2	
Radio frequency	868 MHz	433 MHz
Radio technology	Multi-Bit	
Radio coding	Marantec	
Communication direction	Unidirectional	
Number of memory locations	2	
Protection class	IP65	
Dimensions (WxHxD) [mm]	70x113x35	

Multi-Bit Universal Receiver



Article

Item no.	Description	Price
65654	Digital 361 1-channel flush-mounted receiver with one potential relay, 230 V, unidirectional, 868 MHz Multi-Bit	62.00 €

Features

- 1 channel for free assignment
- 1 potential-loaded relay contact for direct switching of an electrical device, e.g. outdoor lamp
- ON/OFF function
- Compact size

Technical data

	Digital 361	Digital 353
Operating voltage [V]	230 V/1~	
Outputs	1 potential-loaded relay contact (NO)	2 potential-free relay contacts (CO)
Contact type	1 NO	2 CO
Contact load (max.)	230 V/6 A/1,380 VA	230 V-AC/16 A
Channels	1	2
Radio frequency	868 MHz	
Radio technology	Multi-Bit	
Radio coding	Marantec	
Communication direction	Unidirectional	
Number of memory locations	1	200
Protection class	IP40	IP66
Dimensions (WxHxD)[mm]	45x45x25	130x94x57

Multi-Bit Universal Receiver



Digital 371



Digital 371 conversion set



Article

Item no.	Description	Price
65652	Digital 371 1-channel socket receiver, Schuko type F, unidirectional, 868 MHz Multi-Bit	81.00 €
65653	Digital 371 1-channel socket receiver, Schuko type F, unidirectional, 433 MHz Multi-Bit	81.00 €
78073	Digital 371 conversion set consisting of Digital 371 EU (type F) and Digital 384, unidirectional, 868 MHz multi-bit	121.00 €

Features

- 1 channel for free assignment
- 1 potential-free relay contact for switching an electrical device, e.g. impulse input of a gate control system
- IMPULSE function
- Power supply via the mains socket of the operator without blocking it
- Easy conversion of third-party operators to Marantec hand transmitters or to change the radio frequency

Technical data

	Digital 371	
Operating voltage [V]	230 V/1~	
Outputs	1 potential-free relay contact (NO)	
Contact type	1 NO	
Contact load (max.)	24 V-DC/1A	
Channels	1	
Radio frequency	868 MHz	433 MHz
Radio technology	Multi-Bit	
Radio coding	Marantec	
Communication direction	Unidirectional	
Number of memory locations	1	
Protection class	IP20	
Dimensions (WxHxD)[mm]	50x120x75	



Radio Accessories for DM7S

DM7S is the latest and very secure radio system developed by Marantec for the management of larger installations.

The radio transmission is very secure thanks to a 128-bit encryption according to AES standard.

The code transmitted during use is different each time the button is pressed, so copying or decrypting the radio signal is almost impossible. The advantage of this radio system lies in the simple and convenient manageability of a large number of hand transmitters. The individual serial number on the back of the hand transmitter allows them to be managed with the help of Windows software.

If a hand transmitter is lost, a new replacement hand transmitter can be assigned with the help of the software and a programming device. Without special programming knowledge for the receiver or the gate control, the pre-programmed hand transmitter can be used immediately by the user after pressing any button within range of the gate system twice.



You want your own labeling on our radio accessories?

Almost all of the following products are also available on request as a neutral variant or with your very own labeling.



DM7S hand transmitter



DM7S Universal Receivers



DM7S Programmers



DM7S hand transmitter



Digital 702



Digital 704

Article

Item no.	Description	Price
164689	Digital 702 2-channel mini hand transmitter, unidirectional, 868 MHz DM7S, set of 10	564.00 €
164693	Digital 702 2-channel mini hand transmitter, unidirectional, 868 MHz DM7S, set of 50	2231.00 €
164690	Digital 704 4-channel mini hand transmitter, unidirectional, 868 MHz DM7S, set of 10	587.00 €
164694	Digital 704 4-channel mini hand transmitter, unidirectional, 868 MHz DM7S, set of 50	2466.00 €

Features

Digital 702

- 2 function keys for free assignment
- Signaling by red LED
- Eyelet for attachment to keychain or lanyard
- High security through 128-bit AES-encrypted radio transmission and constantly changing radio code (rolling code method)
- Easy and fast programming of a large number of hand transmitters

Digital 704

- 4 function keys for free assignment
- Signaling by red LED
- Eyelet for attachment to keychain or lanyard
- High security through 128-bit AES-encrypted radio transmission and constantly changing radio code (rolling code method)
- Easy and fast programming of a large number of hand transmitters

Technical data

	Digital 702	Digital 704
Number of freely programmable keys	2	4
battery type	CR2032, 3 V	
Radio frequency	868 MHz	
Radio technology	DM7S	
Radio coding	Marantec	
Communication direction	Unidirectional	
Color	RAL 9005	
Dimensions (WxHxD)[mm]	39x86x12	

DM7S hand transmitter



Article

Item no.	Description	Price
187993	Digital 706 10-channel maxi hand transmitter, unidirectional, 868 MHz DM7S, set of 10	1366.00 €
187994	Digital 706 10-channel maxi hand transmitter, unidirectional, 868 MHz DM7S, set of 50	5930.00 €

Features

- 10 function keys for free assignment
- Signaling by red LED
- High security through 128-bit AES-encrypted radio transmission and constantly changing radio code (rolling code method)
- Easy and fast programming of a large number of hand transmitters

Technical data

	Digital 706
Number of freely programmable keys	10
battery type	CR2032, 3 V
Radio frequency	868 MHz
Radio technology	DM7S
Radio coding	Marantec
Communication direction	Unidirectional
Color	RAL 9005
Dimensions (WxHxD)[mm]	39x112x17

DM7S Universal Receivers



Digital 711



Digital 712

Article

Item no.	Description	Price
164983	Digital 711 4-channel universal receiver with 2,000 memory locations and 4 relays, 24 V, IP54, unidirectional, 868 MHz DM7S	207.00 €
164984	Digital 712 4-channel universal receiver with 2,000 memory locations and 4 relays, 230 V, IP54, unidirectional, 868 MHz DM7S	207.00 €

Features

- 4 channels for free assignment
- 4 potential-free relay contacts for switching electrical devices, e.g. impulse input of a gate control system
- IMPULSE, ON/OFF or timer function (1 to 1,000 seconds) separately adjustable for each channel
- Control of additional electrical consumers, e.g. light
- Pluggable memory module for up to 2,000 hand transmitters
- Programming of the memory module is done with the help of the programmer and the computer software

Technical data

	Digital 711	Digital 712
Operating voltage [V]	24 V-AC; 24 V-DC	230 V/1~
Outputs	4 potential-free relay contacts (2 CO, 2 NO)	
Contact type	2 CO + 2 NO	
Contact load (max.)	230 V-AC/5 A	
Channels	4	
Radio frequency	868 MHz	
Radio technology	DM7S	
Radio coding	Marantec	
Communication direction	Unidirectional	
Number of memory locations	2,000	
Protection class	IP54	
Dimensions (WxHxD)[mm]	120x120x60	

DM7S Universal Receivers



Article

Item no.	Description	Price
165748	Digital 713 2-channel universal receiver with 2,000 memory locations and 2 relays, 24 V, IP20, unidirectional, 868 MHz DM7S	123.00 €

Features

- 2 channels for free assignment
- 2 potential-free relay contacts for switching electrical devices, e.g. impulse input of a gate control system
- IMPULSE, ON/OFF or timer function (1 to 1,000 seconds) separately adjustable for each channel
- Control of additional electrical consumers, e.g. light
- Pluggable memory module for up to 2,000 hand transmitters
- Programming of the memory module is done with the help of the programmer and the computer software
- Compact size

Technical data

	Digital 713
Operating voltage [V]	24 V-AC; 24 V-DC
Outputs	2 potential-free relay contacts (C0)
Contact type	2 C0
Contact load (max.)	24 V-DC/0.5 A
Channels	2
Radio frequency	868 MHz
Radio technology	DM7S
Radio coding	Marantec
Communication direction	Unidirectional
Number of memory locations	2,000
Protection class	IP20
Dimensions (WxHxD)[mm]	102x45x20

DM7S Programmers



Article

Item no.	Description	Price
160904	Digital 720 USB programmer for DM7S transmitter and receiver	798.00 €

Features

- Easy management of all hand transmitters and receivers of a large number of customers and objects
- Programming device and software in German and English for reading and writing memory modules and hand transmitters
- Write memory modules with hand transmitter serial numbers (initial programming without on-site appointment)
- Describe new hand transmitters with a virtual serial number (teach-in hand transmitters without on-site appointment)
- Describe replacement hand transmitter with an existing serial number (replace hand transmitter without on-site appointment)
- Read out and edit installed memory modules
- Read out hand transmitter serial numbers if they are no longer recognizable on the housing

Technical data

	Digital 720
Connection type	Pluggable
Interfaces	USB 2.0
Radio frequency	868 MHz
Radio technology	DM7S
Radio coding	Marantec
Dimensions (WxHxD) [mm]	105x175x55
Cable length [m]	1.9

Accessories for DM7S Programmers

Digital 721 - Virtual serial numbers



Digital 721

Memory module with 1,000 virtual serial numbers

For Digital 720 programmer

164986

147.00 €

Electrical Accessories





Main Switches



Programming Devices



Push button



Ceiling Pull Switches



Key Switches



Transponder Systems



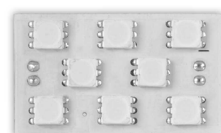
Timers



Traffic Lights



Signal lights



Opener Lightings



Garage Lightings



Electric Locks



Expansion Modules



Batteries

Main Switches



Article

Item no.	Description	Price
103240	Main switch in housing, 4-pole, 16 A, IP65	38.00 €

Scope of delivery

- Main switch

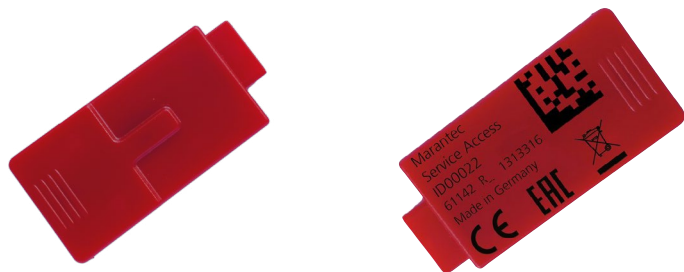
Features

- All-pole shutdown of the operator system

Technical data

	Main switch
Switching current (max.)[A]	16
Number of contacts	4-poles
Contact type	4 NC
Dimensions (WxHxD)[mm]	100x115x92

Programming Devices



Article

Item no.	Description	Price
122550	Marantec Service Access Stick for unlocking locked, safety-relevant programming menus of garage door openers	64.00 €

Area of use

For Comfort 260 (accu/speed), 270 (speed), 280, 360, 370, 380 and 390 (plus)

Scope of delivery

- Marantec Service Access

Features

- Enabling the programming menus level 2 (operator settings), level 3 (automatic closing), level 6 (variable speed) and level 8 (system settings)
- The stick is inserted into the radio receiver port for activation and pulled out again after programming is complete

Technical data

	Marantec Service Access
Connection type	Pluggable
Protection class	IP00
Dimensions (WxHxD)[mm]	23x7.7x48.4

Programming Devices



Article

Item no.	Description	Price
101159	Command 108 Hand programmer with illuminated LCD and 3 m cable, MS bus	60.00 €

Area of use

For Comfort 260 (accu/speed), 270 (speed), 280, 360, 370, 380 and 390 (plus). For Control x.52, x.82 and VTA

Scope of delivery

- Hand programmer with connection cable, 3.000 mm

Features

- Programming and operation from a convenient working position
- Display and modification of all parameters in quick and special programming on the illuminated LC display

Technical data

	Command 108
Display type	LCD
Display illumination	Yes
Connection type	Pluggable
Interfaces	MS bus (RJ14 connector)
Protection class	IP20
Dimensions (WxHxD) [mm]	48x88x14
Cable length [m]	3

Push button



Article

Item no.	Description	Price
103202	KDT 1-N Emergency impact mushroom, latching, surface installation, plastic housing, IP65	24.00 €

Scope of delivery

- Emergency stop push button

Features

- The red mushroom head with a latch on a yellow background meets the requirements for an emergency stop push button

Technical data

	KDT 1-N
Push button type	Emergency stop
Connection type	Conventional
Number of contacts	1
Contact type	1 NC
Installation area	Surface mount
Protection class	IP65
Dimensions (WxHxD)[mm]	80x80x80
Material	Plastic

Push button



Article

Item no.	Description	Price
100768	Command 107 Inside push button with light button and vacation function	16.00 €

Area of use

For Comfort 260 (accu/speed), 270 (speed), 280, 360, 370, 380 and 390

Scope of delivery

- Inside push button
- Connection cable, 9.000 mm
- Installation material

Features

- 1 illuminated key with IMPULSE function
- 1 key for switching the operator lighting ON/OFF
- 1 button for switching the vacation mode ON/OFF (deactivation of radio reception)
- The modular housing allows multiple identical devices to be plugged together

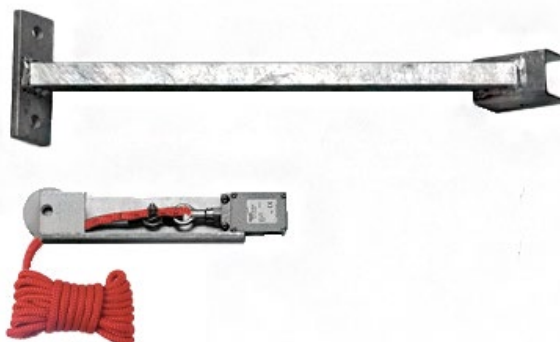
Technical data

	Command 107
Push button type	Push button
Connection type	Conventional
Number of contacts	1
Contact type	1 NO
Installation area	Surface mount
Protection class	IP00
Dimensions (WxHxD) [mm]	74x125x17
Cable length [m]	9
Material	Plastic

Ceiling Pull Switches



Ceiling pull switch



Ceiling pull switch

Article

Item no.	Description	Price
151050	Ceiling pull switch with slow action and 3.5 m pull rope	80.00 €
564275	Ceiling pull switch with slow action, 3.5 m hauling rope and 3 m cantilever arm	257.00 €

Scope of delivery

151050

- Ceiling pull switch with pull rope, 3.500 mm
- Wall bracket
- Installation material

564275

- Ceiling pull switch with pull rope, 3,500 mm
- Cantilever arm, 3.000 mm
- Cantilever support
- Installation material

Features

151050

- Operation by pulling the pull rope

564275

- Operation by pulling the pull rope
- Cantilever arm for wall or lintel installation at a distance from the gate

Technical data

	Ceiling pull switch
Rope diameter (max.) [mm]	15
Switching system	Snap action
Connection type	Conventional
Number of contacts	2
Contact type	1 NO + 1 NC
Contact load (max.)	400 V-AC/6 A
Protection class	IP65
Dimensions (WxHxD) [mm]	40x116x27

Key Switches



Article

Item no.	Description	Price
184191	US 1-2T/1 Key switch for flush installation, 2-sided momentary contact, metal housing, IP54, 3 keys	52.00 €

Scope of delivery

- Key switch with profile half cylinder (30/10 mm - 0°) and 3 keys
- Recessed box for 60 mm drill holes

Features

- 2 interchangeable contacts with push-button function (key left/right)
- Integrated flush-mounting box for flush-mounting installation in drilled holes with a diameter of 60 mm
- Large front panel to cover tearouts or plaster when installing in masonry
- Burglar resistant due to robust metal housing and access to the inside with the help of the key

Technical data

	US 1-2T/1
Material	Aluminum die casting; Aluminum
Switch function	2-sided scanning
Connection type	Conventional
Number of contacts	2
Contact type	2 NO
Installation area	Flush-mounted
Protection class	IP54
Dimensions (WxHxD) [mm]	90x100x55.5

Key Switches



Article

Item no.	Description	Price
184190	MSC-APZ 1-2T/1 Key switch for surface installation, 2-sided momentary contact, metal housing, IP54, 3 keys	54.00 €

Scope of delivery

- Key switch with profile half cylinder (30/10 mm - 0°) and 3 keys

Features

- 2 interchangeable contacts with push-button function (key left/right)
- Simple installation due to surface mounted installation
- Burglar resistant due to robust metal housing and access to the inside with the help of the key

Technical data

	MSC-APZ 1-2T/1
Material	Aluminum die casting; Aluminum
Switch function	2-sided scanning
Connection type	Conventional
Number of contacts	2
Contact type	2 NO
Installation area	Surface mount
Protection class	IP54
Dimensions (WxHxD)[mm]	74x76x48

Key Switches



Article

Item no.	Description	Price
184192	GSU-1100-MSC-APZ 1-2T/1 Key switch in aluminum pedestal, 2-sided momentary, metal housing, IP54, 3 keys	217.00 €

Scope of delivery

- Key switch in aluminum pedestal with profile half cylinder (30/10 mm - 0°) and 3 keys

Features

- 2 interchangeable contacts with push-button function (key left/right)
- Key switch integrated and protected in the stand column
- Modern stand column in anodized aluminum profile
- Burglar resistant due to robust metal housing and access to the inside with the help of the key

Technical data

	GSU-1100-MSC-APZ 1-2T/1
Material	Aluminum die casting; Aluminum
Switch function	2-sided scanning
Connection type	Conventional
Number of contacts	2
Contact type	2 NO
Protection class	IP54
Dimensions (WxHxD)[mm]	95.5x60x1,100

Transponder Systems



Article

Item no.	Description	Price
81076	Command 802 RFID transponder system with 30 memory locations, consisting of: Evaluation unit with reader module, IP54, 2 m cable and 3 transponder code cards	144.00 €

Scope of delivery

- Reader module with integrated evaluation unit and 2,000 mm connection cable
- 3 transponder code cards
- Installation material

Features

- Contactless operation by holding a transponder in front of it
- Memory for up to 30 transponders
- IMPULSE or ON/OFF function adjustable
- Targeted programming and deletion of individual transponders

Technical data

	Command 802
Operating voltage [V]	24 V-AC; 24 V-DC
Power consumption [VA/W/kW]	0.8 W
Inputs	1 potential-free push button input (NO)
Outputs	1 potential-free relay contact (CO)
Interfaces	EM4102
Protection class	IP54
Dimensions (WxHxD) [mm]	39x75x15

Transponder Systems



Command 812



Reading module

Article

Item no.	Description	Price
81077	Command 812 RFID transponder system with 2,000 memory locations, consisting of: evaluation unit, IP20, with external reader module, IP54, on 2 m cable, 3 transponder code cards	484.00 €
8054092	Reading module Additional reader module with 2 m cable for Command 812, IP54	158.00 €

Scope of delivery

81077

- Evaluation unit
- Reader module with 2,000 mm connection cable
- 3 transponder code cards
- Installation material

8054092

- Reader module with 2,000 mm connection cable
- Installation material

Features

- Contactless operation by holding a transponder in front of it
- Generous storage space for up to 2,000 transponders
- IMPULSE or ON/OFF function adjustable
- Usable for one or 2 doors (2nd reader module required). Anti-passback function adjustable
- Inputs for emergency opening and fire alarm
- Targeted blocking and deletion of individual transponders via keys and display in the absence of the transponders

Technical data

	Command 812
Operating voltage [V]	24 V-AC; 24 V-DC
Power consumption [VA/W/kW]	3.6 W
Inputs	2 potential-free push button inputs (NO) 1 potential-free alarm input (NC)
Outputs	2 potential-free relays (CO) 2 potential-free outputs (NO) for door monitoring
Interfaces	EM4102
Protection class	IP20
Dimensions (WxHxD) [mm]	100x150x26

Transponder Systems



RFID transponder code card



RFID Transponder Keychain

Article

Item no.	Description	Price
8009748	RFID transponder code card	10.00 €
8009749	RFID Transponder Keychain	14.00 €

Scope of delivery

8009748

- RFID transponder code card

8009749

- RFID Transponder Keychain

Features

8009748

- Compact size, fit for the card slot in the wallet

8009749

- Eyelet for attachment to keychain or lanyard

Technical data

	RFID transponder code card	RFID Transponder Keychain
Interfaces	EM4102	
Radio frequency	125 kHz	
Dimensions (WxHxD)[mm]	85x54x1	33x43x4

Timers



Weekly timer

Article

Item no.	Description	Price
163981	Weekly timer in housing 1-channel, Bluetooth, 230 V, IP65, in housing	275.00 €
161427	Weekly timer 1-channel, Bluetooth, 230 V, IP20, DIN rail installation	180.00 €

Features

- Programming of functions and diagnostics via an integrated LC display or simply via Bluetooth with the smartphone app or PC
- Daily, weekly and annual programs with 100 freely combinable switching commands
- Installation on a top-hat rail
- Weather resistant housing

Technical data

	Weekly timer in housing	Weekly timer
Display type	LCD	
Display illumination	Yes	
Connection type	Conventional	
Operating voltage [V]	230 V/1~	
Rated current [A]	0.001	
Number of contacts	1	
Contact type	1 CO	
Contact load (max.)	250 V-AC/10 A	
Interfaces	Bluetooth® 4.2	
Protection class	IP65	IP20
Dimensions (WxHxD)[mm]	196x150x124	
Width (pitch units)		2

24 V Traffic Lights



LED traffic light 24 V red



LED traffic light 24 V yellow



LED traffic light 24 V Green

Article

Item no.	Description	Price
148261	LED traffic light 24 V red with 7 m cable, 1.7 W, IP65	70.00 €
161163	LED traffic light 24 V red with 11 m cable, 1.7 W, IP65	76.00 €
148263	LED traffic light 24 V yellow with 7 m cable, 1.7 W, IP65	70.00 €
150770	LED traffic light 24 V yellow with 11 m cable, 1.7 W, IP65	76.00 €
148262	LED traffic light 24 V Green with 7 m cable, 1.7 W, IP65	70.00 €
150768	LED traffic light 24 V Green with 11 m cable, 1.7 W, IP65	76.00 €

Features

- Long-life and power-saving LED light source
- Installation and alignment using the enclosed wall bracket

Technical data

	148261	161163	148263	150770	148262	150768
Operating voltage [V]	24 V-DC					
Rated current [A]	0.07					
Power consumption [VA/W/ kW]	1.7 W					
Dimensions (WxHxD)[mm]	150x165x240					
Cable length [m]	7	11	7	11	7	11

24 V Traffic Lights



Article

Item no.	Description	Price
148414	LED traffic light 24 V red/green with 7 m cable, 3.2 W, IP65	136.00 €
148964	LED traffic light 24 V red/green with 11 m cable, 3.2 W, IP65	148.00 €

Features

- Long-life and power-saving LED light source
- Installation and alignment using the enclosed wall bracket

Technical data

	148414	148964
Operating voltage [V]	24 V-DC	
Rated current [A]	0.13	
Power consumption [VA/W/kW]	3.2	
Dimensions (WxHxD) [mm]	150x350x240	
Cable length [m]	7	11

230 V Traffic Lights



LED traffic light 230 V Red



LED traffic light 230 V Yellow



LED traffic light 230 V Green

Article

Item no.	Description	Price
104649	LED traffic light 230 V Red with bulb E14, without cable, 5,5 W, IP65	59.00 €
104651	LED traffic light 230 V Yellow with bulb E14, without cable, 5,5 W, IP65	59.00 €
104650	LED traffic light 230 V Green with bulb E14, without cable, 5,5 W, IP65	59.00 €

Features

104649

- Long-life and power-saving LED light source
- Installation and alignment using the enclosed wall bracket

104651

- Long-life and power-saving LED light source
- Installation and alignment using the enclosed wall bracket

104650

- Long-life and power-saving LED light source
- Installation and alignment using the enclosed wall bracket

Technical data

	104649	104651	104650
Operating voltage [V]	230 V/1~		
Rated current [A]	0.024		
Power consumption [VA/W/kW]	5.5		
Dimensions (WxHxD) [mm]	150x165x240		

Signal lights



Control 950



Control 950 with wall bracket

Article

Item no.	Description	Price
159260	Control 950 LED signal light 24 V, orange, without cable, 2.9 W, IP65	45.00 €
159261	Control 950 with wall bracket LED signal light 24 V, orange, without cable, 2.9 W, IP65, with wall bracket	53.00 €

Area of use

For all Marantec controls and third-party products. For the garage door openers (except Comfort 390 plus), the EP 161 extension board is additionally required. An external relay is additionally required for control CBX102B

Features

Control 950

- Flashing or lit (depending on the programming of the control)
- Long-life and power-saving LED light source

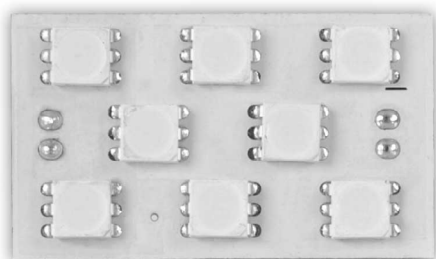
Control 950 with wall bracket

- Flashing or lit (depending on the programming of the control)
- Long-life and power-saving LED light source
- Mounting of a magnetic base antenna on the wall mount possible

Technical data

	159260	159261
Illuminant	8 LED module	
Operating voltage [V]	24 V-DC	
Rated current [A]	0.12	
Power consumption [VA/W/kW]	2.9	
Dimensions (WxHxD) [mm]	65x85x65	70x135x105

Opener Lightings



EL 200



EL 300

Article

Item no.	Description	Price
101160	EL 200 LED module for extending the LED lighting of Comfort 200 operators, 1 piece	10.00 €
101161	EL 300 LED modules for extending the LED lighting of Comfort 300 operators, 2 pcs	20.00 €

Scope of delivery

101160

- 8-LED module
- Connecting cable

101161

- 2 10 LED modules
- 2 connecting cables

Features

101160

- Doubling the light output of the opener lighting
- Pluggable cable connections simplify assembly

101161

- Doubling the light output of the opener lighting
- Pluggable cable connections simplify assembly

Technical data

	EL 200	EL 300
Illuminant	8 LED module	10 LED module
Luminous flux [lm]	224	280
Color temperature [K]	5,500	
Color	White	
Operating voltage [V]	24 V-DC	
Rated current [A]	0.12	
Power consumption [VA/W/kW]	2.9	
Protection class	IP00	
Dimensions (WxHxD) [mm]	37x11x22	255x9x13

Garage Lightings



Light 200



Light 201

Article

Item no.	Description	Price
177519	Light 200 LED lighting system for garages, consisting of 2 magnetic LED strips, each 1.5 m long, connection unit 230 V-AC with integrated motion/daylight sensor	160.00 €
177521	Light 201 LED lighting system for garages, consisting of 2 magnetic LED strips, each 1,5 m long, connection unit 230 V-AC with integrated radio receiver 868 MHz bi.linked	182.00 €

Features

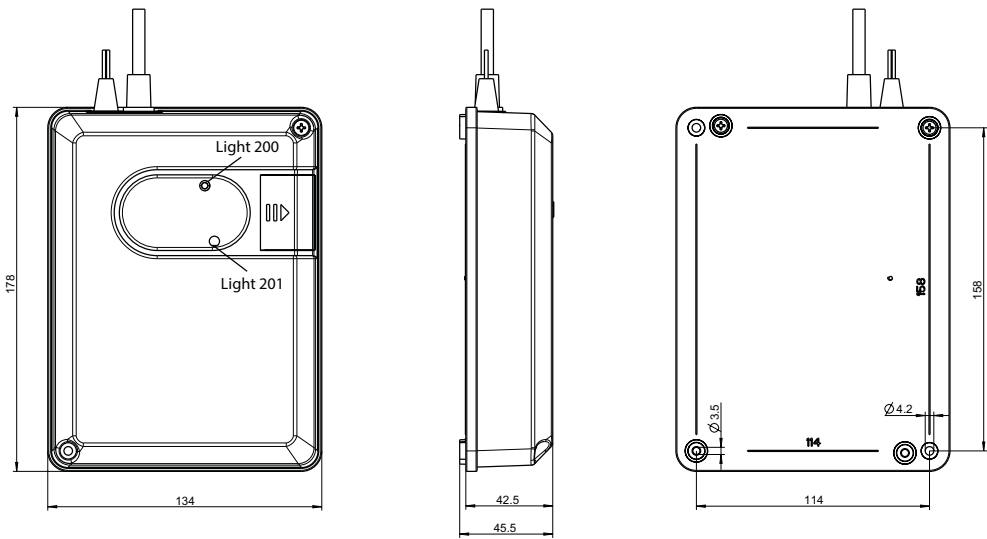
Light 200

- LED lighting system for additional light in the garage
- LED strip with integrated magnets for installation on the right and left door track
- Pluggable cable connections simplify assembly
- Junction box with integrated motion sensor
- If the motion sensor detects a movement, the light is switched on for an adjustable period of time
- Adjustable daylight sensor prevents the light from being switched on even during the day

Light 201

- LED lighting system for additional light in the garage
- LED strip with integrated magnets for installation on the right and left door track
- Pluggable cable connections simplify assembly
- Connection box with integrated radio receiver
- Previously unused hand transmitter or wall transmitter buttons can be programmed into the radio receiver to switch the light on and off

Technical drawings



Technical data

	Light 200	Light 201
Illuminant	LED	
Luminous flux [lm]	4,400	
Color temperature [K]	4,000	
Color	RAL 9003	
Operating voltage [V]	230 V/1~	
Power consumption [VA/W/kW]	21.5	
Sensoren	Radar	
Radio frequency		868 MHz
Radio technology		bi.linked
Radio coding		Marantec
Number of memory locations		100
Protection class	IP20	
Dimensions (WxHxD)[mm]	134x178x46	

Specific accessories



Extension set

4 m extension cable for LED lighting system, 2 pieces

184092

10.00 €

Electric Locks



Article

Item no.	Description	Price
160432	Lock 720 Electric lock for sectional doors, installation on the running rail	116.00 €

Area of use

For Comfort 260 (speed), 270 (speed), 280, 360, 370, 380 and 390 (plus)

Scope of delivery

- Electric lock with emergency release
- Expansion circuit board EP 163
- Board holder
- Connection cable, 10.000 mm
- Installation material

Features

- Electric lock for additional security of a closed sectional door
- A pin blocks the movement of the gate to prevent it from sliding open. As soon as the operator starts, the pin is retracted and held for the duration of the travel
- The „power to unlock“ principle saves energy, as the electric lock is only supplied with power during gate travel. Furthermore, the gate is still additionally secured even during a power failure
- A mechanical release enables the unlocking of the bolt

Technical data

	Lock 720
Connection type	Pluggable
Operating voltage [V]	24 V-DC
Rated current [A]	1.2
Power consumption [VA/W/kW]	29
Protection class	IP20
Dimensions (WxHxD)[mm]	28x205x65

Expansion Modules



Adapter board without housing



Adapter board in IP55 housing



Adapter board in IP66 housing

Article

Item no.	Description	Price
8055526	Adapter board in IP55 housing System wiring/conventional, in housing, IP55	25.00 €
123522	Adapter board in IP66 housing System wiring/conventional, in housing, IP66	41.00 €
61556	Adapter board without housing System wiring/conventional, without housing	21.00 €

Features

Adapter board in IP55 housing

- Transition from conventional cabling to system cabling and vice versa
- Weather resistant housing

Adapter board in IP66 housing

- Transition from conventional cabling to system cabling and vice versa
- Weather resistant housing

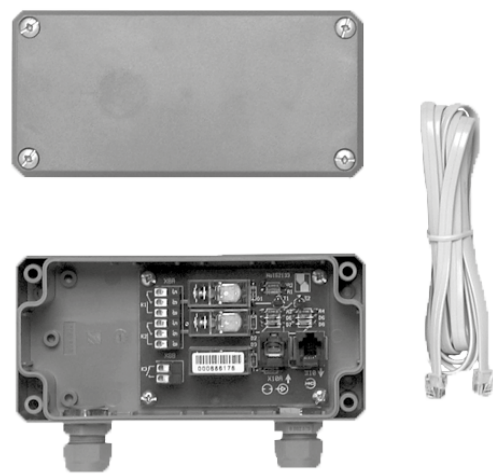
Adapter board without housing

- Transition from conventional cabling to system cabling and vice versa

Technical data

	Adapter board in IP55 housing	Adapter board in IP66 housing	Adapter board without housing
Connection type	Pluggable		
Interfaces	System cabling (RJ11 connector)		
Protection class	IP55	IP66	IP00
Dimensions (WxHxD)[mm]	85x85x37	94x65x57	68x36x22

Expansion Modules



Article

Item no.	Description	Price
85236	Relay retrofit kit Extension circuit board with 3 relays for OPEN/CLOSE/Light, system wiring, in IP65 housing	127.00 €

Area of use

For Comfort 260 (speed), 270 (speed), 280, 360, 370, 380 and 390. Can only be used in conjunction with EP 141 expansion circuit board

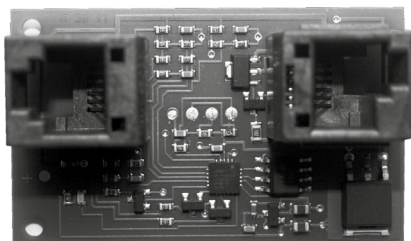
Features

- 3 potential-free relay contacts for end position signals OPEN, CLOSED and external lighting
- 1 input for Marantec control elements with system wiring

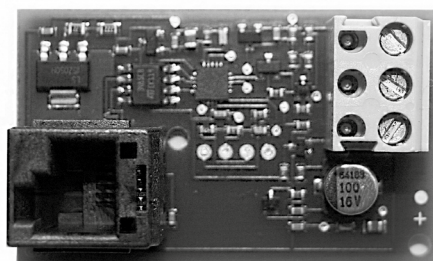
Technical data

	Relay retrofit kit
Connection type	Pluggable
Operating voltage [V]	24 V-DC
Inputs	1 input for control elements with system wiring
Outputs	2 potential-free relay contacts for end position messages (C0) 1 potential-free relay contact for lighting (N0)
Contact type	2 C0 + 1 N0
Contact load (max.)	250 V/60 W
Interfaces	System cabling (RJ11 connector)
Protection class	IP65
Dimensions (WxHxD)[mm]	200x60x120

Expansion Modules



EP 141



EP 143

Article

Item no.	Description	Price
100750	EP 141 Extension board with connection for push button with system wiring, MS bus, with 0.2 m MS bus cable and holder for garage door openers	27.00 €
100751	EP 143 Expansion board with connection for opto-sensors/contact strip 8.2 kOhm, MS bus, with 0.2 m MS bus cable and holder for garage door openers	35.00 €

Area of use

100750

For Comfort 260 (speed), 270 (speed), 280, 360, 370, 380 and 390 (plus). For Control x.52 and x.82

100751

For Comfort 260 (speed), 270 (speed), 280, 360, 370, 380 and 390

Features

100750

- 1 input for Marantec control elements with system wiring
- Compact size enables accommodation in the operator housing

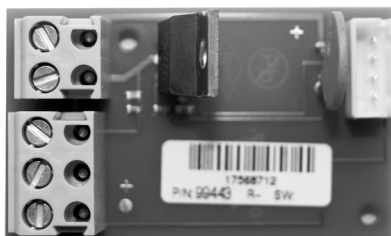
100751

- 1 programmable input with resistance and OSE signal processing for 8.2 kOhm contact strips or OSE opto-sensors (12 V-DC/max. 0.05 A)
- Compact size enables accommodation in the operator housing

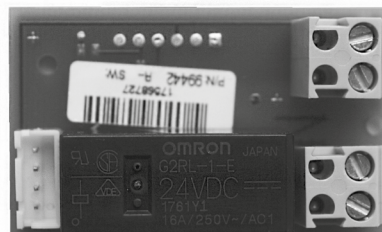
Technical data

	EP 141	EP 143
Connection type	Pluggable	
Operating voltage [V]	24 V-DC	
Inputs	1 input for accessories with system cabling	1 programmable input with resistance and OSE signal processing for 8.2 kOhm contact strips or OSE opto-sensors (12 V-DC/max. 0.05 A)
Interfaces	MS bus (RJ14 connector); System cabling (RJ11 connector)	MS bus (RJ14 connector); OSE
Protection class	IP00	
Dimensions (WxHxD) [mm]	30x50x20	

Expansion Modules



EP 161



EP 163

Article

Item no.	Description	Price
100752	EP 161 Expansion board with one programmable input and one output 24 V-DC 0.2 A for LED signal lights, with 0.2 m cable and holder for garage door openers	25.00 €
100753	EP 163 Expansion board with one programmable input and one programmable relay 48 V-AC/DC, with 0.2 m MS bus cable and holder for garage door openers	25.00 €

Area of use

For Comfort 260 (speed), 270 (speed), 280, 360, 370, 380 and 390

Features

100752

- 1 programmable potential-containing output for signal lights (24 V-DC/max. 0.2 A)
- 1 potential-loaded output (24 V-DC/max. 0.05 A)
- 1 programmable input for control elements with conventional wiring (NO)
- Compact size enables accommodation in the operator housing

100753

- 1 programmable potential-free relay contact
- 1 programmable input for control elements with conventional wiring (NO)
- Compact size enables accommodation in the operator housing

Technical data

	EP 161	EP 163
Connection type	Pluggable	
Operating voltage [V]	24 V-DC	
Inputs	1 programmable input for control elements with conventional wiring (NO)	
Outputs	1 programmable potential-loaded output for signal lights (24 V-DC/max. 0.2 A) 1 potential-loaded output (24 V-DC/max. 0.05 A)	1 programmable potential-free relay contact (max. 48 V-AC/DC)
Contact type	1 NO	2 NO
Contact load (max.)		48 V AC/DC
Interfaces	MS bus (4-pin connector)	
Protection class	IP00	
Dimensions (WxHxD) [mm]	30x50x20	

Expansion Modules



Article

Item no.	Description	Price
88386	EM 131 MS-Bus expansion module with 4 inputs and 4 outputs and lane control, DIN rail including, with 0.2 m MS-Bus cable	182.00 €

Area of use

For Comfort 260 (speed), 270 (speed), 280, 360, 370, 380, 390 (plus), Control x.52, x.82 and VTA

Features

- Integrated lane control for two-way traffic operation
- 4 programmable potential-free inputs for push buttons (NO)
- 4 programmable potential-free relay contacts for 2 traffic lights red/green or additional signal devices (changeover contacts)
- Status and diagnostic messages via LED
- Installation on a top-hat rail

Technical data

	EM 131
Connection type	Pluggable
Operating voltage [V]	24 V-DC
Inputs	4 programmable potential-free inputs for pushbuttons (NO)
Outputs	2 programmable potential-free relay contacts for 2 traffic lights red/green (CO) 2 programmable potential-free relay contacts for additional signal devices (CO)
Contact type	4 CO
Contact load (max.)	230 V/6 A
Interfaces	MS bus (RJ14 connector)
Protection class	IP00
Dimensions (WxHxD) [mm]	84x126x48
Width (pitch units)	5

Expansion Modules



Article

Item no.	Description	Price
96658	EM 171 MS-Bus extension module with 2 programmable relays, DIN rail installation, with 0.14 m MS-Bus cable	128.00 €

Area of use

For Comfort 260 (speed), 270 (speed), 280, 360, 370, 380, 390 (plus), Control x.52, x.82 and VTA

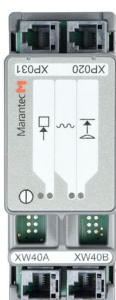
Features

- 2 programmable potential-free relay outputs (changeover contacts)
- Status and diagnostic messages via LED
- Installation on a top-hat rail

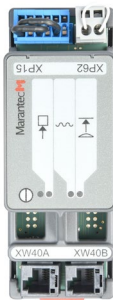
Technical data

	EM 171
Connection type	Pluggable
Operating voltage [V]	24 V-DC
Outputs	2 programmable potential-free relay outputs (CO)
Contact type	2 CO
Contact load (max.)	230 V/6 A
Interfaces	MS bus (RJ14 connector)
Protection class	IP00
Dimensions (WxHxD) [mm]	45x126x48
Width (pitch units)	2.5

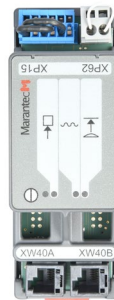
Expansion Modules



EM 181



EM 182



EM 183

Article

Item no.	Description	Price
90588	EM 181 MS-Bus extension module with connection for light barrier and opto-sensors Opto 100 with system cabling, top hat rail installation, with 0.14 m MS-Bus cable	93.00 €
96659	EM 182 MS bus extension module with connection for 2-wire photoelectric sensor and opto-sensors Opto 300 or contact strip 8.2 kOhm, active in CLOSE direction, DIN rail installation, with 0.14 m MS bus cable	93.00 €
88370	EM 183 MS bus extension module with connection for 2-wire photoelectric sensor and opto-sensors Opto 300 or contact strip 8.2 kOhm, active in OPEN direction, DIN rail installation, with 0.14 m MS bus cable	93.00 €

Area of use

For Comfort 260 (speed), 270 (speed), 280, 360, 370, 380, 390 (plus) and VTA

Features

EM 181

- 1 programmable input for light barriers with system wiring
- 1 programmable input for OPTO 100 opto-sensors with system wiring
- Status and diagnostic messages via LED
- Installation on a top-hat rail

EM 182

- 1 programmable input for light barriers with 2-wire cable
- 1 programmable input with resistance and OSE signal processing for 8.2 kOhm contact strips or OSE opto-sensors (12 V-DC/ max. 0.05 A)
- Status and diagnostic messages via LED
- Installation on a top-hat rail

EM 183

- 1 programmable input for light barriers with 2-wire cable
- 1 programmable input with resistance and OSE signal processing for 8.2 kOhm contact strips or OSE opto-sensors (12 V-DC/ max. 0.05 A) in OPEN direction
- Status and diagnostic messages via LED
- Installation on a top-hat rail

Technical data

Product name short	EM 181	EM 182	EM 183	
Connection type	Pluggable			
Operating voltage [V]	24 V-DC			
Interfaces	MS bus (RJ14 connector)	MS bus (RJ14 connector); 2-wire; OSE		
Protection class	IP00			
Dimensions (WxHxD) [mm]	45x126x48			
Width (pitch units)	2.5			

Expansion Modules



EM 184



EM 184 in CS mini Housing

Article

Item no.	Description	Price
105733	EM 184 MS bus extension module with connection for 2 pull-in safety devices OSE/ PNP/relay, DIN rail including, with 0.2 m MS bus cable	108.00 €
121723	EM 184 in CS mini Housing MS bus extension module with connection for 2 pull-in safety devices OSE/ PNP/relay, in CS mini housing, with 3 m MS bus cable	191.00 €

Area of use

For Comfort 260 (speed), 270 (speed), 280, 360, 370, 380, 390 (plus), VTA, CS 255 and CS 320

Features

- 2 programmable inputs with testing for pull-in fuses with OSE/PNP/relay connection (24-30 V-DC/ max. 0.2 A)
- Automatic detection of the connected system
- Activation in OPEN or CLOSE direction selectable
- Supply voltage of the pull-in safety fuse selectable device (12/24 V-DC)
- Status and diagnostic messages via LED
- Installation on a top-hat rail

EM 184 in CS mini Housing

- 2 programmable inputs with testing for pull-in fuses with OSE/PNP/relay connection (24-30 V-DC/ max. 0.2 A)
- Automatic detection of the connected system
- Activation in OPEN or CLOSE direction selectable
- Supply voltage of the pull-in safety fuse selectable device (12/24 V-DC)
- Status and diagnostic messages via LED
- Installation on a top-hat rail
- Weather resistant housing

Technical data

	EM 184	EM 184 in CS mini Housing
Connection type	Pluggable	
Operating voltage [V]	24 V-DC	
Inputs	2 programmable inputs for pull-in fuses with OSE/PNP/relay connection (24-30 V-DC/max. 0.2 A)	
Interfaces	MS bus (RJ14 connector); MS bus (4-pin connector); OSE; PNP	
Protection class	IP00	IP65
Dimensions (WxHxD) [mm]	45x126x48	165x220x105
Width (pitch units)	2.5	

Expansion Modules



EM 185



EM 185 in CS mini housing

Article

Item no.	Description	Price
183737	EM 185 MS bus extension module with connection for one light grid OSE, top-hat rail installation, with 0.2 m MS bus cable	93.00 €
184081	EM 185 in CS mini housing MS bus extension module with connection for one light grid OSE, in CS mini housing, with 9.5 m MS bus cable	197.00 €

Area of use

For Comfort 260 (speed), 270 (speed), 280, 360, 370, 380, 390 (plus) and VTA

Features

- One programmable input with OSE signal processing and function logic for OSE light curtain (12/24 V-DC/max. 0.6 W)
- Connection of a 2nd OSE light grid using a 2nd EM module. Both modules can be accommodated in a CS mini housing and operated in series connection to the control
- Status and diagnostic messages via LED
- Installation on a top-hat rail

EM 185 in CS mini housing

- One programmable input with OSE signal processing and function logic for OSE light curtain (12/24 V-DC/max. 0.6 W)
- Connection of a 2nd OSE light grid using a 2nd EM module. Both modules can be accommodated in a CS mini housing and operated in series connection to the control
- Status and diagnostic messages via LED
- Installation on a top-hat rail
- Weather resistant housing

Technical data

	EM 185	EM 185 in CS mini housing
Connection type	Pluggable	
Operating voltage [V]	24 V-DC	
Inputs	1 programmable input for light barriers with 2-wire cabling 1 programmable input with OSE signal processing and function logic for OSE light curtains (12/24 V-DC/max. 0.6 W)	
Interfaces	MS bus (RJ14 connector); 2-wire; OSE	
Protection class	IP00	IP65
Dimensions (WxHxD) [mm]	45x126x48	165x220x105
Width (pitch units)	2.5	

Power Supplies for Expansion Modules



Article

Item no.	Description	Price
184827	Power supply 24 V-DC/2.5 A 2 outputs, top hat rail installation	60.00 €
184828	Power supply 24 V-DC/2.5 A in CS mini housing 2 outputs, in CS mini housing, IP65, with 1.5 m cable and Schuko plug	93.00 €

Features

Power supply 24 V-DC/2.5 A

- Wide universal input voltage range
- Adjustable output voltage
- Connections protected against accidental contact
- Can be installed on DIN rail TS-35/7.5 or TS-35/15

Power supply 24 V-DC/2.5 A in CS mini housing

- Wide universal input voltage range
- Adjustable output voltage
- Connections protected against accidental contact
- Weather resistant housing

Technical data

	Power supply 24 V-DC/2.5 A	Power supply 24 V-DC/2.5 A in CS mini housing
Connection type	Conventional	
Power consumption [VA/W/kW]	66.7 W	
Inputs	1	
Outputs	2	
Protection class	IP00	IP65
Dimensions (WxHxD)[mm]	52.5x90x54.5	165x220x105
Width (pitch units)	3	

Accessories for Expansion Modules

System connector 6-pin



System connector

6-pole, 50 pieces

For Marantec system wiring

564186
32.00 €

System connector 4-pole



System connector

4-pole, 50 pieces

For Marantec system wiring

152921
28.00 €



System connector MS bus

4-pole, 50 pieces

For MS bus

96186
35.00 €

System cable 6-pin



System cable

6-pole, 50 m

For Marantec system wiring

61202
54.00 €

System cable 4-pole



System cable

4-pole, 50 m

For Marantec system wiring and
MS-Bus

8050843
46.00 €

Crimping Pliers



Crimp tool

for connectors for system cabling
and MS bus

For Marantec system wiring and
MS-Bus

96185
124.00 €

Batteries



Back-up 100



Back-up 700

Article

Item no.	Description	Price
101312	Back-up 100 Battery backup, 1.2 Ah, as plug-in unit for Comfort 300 operators	144.00 €
87786	Back-up 700 Battery backup, 7.2 Ah, in IP20 housing	291.00 €

Area of use

Back-up 100

For Comfort 360, 370, 380 and 390 (plus)

Back-up 700

For Comfort 260 (speed), 270 (speed), 280, 360, 370, 380, 390 (plus), Control x.52 and x.82

Features

Back-up 100

- Compact size enables accommodation in the operator housing
- Signaling of charging status and errors via LED
- Max. 8 cycles service life within 24 hours at an ambient temperature of +20 °C in conjunction with an opener in blueline mode

Back-up 700

- Signaling of charging status and errors via LED
- Max. 70 cycles service life within 7 days at an ambient temperature of +20 °C in conjunction with an opener in blueline mode
- Max. 30 cycles period of use within 3 days at an ambient temperature of +20 °C in conjunction with an operator or a control system with power-saving mode

Technical data

	Back-up 100	Back-up 700
Connection type	Pluggable	
Operating voltage [V]	24 V-DC	
Battery capacity [Ah]	1.2	7.2
Inputs	1 common entrance and exit for loading and supply	
Outputs	1 common entrance and exit for loading and supply	
Protection class	IP20	
Dimensions (WxHxD) [mm]	70x80x250	230x280x80

Batteries



Article

Item no.	Description	Price
87785	Accu 700 Battery unit 7.2 Ah as exchangeable battery in IP20 housing	291.00 €

Area of use

For Comfort 260 accu

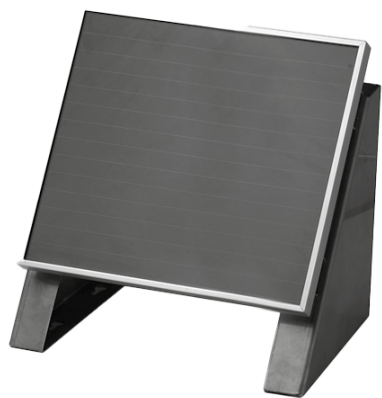
Features

- Convenient replacement of a discharged battery without prolonged interruption of the power supply
- Signaling of charging status and errors via LED

Technical data

	Accu 700
Connection type	Pluggable
Operating voltage [V]	24 V-DC
Battery capacity [Ah]	7.2
Inputs	1 input for charging the battery
Outputs	1 output for supplying the operator system
Protection class	IP20
Dimensions (WxHxD) [mm]	280x230x80

Batteries



Article

Item no.	Description	Price
83252	Retrofit kit solar panel with installation brackets and 7.5 m cable for Accu 700	332.00 €

Area of use

For Accu 700

Features

- Charging the battery unit by using the sunlight
- Charge amount dependent on e.g. orientation, degree of cloud cover, etc.
- Tested quality according to IEC 61646 (e.g. hailstones max. 25 mm and 83 km/h)

Technical data

	Retrofit kit solar panel
Connection type	Pluggable
Operating voltage [V]	36 V-DC
Charging current (max.) [A]	0.55
Outputs	1 output for supplying the operator system
Protection class	IP65
Dimensions (WxHxD) [mm]	430x400x80

Mechanical Accessories



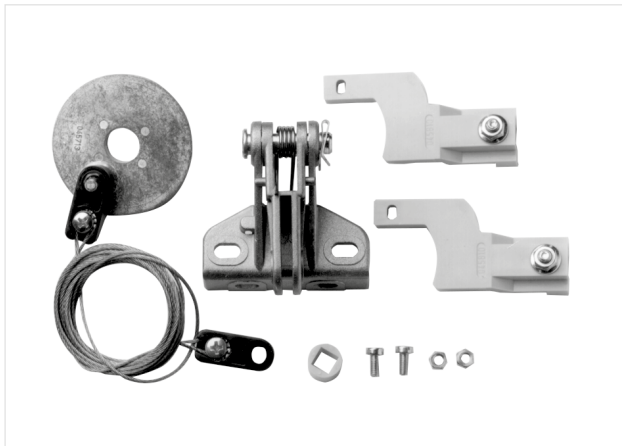


Interlocks

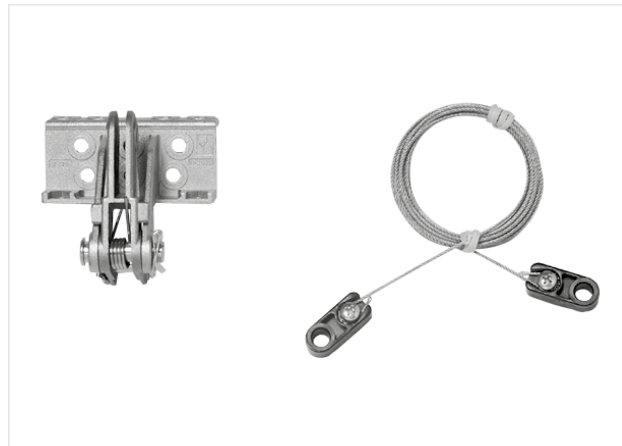


Emergency Operations

Interlocks



Special 201



Special 202

Article

Item no.	Description	Price
564458	Special 201 Release device for up-and-over doors with lateral door locking device	41.00 €
564459	Special 202 Release for gates with central bottom lock	42.00 €

Area of use

Special 201

For opener rails SZ. For retractable up-and-over doors with side door locking device

Special 202

For opener rails SZ. For gates with central floor locking

Features

Special 201

- Unlocks the gate locking linkage before startup

Special 202

- Via an angle lever the bottom latch of the gate is lifted before the start

Emergency Operations



Special 301



Special 302

Article

Item no.	Description	Price
182019	Special 301 Emergency release for retractable up-and-over doors, 3 m Bowden cable for door inner handles	46.00 €
182020	Special 302 Emergency release for Hörmann sectional doors, 4.5 m Bowden cable for door inner handles	45.00 €

Area of use

Special 301 For opener rails SZ. For retractable up-and-over doors with inside handle	Special 302 For opener rails SZ. For Hörmann sectional doors with inside handle
---	---

Features

Special 301 <ul style="list-style-type: none">After unlocking, the operator carriage is mechanically unlocked via the outer door handle with a Bowden cable, e.g. in the event of a power failure	Special 302 <ul style="list-style-type: none">After unlocking, the operator carriage is mechanically unlocked via the outer door handle with a Bowden cable, e.g. in the event of a power failure
--	--

Technical data

	Special 301	Special 302
Installation type	Screw on	
Bowden cable length [m]	3	4.5

Emergency Operations



Article

Item no.	Description	Price
182021	Special 304 Emergency release for hinged and sectional doors, 26 mm safety cylinder lock with 3 keys and 0.7 m Bowden cable	46.00 €
182022	Special 304 Emergency release for hinged and sectional doors, 26 mm safety cylinder lock with 3 keys and 1.7 m Bowden cable	52.00 €
182023	Special 304 Emergency release for hinged and sectional doors, 26 mm safety cylinder lock with 3 keys and 2.5 m Bowden cable	55.00 €

Area of use

For opener rails SZ and swing gate operators Comfort 515 (L) and 516 (L). For sectional doors, side sectional doors and swing gates

Features

- The mortise lock is retrofitted in the door and connected to the release of the operator system via the Bowden cable
- Pulling out the cylinder mechanically unlocks the operator system, e.g. in the event of a power failure
- Cylinder lock with safety cylinder

Technical data

	Special 304		
Installation type	Screw on		
Installation area	Gate		
Material	Steel (galvanized)		
Dimensions (WxHxD) [mm]	36x63x47		
Bowden cable length [m]	0.7	1.7	2.5

Emergency Operations



Article

Item no.	Description	Price
182026	Special 305 Emergency release for hinged and sectional doors, 13 mm cylinder lock with 3 keys and 0.7 m Bowden cable	34.00 €
182027	Special 305 Emergency release for hinged and sectional doors, 13 mm cylinder lock with 3 keys and 1.7 m Bowden cable	40.00 €
182028	Special 305 Emergency release for hinged and sectional doors, 13 mm cylinder lock with 3 keys and 2.5 m Bowden cable	46.00 €

Area of use

For opener rails SZ and swing gate operators Comfort 515 (L) and 516 (L). For sectional doors, side sectional doors and swing gates

Features

- The mortise lock is retrofitted in the door and connected to the release of the operator system via the Bowden cable
- Pulling out the cylinder mechanically unlocks the operator system, e.g. in the event of a power failure
- Cylinder lock with standard cylinder

Technical data

	Special 305		
Installation type	Screw on		
Installation area	Gate		
Material	Steel (galvanized)		
Dimensions (WxHxD) [mm]	20x20x56		
Bowden cable length [m]	0.7	1.7	2.5

Emergency Operations



Article

Item no.	Description	Price
158955	Special 306 Emergency release for sectional doors, 13 mm cylinder lock with 3 keys and 1.5 m pull cable	27.00 €

Area of use

For opener rails SZ. For sectional doors and side sectional doors

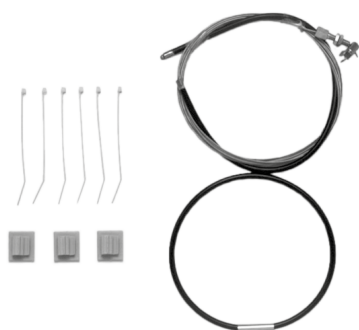
Features

- The mortise lock is retrofitted in the door and connected to the release of the operator system via the pull cable
- Pulling out the cylinder mechanically unlocks the operator system, e.g. in the event of a power failure
- Cylinder lock with standard cylinder

Technical data

	Special 306
Installation type	Screw on
Installation area	Gate
Material	Steel (galvanized)
Dimensions (WxHxD) [mm]	20x20x56
Rope length [m]	1.5

Emergency Operations



Special 311



Special 312

Article

Item no.	Description	Price
182024	Special 311 Emergency release for retractable up-and-over doors, 3.05 m Bowden cable for door inner handles	25.00 €
182025	Special 312 Emergency release for Novoferm sectional doors, 4.5 m Bowden cable for door inner handles	45.00 €

Area of use

Special 311

For opener rails SZ. For retractable up-and-over doors with inside handle

Special 312

For opener rails SZ. For Novoferm sectional doors with inside handle

Features

Special 311

- After unlocking, the operator carriage is mechanically unlocked via the outer door handle with a Bowden cable, e.g. in the event of a power failure

Special 312

- After unlocking, the operator carriage is mechanically unlocked via the outer door handle with a Bowden cable, e.g. in the event of a power failure

Technical data

	Special 311	Special 312
Installation type	Screw on	
Bowden cable length [m]	3.05	4.05

Marantec UK

A Division of Link Controls
Stuart Road, Manor Park
WA7 1TS Runcorn, Cheshire
Great Britain

Phone + 44 1928 579050
Fax + 44 1928 579259

info@marantec.co.uk
www.linkcontrols.co.uk

Marantec worldwide

Marantec Marienfeld GmbH & Co. KG | Marantec Legden

Find your local contact:
www.marantec.com/en/company/marantec-contact

E-mail: sales@marantec.com

